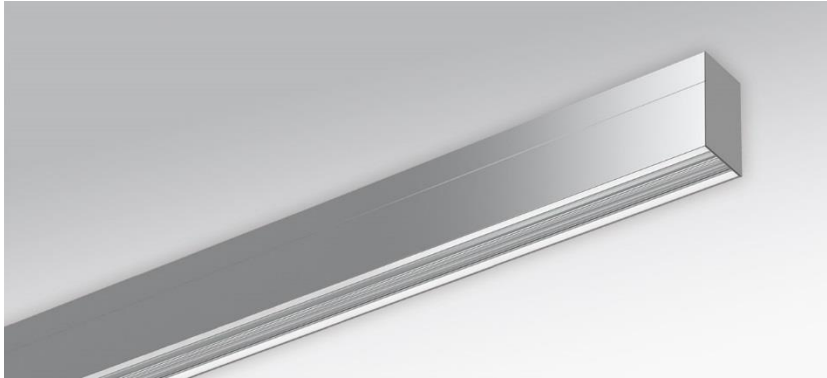
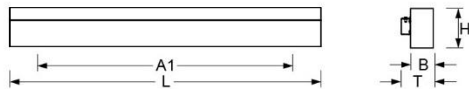


Wall luminaire. Aluminium profile, naturally anodised. Sheet steel end faces, painted in white aluminium. Housing colour natural anodised aluminium. Direct/indirect distribution. Direct asymmetric light distribution via Fresnel lenses made from acrylic. Indirect share via white-opal, satin-finished acrylic profile. Electrical connection via three-pole connection terminal with plug-in contacts; with integrated protective earth conductor connection and release button, suitable for rigid and flexible conductors up to 2.5mm².



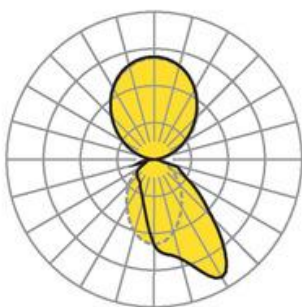
- Article No.: 4433144180
- Housing material: Aluminium
- Housing colour: natural anodised aluminium
- Light distribution: direct asymmetric distribution/ indirect symmetric distribution
- Type of installation: Wall mounting
- Certification mark: IP 20, Protection class I, F, Indoor, CE

Dimensions



- Dimensions LxWxH/DxH: 847 x 61 x 106 (mm)
- Depth: 86 (mm)
- Mounting distance A1: 610 (mm)
- Weight (net): 4.15 (kg)

Lighting/Electrical



- Placement: LED, Colour rendering/Light colour CRI ≥ 80 / 4000K
- Direct/Indirect: 45 % / 55 %
- Luminaire luminous flux: 4700 (lm)
- LED service life: 50000h L80/B10 (Tq 25°C)
- Luminaire luminous efficacy: 116 (lm/W)
- System output: 40 (W)
- Controller: Electronic driver (1 pcs.)
- Mains voltage max.: 230 V / 50 Hz
- Energy efficiency class: C