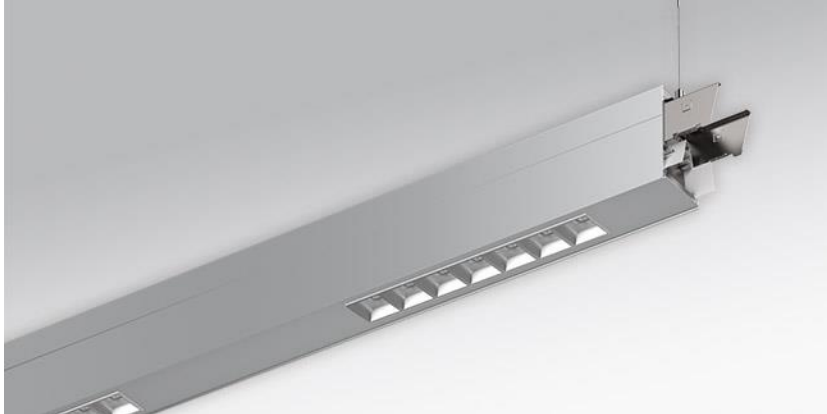
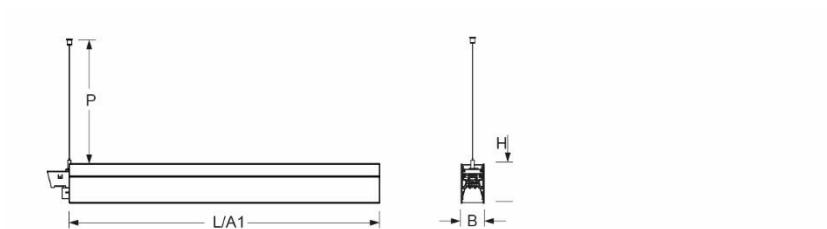


Pendant system luminaire. Aluminium profile incl. LED-unit for direct/ indirect share, powder coated. Housing colour natural anodised aluminum. Direct/indirect distribution. Constant indirect share via white-opal, satin-finished acrylic diffuser throughout all system components. Direct share via micro-cell grid. For VDU workstations $65^\circ < 1000\text{cd/m}^2$, $\text{UGR} \leq 19$ according to DIN EN 12464-1. Feed-in and through wiring plug-in system 10A. For system profile serio-HITOS LB one wire suspension is in scope of delivery. Available accessories: face-ends with wire suspension incl. connection cord and canopy set serio-HITE LED A/E Set 3x0,75 (5430137105); connection cord serio-AL 3x0,75 (5430037105).



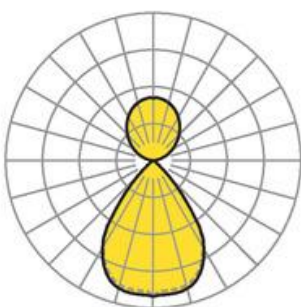
- Article No.: 5474044175
- Housing material: Aluminium
- Housing colour: natural anodised aluminum
- Light distribution: direct/indirect distribution
- Type of installation: Pendant light strip mounting
- Certification mark: IP 20, Protection class I, VDU $65^\circ < 1000$, F, Indoor, CE

Dimensions



- Dimensions LxWxH/DxH: 1125 x 61 x 106 (mm)
- Pendant length min/max: 150 / 2000 (mm)
- Mounting distance A1: 1125 (mm)
- Weight (net): 4.8 (kg)

Lighting/Electrical



- Placement: LED, Colour rendering/Light colour CRI ≥ 80 / 4000K
- Direct/Indirect: 54 % / 46 %
- UGR lat/lon: 12.0 / 11.9
- Luminaire luminous flux: 2600 (lm)
- LED service life: 50000h L80/B10 (Tq 25°C)
- Luminaire luminous efficacy: 145 (lm/W)
- System output: 18 (W)
- Controller: Electronic driver (2 pcs.)
- Mains voltage max.: 230 V / 50 Hz
- Driver/Breaker: 23 pieces/B10
36 pieces/B16|35 pieces/C10|60 pieces/C16
- Energy efficiency class: C