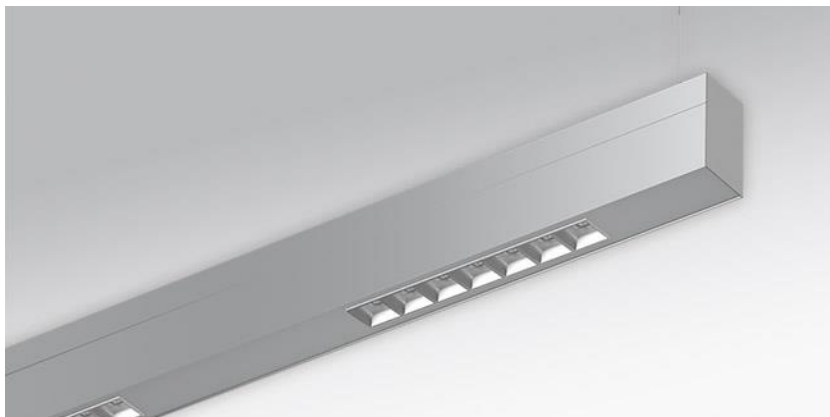


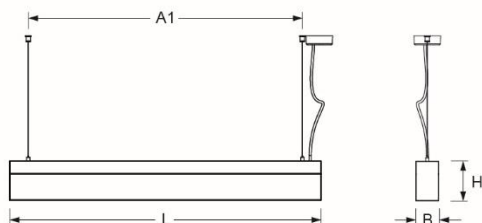
Pendant luminaire. Aluminium profile, naturally anodised. Face ends sheet steel, painted white aluminium. Housing colour aluminium, naturally anodised. Direct/indirect distribution, separately dimmable. Indirect share via white-opal, satin-finished acrylic diffusor. Direct share via micro-cell grid. For VDU workstations  $65^\circ < 3000\text{cd/m}^2$ ,  $\text{UGR} \leq 19$  according to DIN EN 12464-1. Electrical connection via five-pole feed-in and connection terminal with plug-in technology, with integrated protective earth connection and unlocking button, suitable for rigid and flexible cables up to 2,5mm<sup>2</sup>. Single wire suspension with quick-adjust coupling, free height adjustment between 150 and 2000mm.



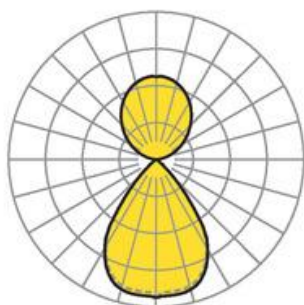
- Article No.: 5478146600
- Housing material: Aluminium
- Housing colour: aluminium, naturally anodised
- Light distribution: direct/indirect distribution
- Type of installation: Pendant individual mounting
- Certification mark: IP 20, Protection class I, VDU  $65^\circ < 1000$ , F, Indoor, CE

## Dimensions

- Dimensions LxWxH/DxH: 2247 x 61 x 106 (mm)
- Pendant length min/max: 150 / 2000 (mm)
- Mounting distance A1: 2145 (mm)
- Weight (net): 8.4 (kg)



## Lighting/Electrical



- Placement: LED, Colour rendering/Light colour CRI  $\geq 80$  / 4000K
- Direct/Indirect: 48 % / 52 %
- UGR lat/lon: 12.2 / 12.1
- Luminaire luminous flux: 8400 (lm)
- LED service life: 050000h L80/B10
- Luminaire luminous efficacy: 133 (lm/W)
- System output: 63 (W)
- Controller: Electronic driver DALI (2 pcs.)
- Mains voltage max.: 230 V / 50 Hz
- Energy efficiency class: C