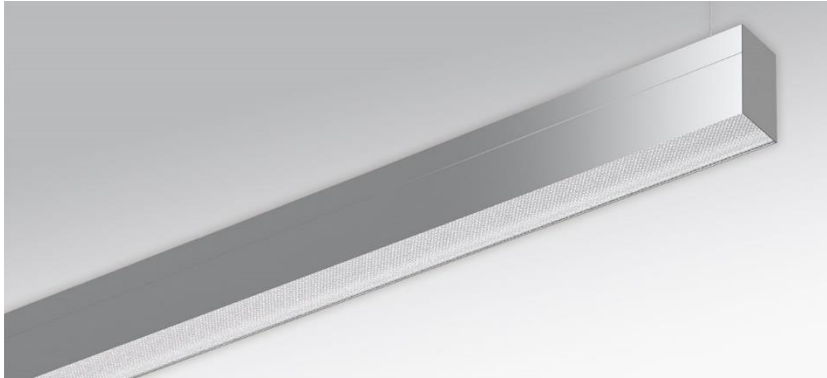
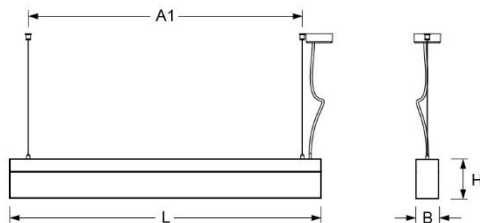


Pendant luminaire. Aluminium profile, naturally anodised. Face ends sheet steel, painted white aluminium. Housing colour aluminium, naturally anodised. Direct/indirect distribution. Direct distribution via microprismatic panel with conical glare elimination. Indirect distribution via white-opal, satin-finished acrylic diffuser. For VDU workstations $65^\circ < 3000\text{cd/m}^2$, $\text{UGR} \leq 19$ according to DIN EN 12464-1. Translucent connection cable pre-mounted. Single wire suspension with quick-adjust coupling, free height adjustment between 150 and 2000mm.



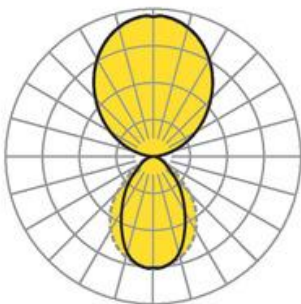
- Article No.: 5430144150
- Housing material: Aluminium
- Housing colour: aluminium, naturally anodised
- Light distribution: direct/indirect distribution
- Type of installation: Pendant individual mounting
- Certification mark: IP 20, Protection class I, VDU $65^\circ < 3000$, F, Indoor, CE

Dimensions



- Dimensions LxWxH/DxH: 2807 x 61 x 106 (mm)
- Pendant length min/max: 150 / 2000 (mm)
- Mounting distance A1: 2705 (mm)
- Weight (net): 10.7 (kg)

Lighting/Electrical



- Placement: LED, Colour rendering/Light colour CRI ≥ 80 / 4000K
- Direct/Indirect: 35 % / 65 %
- UGR lat/lon: 11.2 / 12.9
- Luminaire luminous flux: 8600 (lm)
- LED service life: 050000h L80/B10
- Luminaire luminous efficacy: 116 (lm/W)
- System output: 74 (W)
- Controller: Electronic driver (3 pcs.)
- Mains voltage max.: 230 V / 50 Hz
- Energy efficiency class: C