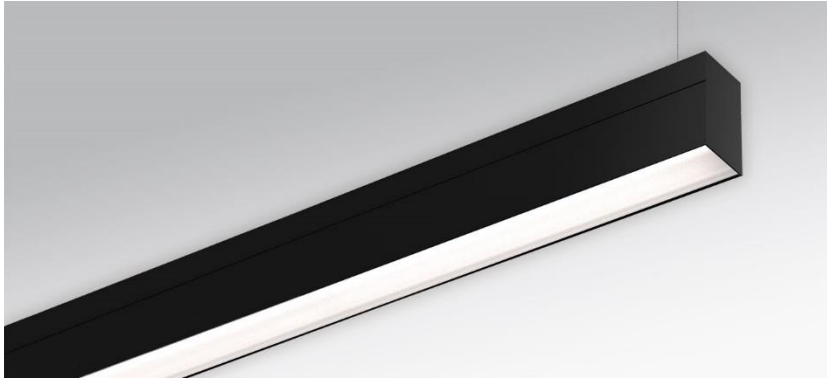
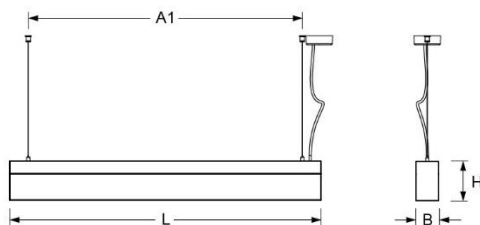


Pendant luminaire. Aluminium profile, naturally anodised. Face ends sheet steel. Textured paint black (similar to RAL 9005). Housing colour black RAL 9005. Direct- and indirect distribution via white-opal, satin-finished acrylic diffuser. Translucent connection cable pre-mounted. Single wire suspension with quick-adjust coupling, free height adjustment between 150 and 2000mm.



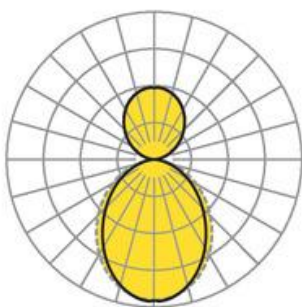
- Article No.: 5435144184
- Housing material: Aluminium
- Housing colour: black RAL 9005
- Light distribution: direct/indirect distribution
- Type of installation: Pendant individual mounting
- Certification mark: IP 20, Protection class I, F, Indoor, CE

Dimensions



- Dimensions LxWxH/DxH: 1407 x 61 x 106 (mm)
- Pendant length min/max: 150 / 2000 (mm)
- Mounting distance A1: 1305 (mm)
- Weight (net): 5.2 (kg)

Lighting/Electrical



- Placement: LED, Colour rendering/Light colour CRI ≥ 80 / 4000K
- Direct/Indirect: 64 % / 36 %
- UGR lat/lon: 22.1 / 23.3
- Luminaire luminous flux: 7900 (lm)
- LED service life: 050000h L80/B10
- Luminaire luminous efficacy: 113 (lm/W)
- System output: 70 (W)
- Controller: Electronic driver (2 pcs.)
- Mains voltage max.: 230 V / 50 Hz
- Energy efficiency class: C