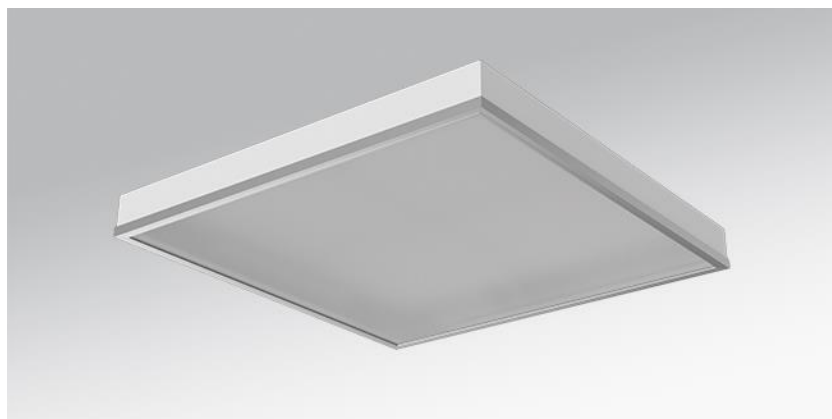
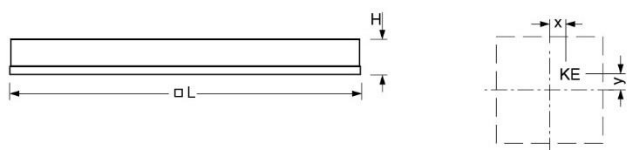


Surface-mounted luminaire. Sheet steel housing, powder-coated, glass frame of naturally anodised aluminium. Housing colour traffic white RAL 9016/aluminium naturally anodised. Light distribution via microprismatic panel with conical glare elimination in multilayer technology. For VDU workstations  $65^\circ < 3000\text{cd/m}^2$ ,  $\text{UGR} \leq 19$  according to DIN EN 12464-1. Electrical connection via five-pole connection terminal with plug-in contact. With integrated protective earth conductor connection and release button, suitable for rigid and flexible conductors up to  $2.5\text{mm}^2$ . Suitable for ceiling and wall installation. SH 55 suction pad to remove the diffuser must be ordered separately.



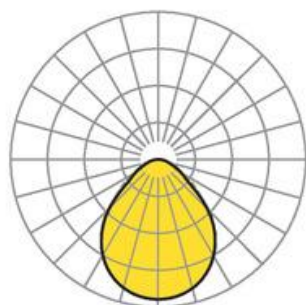
- Article No.: 5941216655
- Housing material: steel
- Housing colour: traffic white RAL 9016/aluminium naturally anodised
- Light distribution: direct distribution
- Type of installation: Individual surface mounting
- Certification mark: IP 20, Protection class I, VDU  $65^\circ < 3000$ , F, Indoor, CE

## Dimensions



- Dimensions LxWxH/DxH: 615 x 615 x 63 (mm)
- Mounting distance A1: 570 (mm)
- Weight (net): 6.5 (kg)
- Cable entry KE X/Y: 0 (mm) / 288 (mm)

## Lighting/Electrical



- Placement: LED, Colour rendering/Light colour CRI  $\geq 80$  / 4000K
- Direct/Indirect: 100 % / 0 %
- UGR lat/lon: 18.5 / 18.8
- Luminaire luminous flux: 5200 (lm)
- LED service life: 050000h L80/B10
- Luminaire luminous efficacy: 142 (lm/W)
- System output: 37 (W)
- Controller: Electronic driver DALI (1 pcs.)
- Mains voltage max.: 230 V / 50 Hz
- Energy efficiency class: C