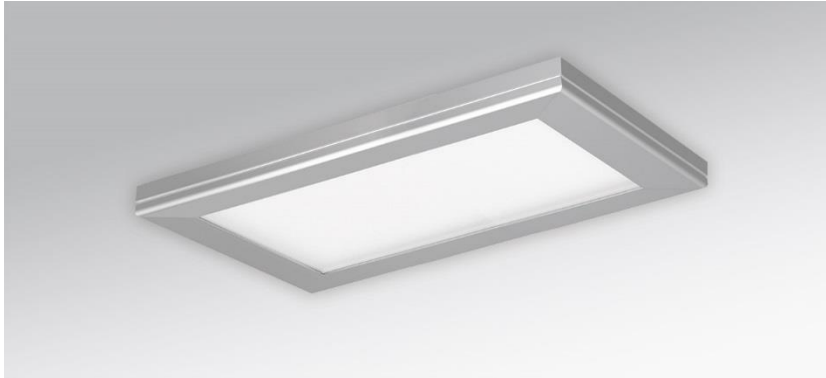
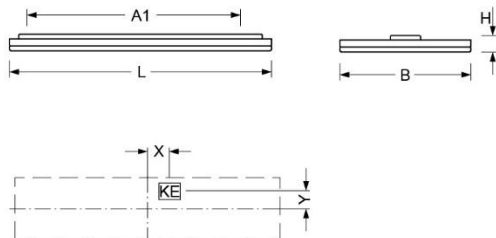


Wall luminaire. Ultra-flat luminaire housing, aluminium profile, natural anodised, visible construction height 30mm; with continuous longitudinal groove, rounded towards the front of the luminaire. Housing colour aluminium, naturally anodised. Direct/indirect distribution. Homogeneous illumination by satinised special acrylic panel, with high transmission; homogeneous light emission through lateral LED light coupling and fitted aluminium reflector in a highly reflective white coating, with micro-perforation for a moderate wall illumination. Electrical connection via five-pole connection terminal with plug-in contacts; with integrated protective earth conductor connection and release button, suitable for rigid and flexible conductors up to 2.5mm<sup>2</sup> Suitable for wall- and ceiling-mounting.



- Article No.: 4611046615
- Housing material: Aluminium
- Housing colour: aluminium, naturally anodised
- Light distribution: direct/indirect distribution
- Type of installation: Wall mounting
- Certification mark: IP 20, Protection class I, F, Indoor, CE

## Dimensions



- Dimensions LxWxH/DxH: 635 x 330 x 42 (mm)
- Mounting distance A1: 548 (mm)
- Weight (net): 4.15 (kg)

## Lighting/Electrical



- Placement: LED, Colour rendering/Light colour CRI  $\geq 80$  / 4000K
- Direct/Indirect: 84 % / 16 %
- Luminaire luminous flux: 2600 (lm)
- LED service life: 050000h L80/B50
- Luminaire luminous efficacy: 111 (lm/W)
- System output: 24 (W)
- Controller: Electronic driver DALI (1 pcs.)
- Mains voltage max.: 230 V / 50 Hz
- Energy efficiency class: C