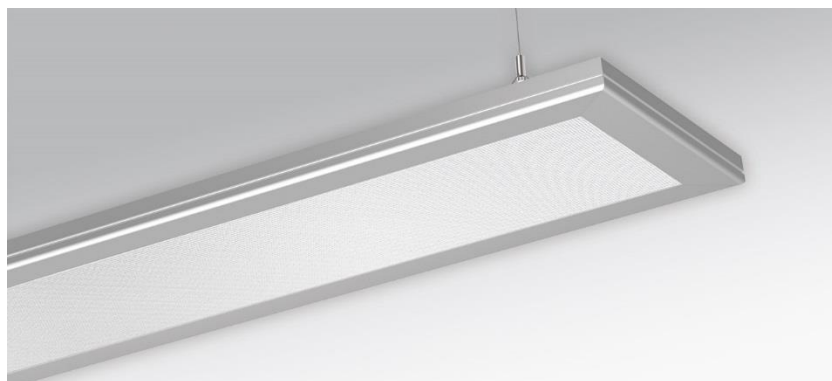
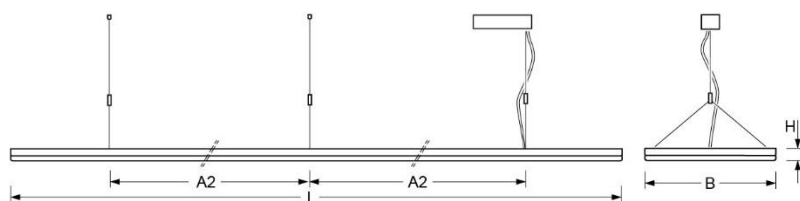


Pendant luminaire. Ultra-flat luminaire housing, aluminium profile, natural anodised, visible construction height 30mm with continuous longitudinal groove, rounded towards the bottom of the luminaire. Housing colour aluminium, naturally anodised. Direct/indirect distribution. Direct portion by means of a microprismatic panel with conical glare elimination; homogeneous light emission through lateral LED light coupling and fitted aluminium reflector in a highly reflective white coating. With microperforation at upper side of the housing for a moderate ceiling illumination. For VDU workstations $65^\circ < 3000\text{cd/m}^2$, $\text{UGR} \leq 19$ according to DIN EN 12464-1. Translucent connection cable pre-mounted. Y-wire suspension with rapid coupling, free height adjustment between 160 and 1900mm.



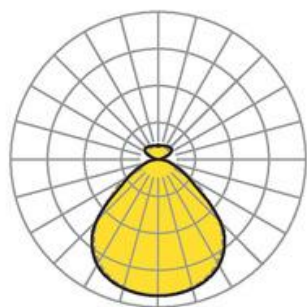
- Article No.: 4261056675
- Housing material: Aluminium
- Housing colour: aluminium, naturally anodised
- Light distribution: direct/indirect distribution
- Type of installation: Pendant individual mounting
- Certification mark: IP 20, Protection class I, VDU $65^\circ < 3000$, F, Indoor, CE

Dimensions



- Dimensions LxWxH/DxH: 2884 x 330 x 30 (mm)
- Pendant length min/max: 150 / 2000 (mm)
- Mounting distance A1: 2266 (mm)
- Mounting distance A2: 1133 (mm)
- Weight (net): 15 (kg)

Lighting/Electrical



- Placement: LED, Colour rendering/Light colour CRI ≥ 80 / 4000K
- Direct/Indirect: 84 % / 16 %
- UGR lat/lon: 18.1 / 18.3
- VDU: $65^\circ < 3000\text{cd/m}^2$
- Luminaire luminous flux: 12600 (lm)
- LED service life: 050000h L80/B10
- Luminaire luminous efficacy: 114 (lm/W)
- System output: 110 (W)
- Controller: Electronic driver DALI (2 pcs.)
- Mains voltage max.: 230 V / 50 Hz
- Energy efficiency class: C