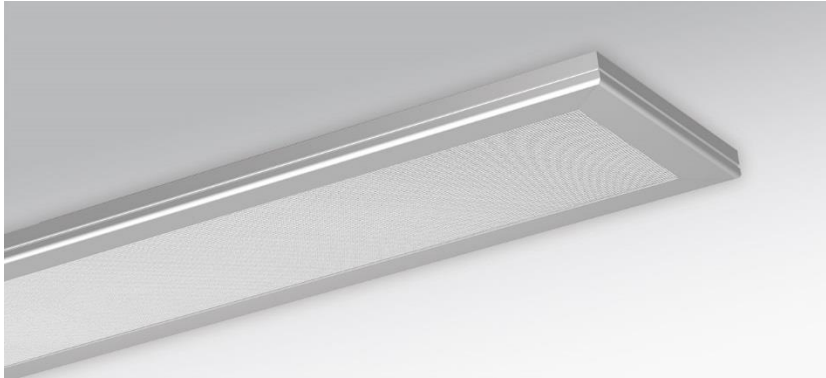
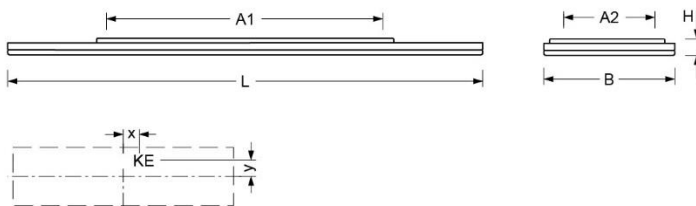


Surface-mounted luminaire. Ultra-flat luminaire housing, aluminium profile, natural anodised, visible construction height 30mm with continuous longitudinal groove, rounded towards the bottom of the luminaire. Housing colour aluminium, naturally anodised. Direct/indirect distribution. Direct portion by means of a microprismatic panel with conical glare elimination; homogeneous light emission through lateral LED light coupling and fitted aluminium reflector in a highly reflective white coating. With micro-perforation at upper side of the housing for a moderate ceiling illumination. For VDU workstations $65^\circ < 3000\text{cd/m}^2$, $\text{UGR} \leq 19$ according to DIN EN 12464-1. Luminaire in tunable white technology for Human Centric Lighting. 927/warm white (2700K) - 965/daylight white (6500K) continuously adjustable. Electrical connection via three-pole connection terminal with plug-in contacts; with integrated protective earth conductor connection and release button, suitable for rigid and flexible conductors up to 2.5mm^2 . Pre-assembled connection cable.



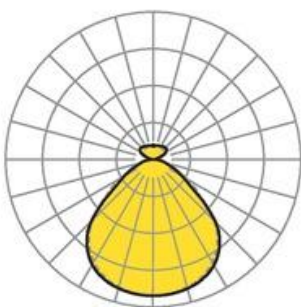
- Article No.: 4424016975
- Housing material: Aluminium
- Housing colour: aluminium, naturally anodised
- Light distribution: direct/indirect distribution
- Type of installation: Individual surface mounting
- Certification mark: IP 20, Protection class I, VDU $65^\circ < 3000$, F, HCL, Indoor, CE

Dimensions



- Dimensions LxWxH/DxH: 1199 x 330 x 42 (mm)
- Mounting distance A1: 700 (mm)
- Mounting distance A2: 230 (mm)
- Weight (net): 7.6 (kg)
- Cable entry KE X/Y: 0 (mm) / 0 (mm)

Lighting/Electrical



- Placement: LED, Colour rendering/Light colour CRI ≥ 90 / 2700K-6500K continuously adjustable
- Direct/Indirect: 84 % / 16 %
- UGR lat/lon: 17.1 / 17.3
- VDU: $65^\circ < 3000\text{cd/m}^2$
- Luminaire luminous flux: 3700 (lm)
- LED service life: 050000h L80/B10
- Luminaire luminous efficacy: 82 (lm/W)
- System output: 45 (W)
- Controller: Electronic driver DALI device type 8 (2 pcs.)
- Mains voltage max.: 230 V / 50 Hz
- Energy efficiency class: E