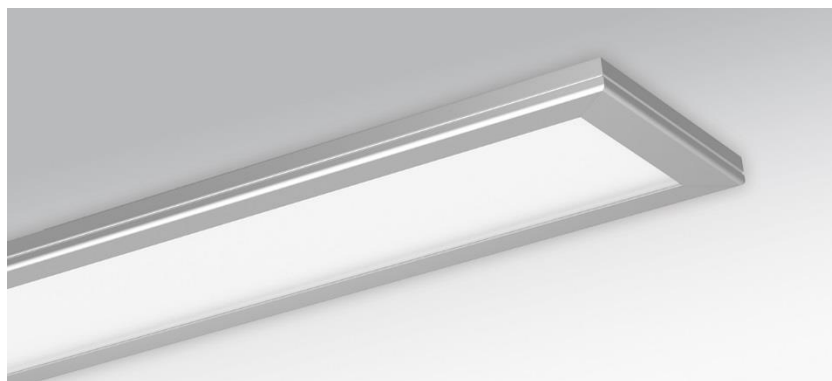
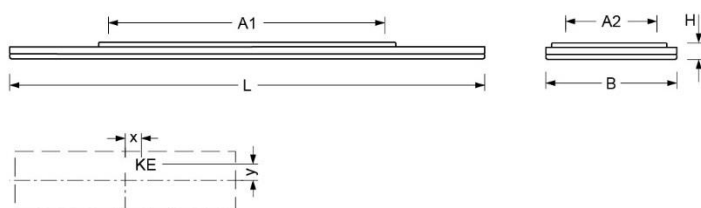


Surface-mounted luminaire. Ultra-flat luminaire housing, aluminium profile, natural anodised, visible construction height 30mm with continuous longitudinal groove, rounded towards the bottom of the luminaire. Housing colour aluminium, naturally anodised. Direct/indirect distribution. Homogeneous illumination by satinised special acrylic panel, with high transmission and homogeneous light emission through lateral LED light coupling and fitted aluminium reflector in a highly reflective white coating. With micro-perforation at upper side of the housing for a moderate ceiling illumination. Electrical connection via three-pole connection terminal with plug-in contacts; with integrated protective earth conductor connection and release button, suitable for rigid and flexible conductors up to 2.5mm<sup>2</sup>. Pre-assembled connection cable.



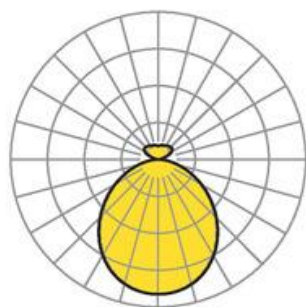
- Article No.: 4421014115
- Housing material: Aluminium
- Housing colour: aluminium, naturally anodised
- Light distribution: direct/indirect distribution
- Type of installation: Individual surface mounting
- Certification mark: IP 20, Protection class I, F, Indoor, CE

## Dimensions



- Dimensions LxWxH/DxH: 1199 x 330 x 42 (mm)
- Mounting distance A1: 700 (mm)
- Mounting distance A2: 230 (mm)
- Weight (net): 7.5 (kg)
- Cable entry KE X/Y: 0 (mm) / 0 (mm)

## Lighting/Electrical



- Placement: LED, Colour rendering/Light colour CRI  $\geq 80$  / 4000K
- Direct/Indirect: 84 % / 16 %
- UGR lat/lon: 20.2 / 20.0
- Luminaire luminous flux: 4900 (lm)
- LED service life: 050000h L80/B10
- Luminaire luminous efficacy: 112 (lm/W)
- System output: 44 (W)
- Controller: Electronic driver (1 pcs.)
- Mains voltage max.: 230 V / 50 Hz
- Energy efficiency class: C