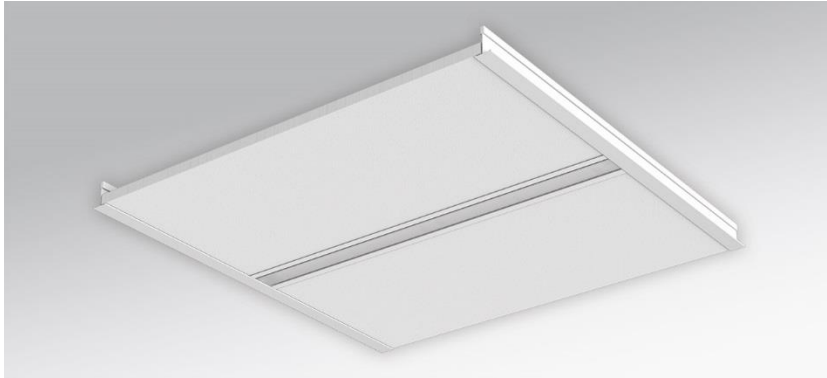
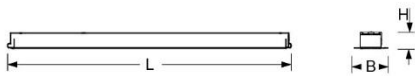


Recessed luminaire. Painted sheet steel, for ceilings with visible T-rails 24mm. LED support unit made from aluminium profile, natural anodised. Housing colour traffic white RAL 9016. Direct symmetrical distribution. Light distribution via white-opal satin-finished acrylic profile. External supply unit wired ready for operation with luminaire. Electrical connection via three-pole feed-in and connection terminal with plug-in technology, with integrated protective earth connection and unlocking button, suitable for rigid and flexible cables up to 2,5mm².



- Article No.: 7332144180
- Housing material: steel
- Housing colour: traffic white RAL 9016
- Light distribution: direct distribution
- Type of installation: Recessed mounting
- Certification mark: IP 20, Protection class I, F-“roof” mark, Indoor, CE

Dimensions



- Dimensions LxWxH/DxH: 598 x 57 x 27 (mm)
- Ceiling system: Ceilings with visible T-rails / 24mm [s-TS] (600x600mm)
- Ceiling cut-out LxW/D: x 36 (mm)
- Module axis LxW: 600 x 600 (mm)
- Installation depth: 60(s-TS) (mm)
- Weight (net): 1.5 (kg)

Lighting/Electrical



- Placement: LED, Colour rendering/Light colour CRI ≥ 80 / 4000K
- Direct/Indirect: 100 % / 0 %
- UGR lat/lon: 28.0 / 28.2
- Luminaire luminous flux: 1800 (lm)
- LED service life: 50000h L80/B10 (Tq 25°C)
- Luminaire luminous efficacy: 109 (lm/W)
- System output: 17 (W)
- Controller: Electronic driver (1 pcs.)
- Mains voltage max.: 230 V / 50 Hz
- Energy efficiency class: C