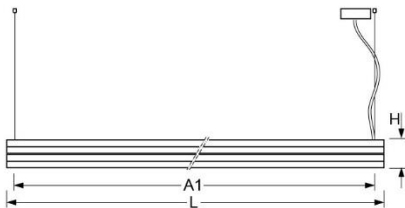


Pendant luminaire. Aluminium profile, natural anodised, with surrounding shadow joint. Housing colour aluminium, naturally anodised. Direct/indirect distribution. Unique light play thanks to unordered structuring of LED lines. Pre-assembled, translucent connection cable. Four wire suspensions with quick-adjust coupling, free height adjustment up to 2000mm.



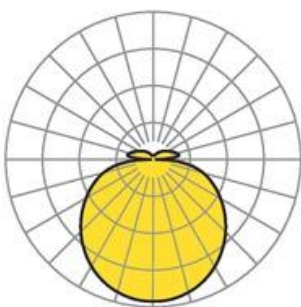
- Article No.: 4020046605
- Housing material: Aluminium
- Housing colour: aluminium, naturally anodised
- Light distribution: direct/indirect distribution
- Type of installation: Pendant individual mounting
- Certification mark: IP 20, Protection class I, F, Indoor, CE

Dimensions



- Dimensions LxWxH/DxH: 1200 x 1200 x 71 (mm)
- Pendant length min/max: 150 / 2000 (mm)
- Mounting distance A1: 1166 (mm)
- Weight (net): 9.4 (kg)

Lighting/Electrical



- Placement: LED, Colour rendering/Light colour CRI ≥ 80 / 4000K
- Direct/Indirect: 85 % / 15 %
- UGR lat/lon: 22.0 / 22.1
- Luminaire luminous flux: 16800 (lm)
- LED service life: 050000h L80/B10
- Luminaire luminous efficacy: 163 (lm/W)
- System output: 103 (W)
- Controller: Electronic driver DALI (4 pcs.)
- Mains voltage max.: 230 V / 50 Hz
- Energy efficiency class: C