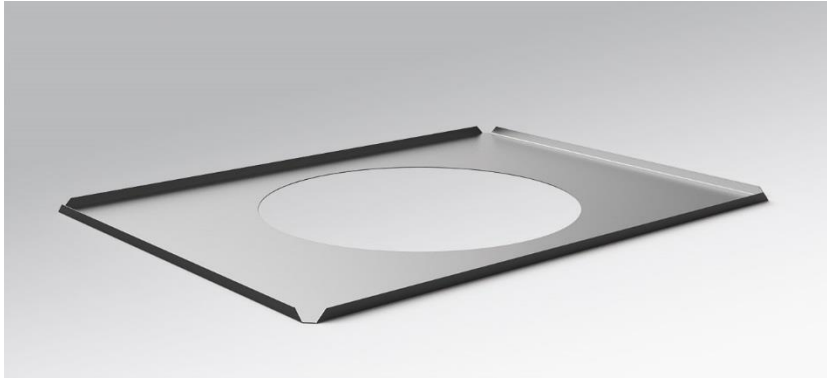


Mounting frame. Reinforcing for mineral fiber ceilings with visible T-rail. Suitable for lopia R 300 and ceilings in module axis 625x625. Housing colour galvanised.



- Article No.: 3663200000
- Housing material: StZn
- Housing colour: galvanised
- Certification mark: CE

Dimensions

- Dimensions LxWxH/DxH: 622 x 460 x 11 (mm)
- Module axis LxW: 625 x 625 (mm)
- Weight (net): 1.3 (kg)