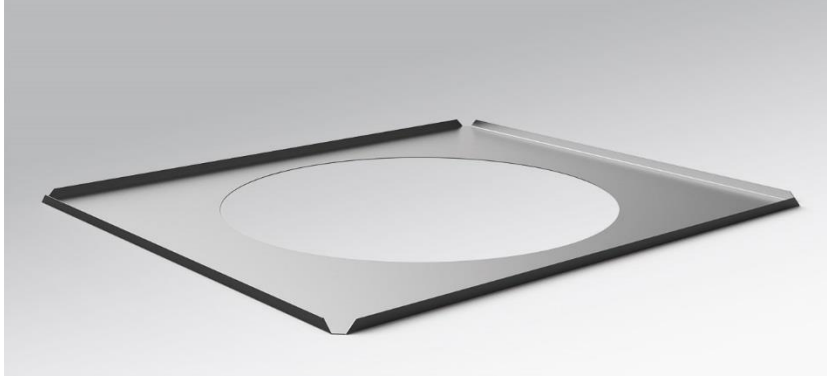


Mounting frame. Reinforcing for mineral fiber ceilings with visible T-rail. Suitable for lopia R 400 and ceilings in module axis 600x600. Housing colour galvanised.



- Article No.: 3664260000
- Housing material: StZn
- Housing colour: galvanised
- Certification mark: CE

Dimensions

- Dimensions LxWxH/DxH: 597 x 540 x 11 (mm)
- Module axis LxW: 600 x 600 (mm)
- Weight (net): 1.2 (kg)