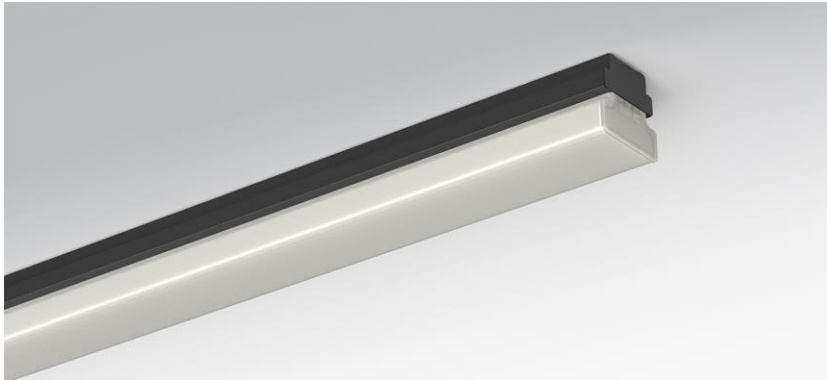
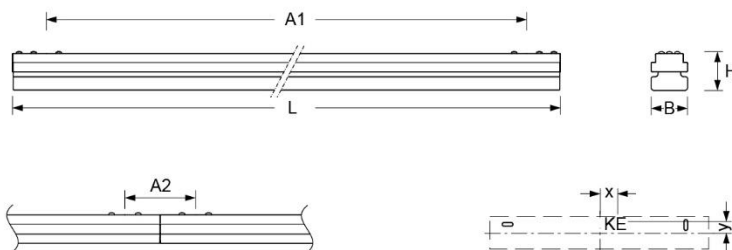


Surface-mounted luminaire. Sheet steel housing, powder-coated. Arrangeable as optically continuous light-lines through easy removable end-caps. Housing colour black RAL 9005. Direct/indirect light distribution, opal diffuser made of PMMA plastic with inner longitudinal prisms produces a uniform, homogeneous appearance with ceiling brightening. Electrical connection via three-pole connection terminal with plug-in contact. With integrated protective earth conductor connection and release button, suitable for rigid and flexible conductors up to 2.5mm². Available accessories: For surface mounting as continuous light-line one through-wiring clip-on-DV (771 9000 100) per joint is needed. For pendant mounting as single luminaire one mounting kit clip-on-SAES (771 0057 105) is required. For pendant mounting as continuous light-line one suspension set clip-on-SAES (771 0057 105) is needed. Additionally for each joint one suspension clip-on-SAVS (771 0000 105) and one through-wiring clip-on-DV (771 9000 100) is necessary. Suspension length 2000mm.



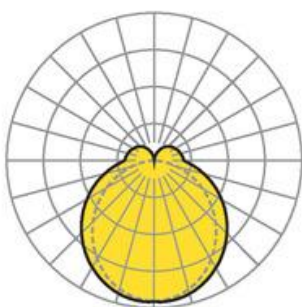
- Article No.: 7719346604
- Housing material: steel
- Housing colour: black RAL 9005
- Light distribution: direct/indirect distribution
- Type of installation: Individual surface mounting, Surface-mounted light run installation
- Certification mark: IP 20, Protection class I, F, Indoor, CE

Dimensions



- Dimensions LxWxH/DxH: 1154 x 63 x 60 (mm)
- Mounting distance A1: 1120 (mm)
- Mounting distance A2: 101 (mm)
- Weight (net): 2 (kg)
- Cable entry KE X/Y: 0 (mm) / 0 (mm)

Lighting/Electrical



- Placement: LED, Colour rendering/Light colour CRI ≥ 80 / 4000K
- Direct/Indirect: 84 % / 16 %
- UGR lat/lon: 24.3 / 22.7
- Luminaire luminous flux: 4100 (lm)
- LED service life: 50000h L80/B10 (Tq 25°C)
- Luminaire luminous efficacy: 176 (lm/W)
- System output: 23 (W)
- Controller: Electronic driver DALI (1 pcs.)
- Mains voltage max.: 230 V / 50 Hz
- Driver/Breaker: 13 pieces/B10
21 pieces/B16|21 pieces/C10|35 pieces/C16
- Energy efficiency class: B