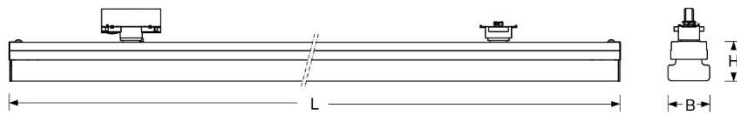


phase track luminaire. Sheet steel housing, powder-coated. Housing colour black RAL 9005. Direct/indirect light distribution, opal diffuser made of PMMA plastic with inner longitudinal prisms produces a uniform, homogeneous appearance with ceiling brightening. Electrical connection via 3-phase conductor rail + DALI adapter, type DPSN/DPSNA (dimmable). For conductor rail system Lichtwerk DPSN/DPSNA, Global Trac DALI. Available accessories: Tool clip-TT ERW to release luminaire from track (722 9000 100)



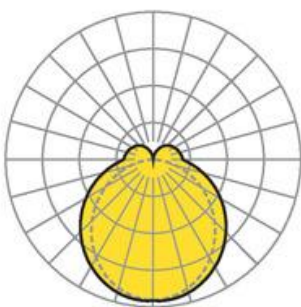
- Article No.: 7729346604
- Housing material: steel
- Housing colour: black RAL 9005
- Light distribution: direct/indirect distribution
- Type of installation: Track mounting
- Certification mark: IP 20, Protection class I, F, Indoor, CE

Dimensions



- Dimensions LxWxH/DxH: 1150 x 63 x 60 (mm)
- Weight (net): 2.2 (kg)

Lighting/Electrical



- Placement: LED, Colour rendering/Light colour CRI ≥ 80 / 4000K
- Direct/Indirect: 84 % / 16 %
- UGR lat/lon: 24.3 / 22.7
- Luminaire luminous flux: 4200 (lm)
- LED service life: 50000h L80/B10 (Tq 25°C)
- Luminaire luminous efficacy: 176 (lm/W)
- System output: 23 (W)
- Controller: Electronic driver DALI (1 pcs.)
- Mains voltage max.: 230 V / 50 Hz
- Energy efficiency class: B