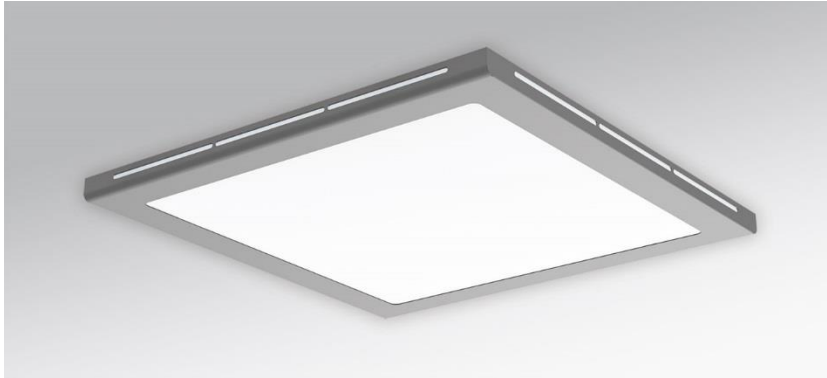


Recessed luminaire. Housing and diffuser frame of painted sheet steel with lateral openings for light emission; for recessed ceilings or ceilings with visible T-rails 24mm or 15mm; Housing colour white aluminium RAL 9006. Direct/indirect distribution. Homogeneous illumination by satinised special acrylic panel, with high transmission. Suitable for VDU workstations according to DIN EN 12464-1,  $65^\circ < 3000\text{cd/m}^2$ . Electrical connection via five-pole connection terminal with plug-in contacts; with integrated protective earth conductor connection and release button, suitable for rigid and flexible conductors up to 2.5mm<sup>2</sup>.



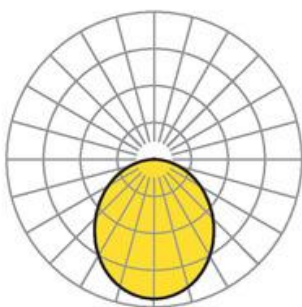
- Article No.: 5420016685
- Housing material: steel
- Housing colour: white aluminium RAL 9006
- Light distribution: direct distribution
- Type of installation: Ceiling installation individual mounting
- Certification mark: IP 20, Protection class I, VDU  $65^\circ < 3000$ , F, Indoor, CE

## Dimensions



- Dimensions LxWxH/DxH: 625 x 625 x 138 (mm)
- Ceiling system: Ceilings with visible T-rails [s-TS] (625x625 mm), cut-out ceilings [AD]
- Ceiling cut-out LxW/D: 585 x 585 (mm)
- Ceiling thickness min/max: 5 / 20 (mm)
- Module axis LxW: 625 x 625 (mm)
- Installation depth: 120(AD); 120(s-TS) (mm)
- Weight (net): 5.04 (kg)

## Lighting/Electrical



- Placement: LED, Colour rendering/Light colour CRI  $\geq 80$  / 4000K
- Direct/Indirect: 99 % / 1 %
- UGR lat/lon: 20.4 / 20.4
- Luminaire luminous flux: 3000 (lm)
- LED service life: 50000h L80/B10 (Tq 25°C)
- Luminaire luminous efficacy: 121 (lm/W)
- System output: 26 (W)
- Controller: Electronic driver DALI (1 pcs.)
- Mains voltage max.: 230 V / 50 Hz
- Energy efficiency class/light source: B