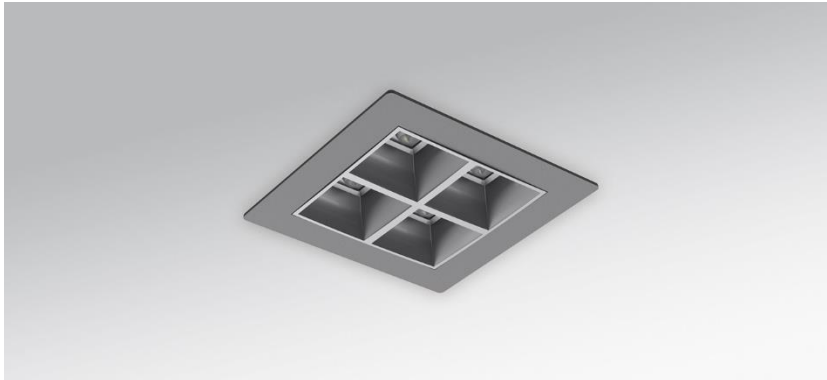
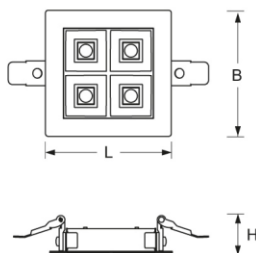


Recessed downlight. Square sheet steel housing with minimalistic rim for cut-out ceilings. Fine structure paint white aluminum (similar to RAL 9006). With fastening springs for tool-free assembly. Housing colour white aluminium RAL 9006 / silver. Direct wide distribution. Highly efficient combination of micro cell louvre in silver and wide distribution lens optics. External supply unit with luminaire wired ready for operation. Electrical connection via two-pole connection terminal in plug-in contact technology. DV box 3-pin. Through-wiring three-pin box. If required, please order separately.



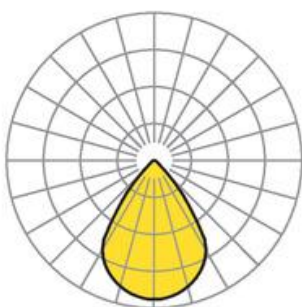
- Article No.: 3902834166
- Housing material: steel
- Housing colour: white aluminium RAL 9006 / silver
- Light distribution: direct wide distribution
- Type of installation: Individual recessed mounting
- Certification mark: IP 20, Protection class II, F, Indoor, CE

Dimensions



- Dimensions LxWxDxH: 112 x 112 x 34 (mm)
- External driver housing LxWxH: 120 x 51 x 30 (mm)
- Ceiling system: cut-out ceilings [AD]
- Ceiling cut-out LxW/D: 105 x 85 (mm)
- Ceiling thickness min/max: 1 / 25 (mm)
- Installation depth: 50(AD) (mm)
- Weight (net): 0.35 (kg)

Lighting/Electrical



- Placement: LED, Colour rendering/Light colour CRI ≥ 80 / 3000K
- Direct/Indirect: 100 % / 0 %
- UGR lat/lon: 21.4 / 21.4
- Luminaire luminous flux: 1200 (lm)
- LED service life: 95000h L80/B10 (Tq 25°C), 45000h L90/B50 (Tq 25°C)
- Luminaire luminous efficacy: 132 (lm/W)
- System output: 9 (W)
- Controller: Electronic driver (1 pcs.)
- Mains voltage max.: 230 V / 50 Hz
- Energy efficiency class/light source: C