

lichtwerk  
inspired by light



clip-on, clip-TT, clip-it  
The variable luminaire series

# Variable luminaire series

In many sectors flexibility as well as individuality are the demanding tasks. With its diverse mounting options our new luminaire series fits these tasks perfectly.

No matter if visible T-rail, 3-phase track, surface or pendant mounting, there is a solution for each case. Even a continuous row is no problem for this multitalented luminaire.

Convince yourself about the variety and flexibility of this luminaire series which will inspire by its versatility as well as by the lighting technological capability.



## clip-on

The surface mounted luminaire clip-on can be converted as pendant luminaire using the suspension accessory set. By the means of removable end-caps an optically continuous light-line can be created with the surface mounted as well as with the pendant version.

### Features

- optically continuous light-line via easily removable end-caps
- suspension accessory set



## clip-TT

The clip-TT is especially designed for mounting on 3-phase tracks and offers the option to include additional lighting technologies. In combination with the track DPSN our clip-TT is also available in dimmable version. Versatile accessories for tracks allow creation of any light structures.

### Features

- for mounting on common euro-3-phase track systems
- track DPSN for dimmable luminaires and creation of any light structures



## clip-it

The version clip-it is suitable for ceilings with visible T-rails (24 mm). Here the particular subject is the fixing of the luminaire by special clips allowing flexible arrangement and fastening of the luminaires onto the T-system.

### Features

- for mounting on visible T-rails (24mm)
- flexible luminaire arrangement through special mounting clips



# Lens optics



4 Lighting technologies

for your applications

Lens optic wide distribution



Lens optic narrow-wide distribution



Lens optic diffuse



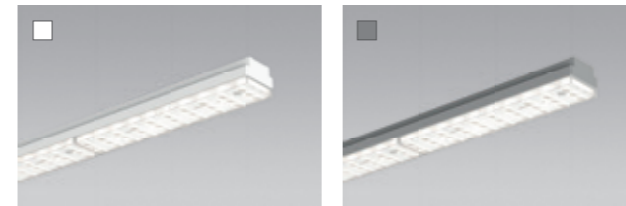
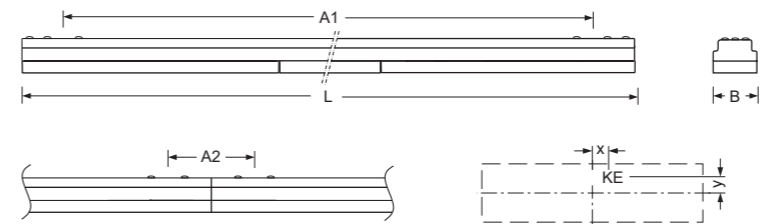
on request

Lens optic double asymmetrical





Type	L	B	H	A1	A2	X	Y
clip-on/1200	1222	55	44	1120	101	0	0
clip-on/1500	1527	55	44	1425	101	0	0
clip-on/1800	1832	55	44	1730	101	0	0



**clip-on-OB/1500**  
5800lm 840

$\eta_{LB}$  100 %

Direct 98 %  
Indirect 2 %  
UGR lat. 20,3  
UGR long 20,7

A+



## clip-on-OB

IP20

### Housing

Sheet steel, powder-coated traffic white (similar to RAL 9016) or white aluminium (similar to RAL 9006). Arrangeable as optically continuous light-lines, through easily removable end-caps.

### Lighting technology -OB

Direct wide light distribution.  
Translucent lens optics made of acrylic with additional lateral transmission.  
Rated life time = L80 B10 50.000h.  
Light colour 830 available on request.

### Miscellaneous

Electrical connection via 3-pole (with dimmable luminaires: 5-pole) plug-in connection terminal; with integrated earth conductor connection and unlocking button, suitable for rigid and flexible cables up to 2.5mm<sup>2</sup>.

### Accessories

For surface mounting as continuous light-line one through-wiring clip-on-DV per joint is needed. For pendant mounting as single luminaire one mounting kit clip-on-SAES is required. For pendant mounting as continuous light-line one mounting kit clip-on-SAES is needed and for each additional luminaire one suspension clip-on SAVS and one through-wiring clip-on is required. Suspension length 2000mm. Accessories have to be ordered separately.

Type	Colour	LED Specification	P <sub>sys</sub> (W)	ED	DALI	
clip-on-OB/1200		LED 4600lm 840	31	771 1444 100	771 1446 600	2,1
clip-on-OB/1200		LED 4600lm 840	31	771 1444 106	771 1446 606	2,1
clip-on-OB/1500		LED 5800lm 840	39	771 1544 100	771 1546 600	2,7
clip-on-OB/1500		LED 5800lm 840	39	771 1544 106	771 1546 606	2,7
clip-on-OB/1800		LED 6900lm 840	47	771 1644 100	771 1646 600	3,3
clip-on-OB/1800		LED 6900lm 840	47	771 1644 106	771 1646 606	3,3

► Please refer to the current data for LED luminaires at [www.lichtwerk.de](http://www.lichtwerk.de)

Accessories	Details	Item-number	
clip-on-DV	through wiring	771 9000 100	0,2
clip on SAES	pendant accessory set 2200/120 3x0,75 tp Set, wire suspension with connection kit	771 0037 105	0,2
	pendant accessory set 2200/120 5x0,75 tp Set, wire suspension with connection kit	771 0057 105	0,3
clip on-SAVS	pendant accessory set for a continuous light-line 2200/120, wire suspension with connection	771 0000 105	0,1



## clip-on-OTB

IP20

### Housing

Sheet steel, powder-coated traffic white (similar to RAL 9016) or white aluminium (similar to RAL 9006). Arrangeable as optically continuous light-lines, through easily removable end-caps.

### Lighting technology -OTB

Direct narrow-wide light distribution.  
Translucent lens optics made of acrylic with additional lateral transmission.  
Rated life time = L80 B10 50.000h.  
Light colour 830 available on request.

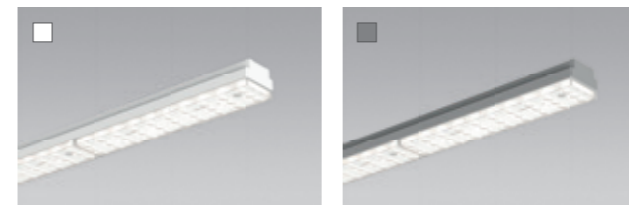
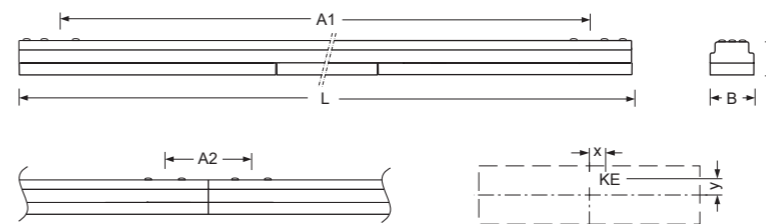
### Miscellaneous

Electrical connection via 3-pole (with dimmable luminaires: 5-pole) plug-in connection terminal; with integrated earth conductor connection and unlocking button, suitable for rigid and flexible cables up to 2.5mm<sup>2</sup>.

### Accessories

For surface mounting as continuous light-line one through-wiring clip-on-DV per joint is needed. For pendant mounting as single luminaire one mounting kit clip-on-SAES is required. For pendant mounting as continuous light-line one mounting kit clip-on-SAES is needed and for each additional luminaire one suspension clip-on SAVS and one through-wiring clip-on is required. Suspension length 2000mm. Accessories have to be ordered separately.

Type	L	B	H	A1	A2	X	Y
clip-on/1200	1222	55	44	1120	101	0	0
clip-on/1500	1527	55	44	1425	101	0	0
clip-on/1800	1832	55	44	1730	101	0	0



**clip-on-OTB/1500**  
5800lm 840

$\eta_{LB}$  100 %

Direct 98 %  
Indirect 2 %  
UGR lat. 17,8  
UGR long 18,1

A+



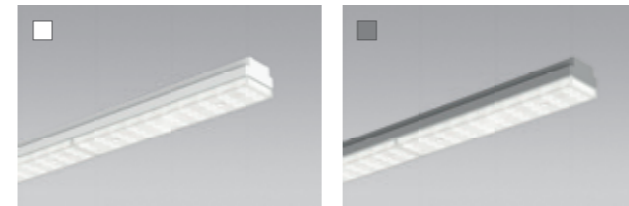
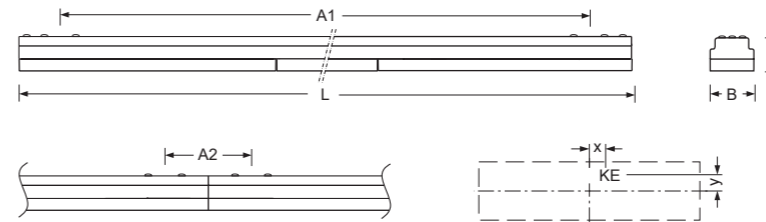
Type	Colour	LED Specification	P <sub>sys</sub> (W)	ED	DALI	
clip-on-OTB/1200		LED 4600lm 840	31	771 3444 100	771 3446 600	2,1
clip-on-OTB/1200		LED 4600lm 840	31	771 3444 106	771 3446 606	2,1
clip-on-OTB/1500		LED 5800lm 840	39	771 3544 100	771 3546 600	2,7
clip-on-OTB/1500		LED 5800lm 840	39	771 3544 106	771 3546 606	2,7
clip-on-OTB/1800		LED 6900lm 840	47	771 3644 100	771 3646 600	3,3
clip-on-OTB/1800		LED 6900lm 840	47	771 3644 106	771 3646 606	3,3

► Please refer to the current data for LED luminaires at [www.lichtwerk.de](http://www.lichtwerk.de)

Accessories	Details	Item-number	
clip-on-DV	through wiring	771 9000 100	0,2
clip on SAES	pendant accessory set 2200/120 3x0,75 tp Set, wire suspension with connection kit	771 0037 105	0,2
	pendant accessory set 2200/120 5x0,75 tp Set, wire suspension with connection kit	771 0057 105	0,3
clip on-SAVS	pendant accessory set for a continuous light-line 2200/120, wire suspension with connection	771 0000 105	0,1



Type	L	B	H	A1	A2	X	Y
clip-on/1200	1222	55	44	1120	101	0	0
clip-on/1500	1527	55	44	1425	101	0	0
clip-on/1800	1832	55	44	1730	101	0	0



**clip-on-OG/1500**  
5700lm 840

$\eta_{LB}$  100%

Direct 90%  
Indirect 10%  
UGR lat. 25,5  
UGR long 24,9

A+



## clip-on-OG

IP20

### Housing

Sheet steel, powder-coated traffic white (similar to RAL 9016) or white aluminium (similar to RAL9006). Arrangeable as optically continuous light-lines, through easily removable end-caps.

### Lighting technology -OG

Direct/indirect light distribution.  
Diffuse lens optics made of frosted acrylic with additional lateral transmission.  
Rated life time = L80 B10 50.000h.  
Light colour 830 available on request.

### Miscellaneous

Electrical connection via 3-pole (with dimmable luminaires: 5-pole) plug-in connection terminal; with integrated earth conductor connection and unlocking button, suitable for rigid and flexible cables up to 2.5mm<sup>2</sup>.

### Accessories

For surface mounting as continuous light-line one through-wiring clip-on-DV per joint is needed. For pendant mounting as single luminaire one mounting kit clip-on-SAES is required. For pendant mounting as continuous light-line one mounting kit clip-on-SAES is needed and for each additional luminaire one suspension clip-on SAVS and one through-wiring clip-on is required. Suspension length 2000mm. Accessories have to be ordered separately.

Type	Colour	LED Specification	P <sub>sys</sub> (W)	ED	DALI	
clip-on-OG/1200		LED 4500lm 840	31	771 7444 100	771 7446 600	2,1
clip-on-OG/1200		LED 4500lm 840	31	771 7444 106	771 7446 606	2,1
clip-on-OG/1500		LED 5700lm 840	39	771 7544 100	771 7546 600	2,7
clip-on-OG/1500		LED 5700lm 840	39	771 7544 106	771 7546 606	2,7
clip-on-OG/1800		LED 6800lm 840	47	771 7644 100	771 7646 600	3,3
clip-on-OG/1800		LED 6800lm 840	47	771 7644 106	771 7646 606	3,3

► Please refer to the current data for LED luminaires at [www.lichtwerk.de](http://www.lichtwerk.de)

Accessories	Details	Item-number	
clip-on-DV	through wiring	771 9000 100	0,2
clip on SAES	pendant accessory set 2200/120 3x0,75 tp Set, wire suspension with connection kit	771 0037 105	0,2
	pendant accessory set 2200/120 5x0,75 tp Set, wire suspension with connection kit	771 0057 105	0,3
clip on-SAVS	pendant accessory set for a continuous light-line 2200/120, wire suspension with connection	771 0000 105	0,1





## clip-TT-OB

IP20

### Housing

Sheet steel, powder-coated traffic white (similar to RAL 9016), black (similar to RAL 9005) or painted white aluminium (similar to RAL 9006).

### Lighting technology -OB

Direct wide light distribution.

Translucent lens optics made of acrylic with additional lateral transmission.

Rated life time = L80 B10 50.000h.

Light colour 830 available on request.

### Miscellaneous

Electrical connection via 3-Phase + DALI track adaption type DPSN (dimmable) or universal adaption for ED (switchable)

Type	L	B	H
clip-TT/1200	1220	55	40
clip-TT/1500	1525	55	40
clip-TT/1800	1830	55	40



clip-TT-OB/1500	
5800lm 840	
$\eta_{LB}$	100 %
Direct	98 %
Indirect	2 %
UGR lat.	20,3
UGR long	20,7
A+	



Type	Colour	LED Specification	P <sub>sys</sub> (W)	ED	DALI	
clip-TT-OB/1200		LED 4600lm 840	31	772 1444 100	772 1446 600	2,2
clip-TT-OB/1200		LED 4600lm 840	31	772 1444 106	772 1446 606	2,2
clip-TT-OB/1200		LED 4600lm 840	31	772 1444 104	772 1446 604	2,2
clip-TT-OB/1500		LED 5800lm 840	39	772 1544 100	772 1546 600	2,8
clip-TT-OB/1500		LED 5800lm 840	39	772 1544 106	772 1546 606	2,8
clip-TT-OB/1500		LED 5800lm 840	39	772 1544 104	772 1546 604	2,8
clip-TT-OB/1800		LED 6900lm 840	47	772 1644 100	772 1646 600	3,3
clip-TT-OB/1800		LED 6900lm 840	47	772 1644 106	772 1646 606	3,3
clip-TT-OB/1800		LED 6900lm 840	47	772 1644 104	772 1646 604	3,3

► Please refer to the current data for LED luminaires at [www.lichtwerk.de](http://www.lichtwerk.de)





clip-TT for 3-phase track DPSN

## clip-TT-OTB

IP20

### Housing

Sheet steel, powder-coated traffic white (similar to RAL 9016), black (similar to RAL 9005) or painted white aluminium (similar to RAL 9006).

### Lighting technology -OTB

Direct narrow-wide light distribution.

Translucent lens optics made of acrylic with additional lateral transmission.

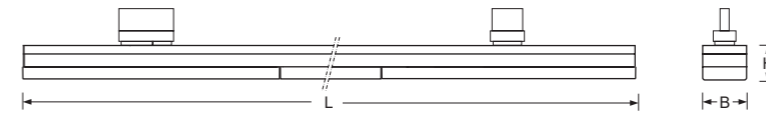
Rated life time = L80 B10 50.000h.

Light colour 830 available on request.

### Miscellaneous

Electrical connection via 3-Phase + DALI track adaption type DPSN (dimmable) or universal adaption for ED (switchable)

Type	L	B	H
clip-TT/1200	1220	55	40
clip-TT/1500	1525	55	40
clip-TT/1800	1830	55	40



clip-on-OTB/1500  
5800lm 840

$\eta_{LB}$  100 %

Direct 98 %  
Indirect 2 %  
UGR lat. 17,8  
UGR long 18,1

A+



Type	Colour	LED Specification	P <sub>sys</sub> (W)	ED	DALI	
clip-TT-OTB/1200		LED 4600lm 840	31	772 3444 100	772 3446 600	2,2
clip-TT-OTB/1200		LED 4600lm 840	31	772 3444 106	772 3446 606	2,2
clip-TT-OTB/1200		LED 4600lm 840	31	772 3444 104	772 3446 604	2,2
clip-TT-OTB/1500		LED 5800lm 840	39	772 3544 100	772 3546 600	2,8
clip-TT-OTB/1500		LED 5800lm 840	39	772 3544 106	772 3546 606	2,8
clip-TT-OTB/1500		LED 5800lm 840	39	772 3544 104	772 3546 604	2,8
clip-TT-OTB/1800		LED 6900lm 840	47	772 3644 100	772 3646 600	3,3
clip-TT-OTB/1800		LED 6900lm 840	47	772 3644 106	772 3646 606	3,3
clip-TT-OTB/1800		LED 6900lm 840	47	772 3644 104	772 3646 604	3,3

► Please refer to the current data for LED luminaires at [www.lichtwerk.de](http://www.lichtwerk.de)



clip-TT for 3-phase track DPSN

Type	L	B	H
clip-TT/1200	1220	55	40
clip-TT/1500	1525	55	40
clip-TT/1800	1830	55	40



**clip-TT-OG/1500**  
5700lm 840

$\eta_{LB}$  100%

Direct 90 %  
Indirect 10 %  
UGR lat. 25,5  
UGR long 24,9

A+



## clip-TT-OG

IP20

### Housing

Sheet steel, powder-coated traffic white (similar to RAL 9016), black (similar to RAL 9005) or painted white aluminium (similar to RAL 9006).

### Lighting technology -OG

Direct/indirect light distribution.

Diffuse lens optics made of frosted acrylic with lateral transmission.

Rated life time = L80 B10 50.000h.

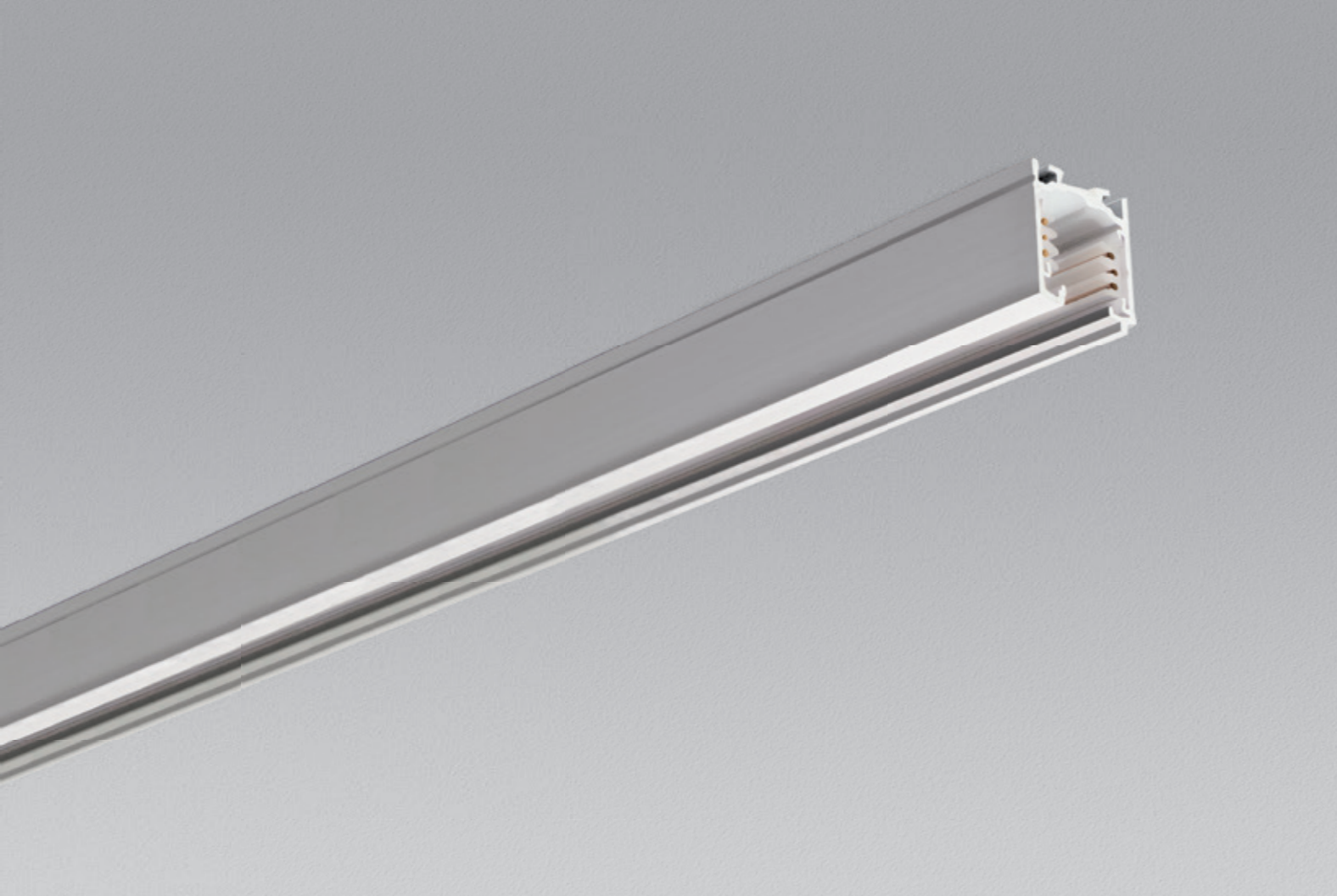
Light colour 830 available on request.

### Miscellaneous

Electrical connection via 3-Phase + DALI track adaption type DPSN (dimnable) or universal adaption for ED (switchable)

Type	Colour	LED Specification	P <sub>sys</sub> (W)	ED	DALI	
clip-TT-OG/1200		LED 4500lm 840	31	772 7444 100	772 7446 600	2,2
clip-TT-OG/1200		LED 4500lm 840	31	772 7444 106	772 7446 606	2,2
clip-TT-OG/1200		LED 4500lm 840	31	772 7444 104	772 7446 604	2,2
clip-TT-OG/1500		LED 5700lm 840	39	772 7544 100	772 7546 600	2,8
clip-TT-OG/1500		LED 5700lm 840	39	772 7544 106	772 7546 606	2,8
clip-TT-OG/1500		LED 5700lm 840	39	772 7544 104	772 7546 604	2,8
clip-TT-OG/1800		LED 6800lm 840	47	772 7644 100	772 7646 600	3,3
clip-TT-OG/1800		LED 6800lm 840	47	772 7644 106	772 7646 606	3,3
clip-TT-OG/1800		LED 6800lm 840	47	772 7644 104	772 7646 604	3,3

► Please refer to the current data for LED luminaires at [www.lichtwerk.de](http://www.lichtwerk.de)

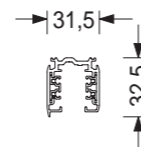


## DPSN

IP20

### 3-phase track + DALI

Extruded aluminium profile, traffic white, black or natural anodized .  
Track can be shortened to any length by using suitable accessories.  
7-pin track, 3x 16A/N/PE + DALI.



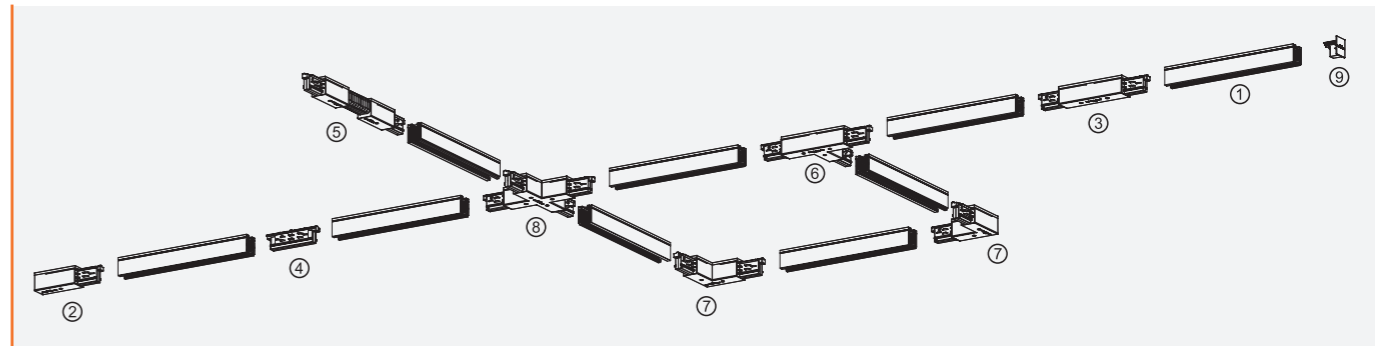
Type	Colour	Material	Details	Item-number	
DPSN-1000		Al	3x 16A + DALI, L=1000mm	324 4100 100	1,2
		Al	3x 16A + DALI, L=1000mm	324 4100 105	1,2
		Al	3x 16A + DALI, L=1000mm	324 4100 104	1,2
DPSN-2000		Al	3x 16A + DALI, L=2000mm	324 4200 100	2,4
		Al	3x 16A + DALI, L=2000mm	324 4200 105	2,4
		Al	3x 16A + DALI, L=2000mm	324 4200 104	2,4
DPSN-3000		Al	3x 16A + DALI, L=3000mm	324 4300 100	3,6
		Al	3x 16A + DALI, L=3000mm	324 4300 105	3,6
		Al	3x 16A + DALI, L=3000mm	324 4300 104	3,6
DPSN-4000		Al	3x 16A + DALI, L=4000mm	324 4400 100	4,4
		Al	3x 16A + DALI, L=4000mm	324 4400 105	4,4
		Al	3x 16A + DALI, L=4000mm	324 4400 104	4,4

## DPSN Accessories

Accessoires for 3-phase track + DALI for creating various structures:

All power supplies and connectors 7-pin; prepared for DALI wiring.  
Mounting material for ceiling or grid ceiling and pendant mounting.  
Adapter for connecting other luminaires to the DPSN track.

DPSN-LBW for adjusting the length of the copper conductor after shortening the track at site.



- ① 3-phase track + DALI DPSN
- ② Power supply DPSN-ESL/ESR
- ③ Power supply, center DPSN-ESM
- ④ Electrical rail connector DPSN-KE
- ⑤ Multiflex connector DPSN-KF
- ⑥ T-rail connector DPSN-KTIL/KTIR
- ⑦ L-rail connector DPSN-KWA/KWI
- ⑧ X-rail connector DPSN-KX
- ⑨ End cap DPSN-EK

Accessories	Type	Colour	Material	Details	Item-number		
	Power supply	DPSN ESL		PA	Power supply for DPSN, left	324 4002 100	0,1
		DPSN ESR		PA	Power supply for DPSN, left	324 4002 104	0,1
		DPSN ESM		PA	Power supply for DPSN, right	324 4001 100	0,1
		DPSN ESM		PA	Power supply for DPSN, right	324 4001 104	0,1
		DPSN ESM		PA	Power supply for DPSN, center	324 4003 100	0,19
		DPSN ESM		PA	Power supply for DPSN, center	324 4003 104	0,19
Rail connector	DPSN KE		PA	Rail connector for DPSN, electrical	324 4004 100	0,05	
			PA	Rail connector for DPSN, electrical	324 4004 104	0,05	
Rail connector	DPSN KM		PA	Rail connector for DPSN, mechanical	324 4005 100	0,05	
			PA	Rail connector for DPSN, mechanical	324 4005 104	0,05	
Rail connector multiflex	DPSN KF		PA	Multiflex connector for DPSN, 0°-360°; horizontal und vertical	324 4006 100	0,24	
			PA	Multiflex connector for DPSN, 0°-360°; horizontal und vertical	324 4006 104	0,24	
End cap	DPSN EK		PA	End cap for DPSN	324 4007 100	0,01	
			PA	End cap for DPSN	324 4007 104	0,01	
Ceiling mounting	DPSN DB		Al	Ceiling mounting for DPSN	324 4008 105	0,02	
Rail connector	DPSN SV		Al	Rail connector for DPSN	324 4012 105	0,03	
Suspension clamp	DPSN AK		Al	Suspension clamp for DPSN	324 4011 105	0,02	
L-rail connector right	DPSN KWI		Mix	Rail connector for DPSN, right	324 4014 100	0,19	
			Mix	Rail connector for DPSN, right	324 4014 104	0,19	
L-rail connector left	DPSN KWA		Mix	Rail connector for DPSN, left	324 4017 100	0,19	
			Mix	Rail connector for DPSN, left	324 4017 104	0,19	
T-rail connector right	DPSN KTIR		Mix	Rail connector for DPSN, right inside	324 4015 100	0,29	
			Mix	Rail connector for DPSN, right inside	324 4015 104	0,29	
T-rail connector left	DPSN KTIL		Mix	Rail connector for DPSN, left inside	324 4018 100	0,29	
			Mix	Rail connector for DPSN, left inside	324 4018 104	0,29	
X-rail connector	DPSN KX		Mix	Rail connector for DPSN	324 4019 100	0,38	
			Mix	Rail connector for DPSN	324 4019 104	0,38	
Mounting 24mm T-rail	DPSN TSB		Mix	24mm T-rail mounting for DPSN	324 4020 100	0,01	
Decorative clamp	DPSN DH		Mix	Ceiling clamp for DPSN	324 4021 100	0,01	
			Mix	Ceiling clamp for DPSN	324 4021 105	0,01	
Wire suspension (Set)	DPSN CS		Mix	Wire suspension Set 5200mm	324 4009 115	0,04	
Cutting tool	DPSN LBW			for adjusting the length of the copper conductors	324 4010 100	0,1	
Adapter	DPSN AET		PC	DPSN-ET-adapter	324 4023 100	0,04	
			PC	DPSN-DALI-adapter	324 4022 100	0,04	



Service Center

Unsere Serviceleistungen

- Fachberatung
- Lieferung
- Geschenke verpacken
- Begleitungen
- Leihkäufe
- Anhängerverleih

Ertennisten

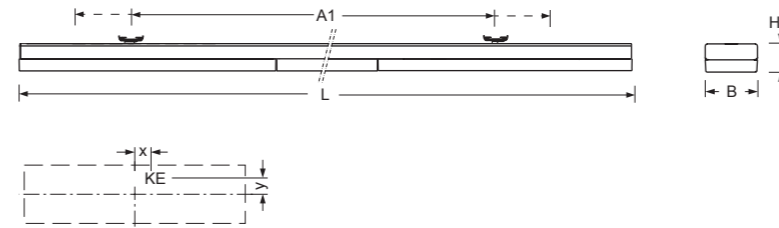
Gart

Übertöpfe

Werbung  
Zantedeschia  
6.49



Type	Ceiling	L	B	H	A1	X	Y
clip-it/1200		1220	55	30	756-1179	0	20
clip-it/1500		1525	55	30	1062-1485	0	20



**clip-it-OB/1500**  
5800lm 840

$\eta_{Lb}$  100 %

Direct 98 %  
Indirect 2 %  
UGR lat. 20,3  
UGR long 20,7

A+



## clip-it-OB

IP20

### Housing

Housing made of sheet steel traffic white (similar to RAL 9016), powder coated. User-defined arrangement at ceilings with visible T-rails (24 mm). Fastening is exclusively carried out by the means of the clips for 24 mm rails (included in the scope of delivery).

### Lighting technology -OB

Direct wide light distribution.  
Translucent lens optics made of acrylic with lateral transmission.  
Rated life time = L80 B10 50.000h.  
Light colour 830 available on request.

### Miscellaneous

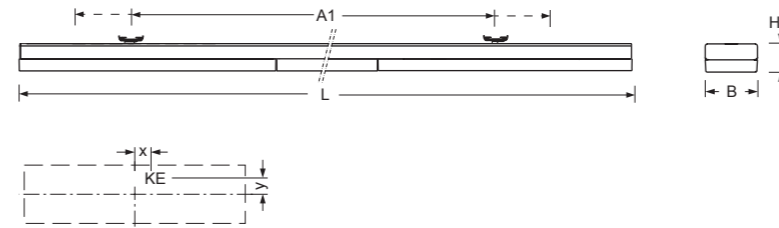
Electrical connection via pre-mounted 5-pole connection cable 2 m (dimnable).

Type	Colour	LED Specification	P <sub>sys</sub> (W)	DALI	
clip-it-OB/1200	<input type="checkbox"/>	LED 4600lm 840	31	769 1446 600	2,2
clip-it-OB/1500	<input type="checkbox"/>	LED 5800lm 840	39	769 1546 600	2,8

► Please refer to the current data for LED luminaires at [www.lichtwerk.de](http://www.lichtwerk.de)



Type	Ceiling	L	B	H	A1	X	Y
clip-it/1200		1220	55	30	756-1179	0	20
clip-it/1500		1525	55	30	1062-1485	0	20



**clip-it-OTB/1500**  
5800lm 840

$\eta_{LB}$  100 %

Direct 98 %  
Indirect 2 %  
UGR lat. 17,8  
UGR long 18,1

A+



## clip-it-OTB

IP20

### Housing

Housing made of sheet steel traffic white (similar to RAL 9016), powder coated. User-defined arrangement at ceilings with visible T-rails (24 mm). Fastening is exclusively carried out by the means of the clips for 24 mm rails (included in the scope of delivery).

### LED Lighting technology -OTB

Direct narrow-wide light distribution.  
Translucent lens optics made of acrylic with lateral transmission.  
Rated life time = L80 B10 50.000h.  
Light colour 830 available on request.

### Miscellaneous

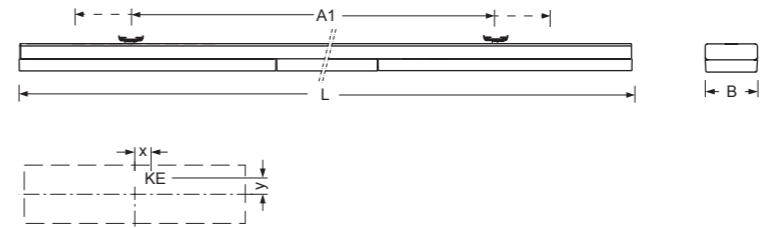
Electrical connection via pre-mounted 5-pole connection cable 2 m (dimnable).

Type	Colour	LED Specification	P <sub>sys</sub> (W)	DALI	
clip-it-OTB/1200	<input type="checkbox"/>	LED 4600lm 840	31	769 3446 600	2,2
clip-it-OTB/1500	<input type="checkbox"/>	LED 5800lm 840	39	769 3546 600	2,8

► Please refer to the current data for LED luminaires at [www.lichtwerk.de](http://www.lichtwerk.de)



Type	Ceiling	L	B	H	A1	X	Y
clip-it/1200		1220	55	30	756-1179	0	20
clip-it/1500		1525	55	30	1062-1485	0	20



**clip-it-OG/1500**  
5700lm 840

$\eta_{LB}$  100%

Direct 90%  
Indirect 10%  
UGR lat. 25,5  
UGR long 24,9

A+



## clip-it-OG

IP20

### Housing

Housing made of sheet steel traffic white (similar to RAL 9016), powder coated. User-defined arrangement at ceilings with visible T-rails (24 mm). Fastening is exclusively carried out by the means of the clips for 24 mm rails (included in the scope of delivery).

### Lighting technology -OG

Direct/indirect light distribution.  
Diffuse lens optics made of frosted acrylic with lateral transmission.  
Rated life time = L80 B10 50.000h.  
Light colour 830 available on request.

### Miscellaneous

Electrical connection via pre-mounted 5-pole connection cable 2 m (dimnable).

Type	Colour	LED Specification	P <sub>sys</sub> (W)	DALI	
clip-it-OG/1200	<input type="checkbox"/>	LED 4500lm 840	31	769 7446 600	2,2
clip-it-OG/1500	<input type="checkbox"/>	LED 5700lm 840	39	769 7546 600	2,8

► Please refer to the current data for LED luminaires at [www.lichtwerk.de](http://www.lichtwerk.de)





# www.lichtwerk.de

lichtwerk GmbH - Hellinger Straße 3 - D 97486 Königsberg

9999 7021 218 1A 500 07/18 LI/Schn. Subject to modification.

## Photoindex

S. 12 - 13    Rendering • lichtwerk GmbH, Königsberg DE  
S. 22 - 23    Bauzentrum RUF, Feuchtwangen DE • lichtwerk GmbH, Königsberg DE  
S. 24 - 29    Rendering • lichtwerk GmbH, Königsberg DE