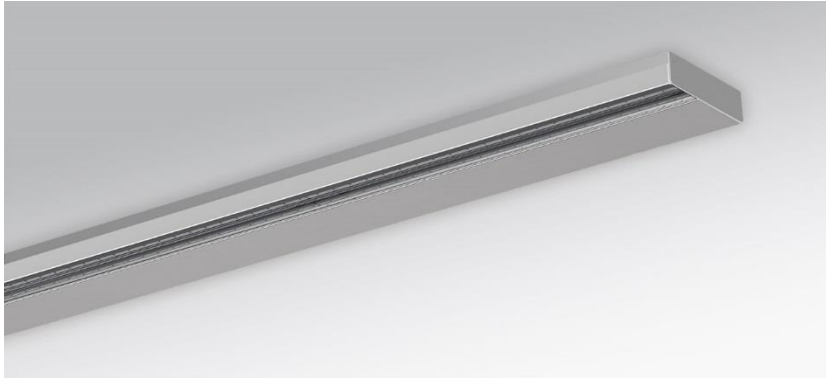
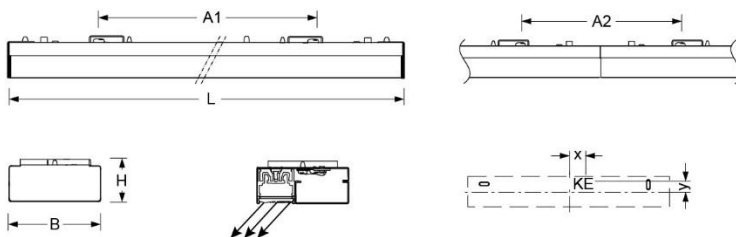


Surface-mounted luminaire. Painted sheet steel. LED support unit made from aluminium profile, natural anodised finish, arrangeable as optically continuous light-lines, through easy removable end-caps. Housing colour white aluminium RAL 9006. Direct asymmetrical distribution. Distribution via Fresnel-lens made from PMMA. Electrical connection via five-pole connection terminal with plug-in contact. With integrated protective earth conductor connection and release button, suitable for rigid and flexible conductors up to 2.5mm². Available accessories: For surface mounting as continuous light-line one through-wiring micro-DV (531 9000 100) per joint is needed. For pendant mounting as single luminaire one ^suspension set micro-SAES (531 0057 105) is required. For pendant mounting as continuous light-line one suspension set micro-SAES (531 0057 105) is needed. Additionally for each joint one suspension micro-SAVS (531 0000 105) and one through-wiring micro-DV (531 9000 100) is necessary. Suspension length 2000mm.



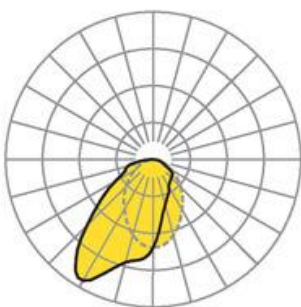
- Article No.: 5313146696
- Housing material: steel
- Housing colour: white aluminium RAL 9006
- Light distribution: direct asymmetrical distribution
- Type of installation: Individual surface mounting, Surface-mounted light run installation
- Certification mark: IP 20, Protection class I, F, MM, Indoor, CE

Dimensions



- Dimensions LxWxH/DxH: 850 x 82 x 32 (mm)
- Mounting distance A1: 700 (mm)
- Mounting distance A2: 148 (mm)
- Weight (net): 2 (kg)
- Cable entry KE X/Y: 95 (mm) / 10 (mm)

Lighting/Electrical



- Placement: LED, Colour rendering/Light colour CRI ≥ 80 / 4000K
- Direct/Indirect: 100 % / 0 %
- Luminaire luminous flux: 2900 (lm)
- LED service life: 50000h L80/B10 (Tq 25°C)
- Luminaire luminous efficacy: 114 (lm/W)
- System output: 25 (W)
- Controller: Electronic driver DALI (1 pcs.)
- Mains voltage max.: 230 V / 50 Hz
- Energy efficiency class: C