

lichtwerk

inspired by light

# lichtwerk



SRAM, Schweinfurt @ lichtwerk





## Flexible

The all-round inclusive package is our standard when it comes to defining our range of services. lichtwerk reacts flexibly to individual customer requirements.

## Emotional

Light creates emotions and only when these satisfy the client's requirements does the lighting achieve the enthusiasm, which we set as our goal.

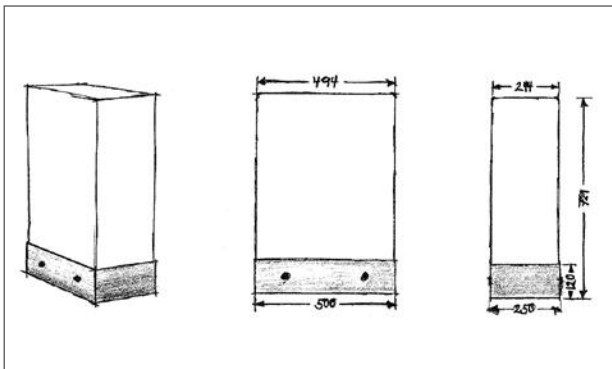
## Creative

Due to the heterogeneous customer structure and changing challenges, lichtwerk is accustomed to always thinking new, innovatively and creatively.



## Individual luminaires for attractive project solutions

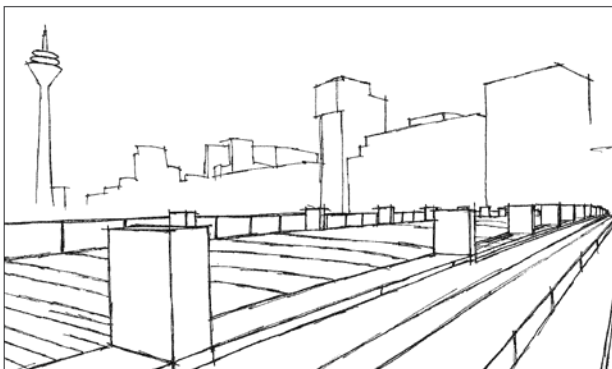
Away from standard luminaires, we develop individual project luminaires, specifically for your lighting needs. In addition to our standard colours, a wide range of RAL colours is available for our high-quality matt textured paint. No wishes remain unfulfilled in the colour selection for your luminaires.



## From the idea to the product

Inspired by light - Light is the passion, which inspires us over and over again. This enthusiasm makes us creative, lets us go outside the box and exploit the freedom given to its limits.

The flexibility in thinking, which characterizes our corporate philosophy, gives us the pragmatism for which we are appreciated. The key to solving these challenging tasks are flexibility and pragmatism.



Sophisticated projects often can't be realized with standard catalogue products, therefore custom-made solutions are needed.

To meet the requirements of these projects, creativity, high technical competence and an uncompromising customer orientation in consulting, planning and production is necessary - Therefore we have a company orientation, which makes it necessary to examine our own thinking and acting over and over again.



Medienhafen, Düsseldorf @ Tom Reindel, Düsseldorf

## Artisan of light

We are such an artisan of light, able to act with flexibility, sense of lighting by intuition and conceptual thinking of projects, that clearly stand out from the mass market.





## Sustainability - lighting for the future



With our efficient technologies, we set a clear signal on the subject of sustainability.

While sustainability used to mean primarily environmental protection, sustainable action today also takes economic and social aspects into account. Modern lighting technology makes a valuable contribution to this:

- efficient light sources,
- optimized luminaires and
- electronic control.

Our luminaire components conserve natural resources and are largely recyclable. At the same time, modern lighting technology makes visual tasks easier and promotes people's sense of well-being, for example with Human Centric Lighting concepts (HCL). A lighting control system ensures that light only switches on in sufficient quantity when it is required.

## We are there for you

CONTACT Lighting planning



It all starts with the consultation during the project planning phase. Requirements are defined, framework conditions are established, and a selection is made.

Only when everything is perfectly coordinated the planned effect will be achieved. lichtwerk deals with the subject of lighting in a very emotional way and cultivates a similar relationship with its customers.

Together with you, we develop your individual project solution, so that the lighting achieves the enthusiasm that we set ourselves as our goal.

From planning to implementation, we focus on close cooperation with the client and the executing companies on site.





# Table structure

The tabular structure enables an overview of the essential features.

Type	LED Specification	Item-number	the last digit of the article number indicates the housing colour					Luminaire net weight (without packaging)
Designation of the luminaire	Luminous flux lumen (lm) Colour rendering index RA Colour temperature Kelvin (K)	543 3044 10...	→	→	→	→	→	→
Type	LED Specification	P <sub>sys</sub> (W)	Driver	Item-number	Colour	Colour	Colour	kg
Sample luminaire	LED 2400lm 840 LB	20	ET	543 3044 10...	■ ...5	□ ...1	■ ...4	3
	LED 4500lm 840 LB	41	DALI	543 3144 10...	■ ...5	□ ...1	■ ...4	3

P<sub>sys</sub> | Lighting system performance

## Driver

ET | Electronic Driver,  
non dimmable

DALI | Electronic Driver,  
DALI, dimmable

DALI DT8 | Electronic Driver,  
DALI, dimmable,  
Change of light colour

Tast dim | dimmable via push button

NL-B | Emergency light single  
battery

## Colour code/colour

■ | aluminium natural anodized

□ | traffic white (similar RAL 9016)

■ | withe-aluminium (similar RAL 9006)

■ | deep black (similar RAL 9017)

■ | silver grey

■ | stainless steel

■ | grit grey

cr | chrome

si | silver matt

sig | silver gloss

tc | translucent

cl | clear

# NEW

Please refer to the current data and prices for LED luminaires at [www.lichtwerk.de](http://www.lichtwerk.de)



Because of the dynamics in the technical development especially in the field of LED modules and their drivers, the information in this paper can only be a snapshot of the current state and are therefore legally not binding. Please refer to our web site for current product specifications.

The QR code on our product pages leads you directly to the respective product family.

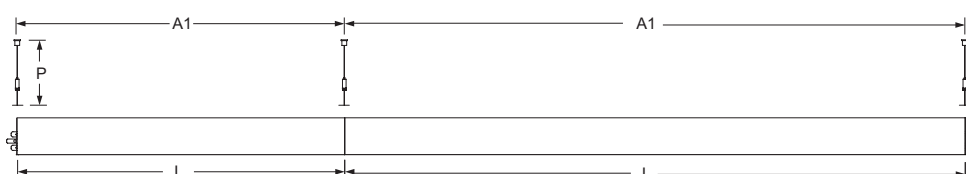
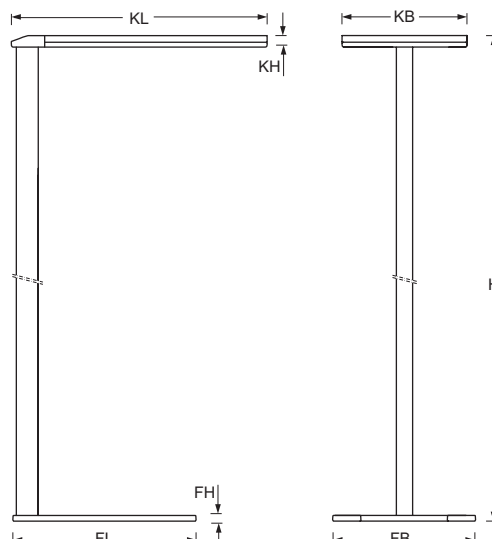
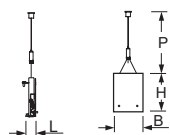
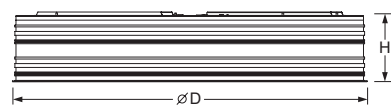
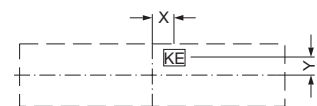
EXCLUSION OF LIABILITY

Illustrations, dimensions and weights in our catalogues, price lists and quotations are non-binding. Subject to technical changes, errors and color deviations. All luminaires have been designed for 230V 50Hz mains connection and ambient conditions according to DIN EN 60598 unless otherwise stated, and are supplied without lamps unless otherwise stated.

Most of the indications with regard to certifications are presented in our catalogue in a general form. Verification with regard to products can be easily carried out on our website.

We point out that the orderer recognises our delivery and payment conditions unless he/she objects in writing when sending his/her order.

Registration number: DE 40859830



## Definition of measurement table variants

L | Length

□L | Length/Width for square luminaires

L2 | Additional length

B | Width

H | Height

ØD | Diameter

FL | Length of luminaire base

FB | Width of luminaire base

FD | Diameter of luminaire base

T | Depth

KE | Electrical feed in

KL | Length of luminaire head or ballast box

KB | Width of luminaire head or ballast box

KH | Height of luminaire head or ballast box

KD | Diameter of luminaire head or ballast box

A1 | Fixing distance in case of single mounting

A2 | Fixing distance between the luminaires in case of light run mounting

X | Distance from centre of the luminaire to the electrical feed in (x direction = length)

Y | Distance from centre of the luminaire to the electrical feed in (y direction = width)

SL | Length of cut out for recessed luminaires

SB | Width of cut out for recessed luminaires

SD | Diameter of cut out for recessed luminaires

e | Minimum necessary depth for luminaire mounting

ML | Modul (axis) Length

MB | Modul (axis) Width

P | Wire suspension

P min/max | Min./Max. length wire suspension

DS min/max | Min./Max. ceiling thickness in case of cut out ceilings



for ceilings with visible T-rails



for cut-out ceilings

Recessed luminaires

Surface mounted luminaires

Pendant luminaires

Phase-track and luminaires

Lighting systems

Downlights

Wall luminaires  
Standing luminaires

Light furniture

Glass luminaires

Licht control

Information









# LIGHT FURNITURE

Medienhafen, Düsseldorf @ Tom Reindel



Light furniture

light qube

440





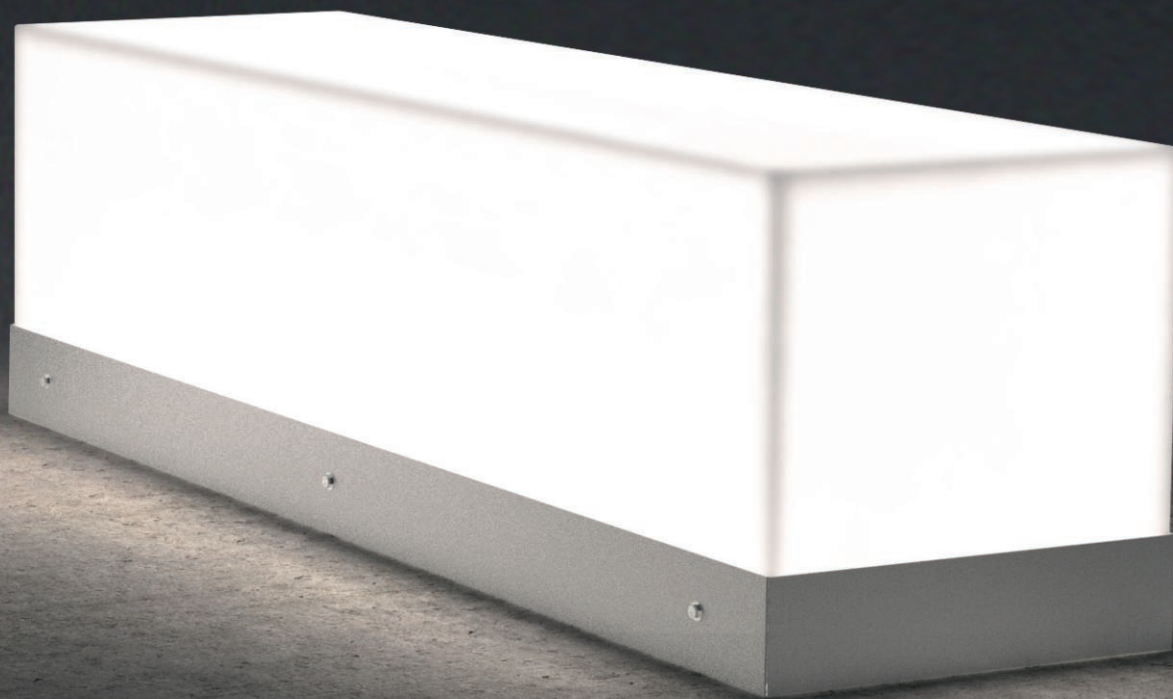
light seat

444



light bench

448





## light qube



### Housing

Base part with clamping mechanism made of galvanised or stainless steel. Inner mounting plate for taking up the electrical components made of stainless steel. Cover made of massive frosted acrylic glass with welded edges. Suitable for use in public space.

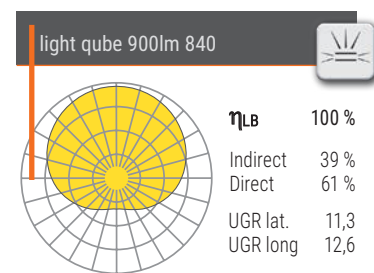
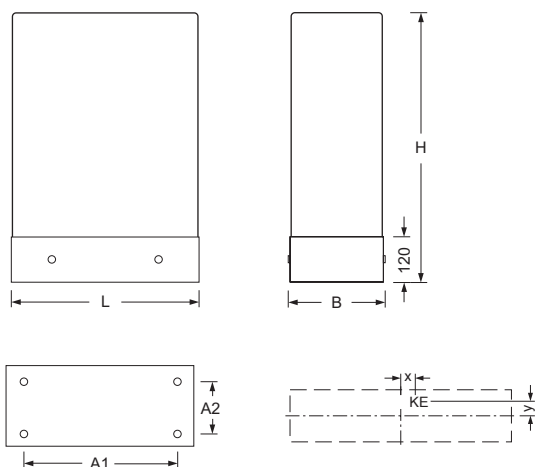
### Lighting technology

Modular LED with wide distributing lens optics for homogeneous appearance. Rated life time = L70 B50 50.000h.

### Miscellaneous

Electrical connection via 5-pole plugin connection terminal; with integrated earth conductor connection and unlocking button, suitable for rigid and flexible cables up to 2.5mm<sup>2</sup>. Protected by internal weatherproof junction box.

Type	L	B	H	A1	A2	X	Y
light qube	500	250	720	300	160	175	0



Please refer to the current data and prices for LED luminaires at [www.lichtwerk.de](http://www.lichtwerk.de)



Type	Version	LED Specification	P <sub>sys</sub> (W)	Driver	Item-Number	Colour	kg
light qube	galvanized	LED 900lm 840	18	ED	844 0014 100	<input type="checkbox"/>	28,4
	stainless steel V2A	LED 900lm 840	18	ED	844 0014 120	<input type="checkbox"/>	28,4















## light seat



### Housing

Base part with clamping mechanism made of galvanised or stainless steel. Inner mounting plate for taking up the electrical components made of stainless steel. Cover made of massive frosted acrylic glass with welded edges. Suitable for use in public space.

### Lighting technology

Modular LED with wide distributing lens optics for homogeneous appearance. Rated life time = L70 B50 50.000h.

### Lighting technology RGBW

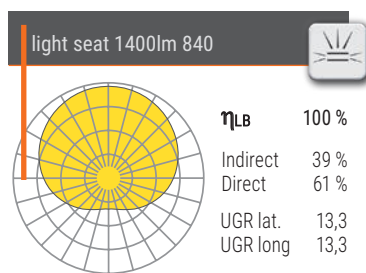
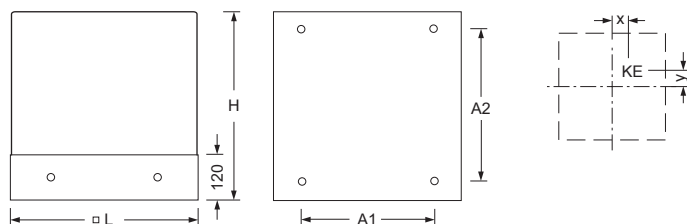
Modular RGBW LED with wide distributing lens optics for homogeneous appearance. Electronic driver with 4 separate DALI channels. Rated life time = L70 B50 50.000h.

### Miscellaneous

Electrical connection via 5-pole plugin connection terminal; with integrated earth conductor connection and unlocking button, suitable for rigid and flexible cables up to 2.5mm<sup>2</sup>. Protected by internal weatherproof junction box.



Type	□L	H	A1	A2	X	Y
light seat	500	500	260	396	170	130



Please refer to the current data and prices for LED luminaires at [www.lichtwerk.de](http://www.lichtwerk.de)



Type	Version	LED Specification	P <sub>sys</sub> (W)	Driver	Item-Number	Colour	kg
light seat	galvanized	LED 1400lm 840	24	ED	847 0014 100	<input type="checkbox"/>	36,6
	stainless steel V2A	LED 1400lm 840	24	ED	847 0014 120	<input type="checkbox"/>	36,6
light seat RGBW	galvanized	LED RGBW	31	DALI	847 0026 600	<input type="checkbox"/>	36,6
	stainless steel V2A	LED RGBW	31	DALI	847 0026 620	<input type="checkbox"/>	36,6



VIEHLER·WASSER·WELT











## light bench



### Housing

Base part with clamping mechanism made of galvanised or stainless steel. Inner mounting plate for taking up the electrical components made of stainless steel. Cover made of massive frosted acrylic glass with welded edges. Suitable for use in public space.

### Lighting technology

Modular LED with wide distributing lens optics for homogeneous appearance.

Rated life time = L70 B50 50.000h.

### Lighting technology RGBW

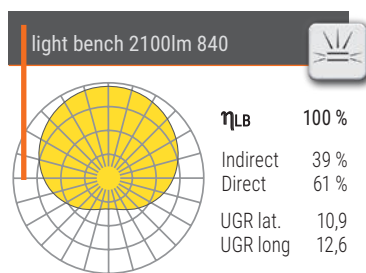
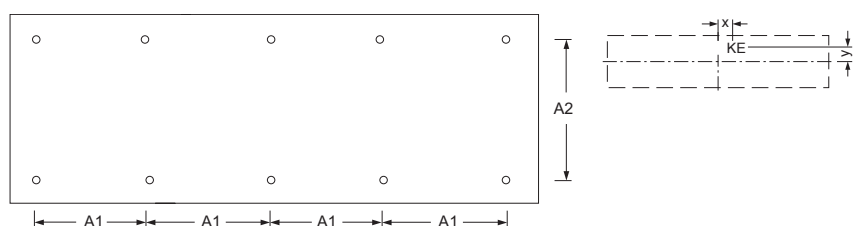
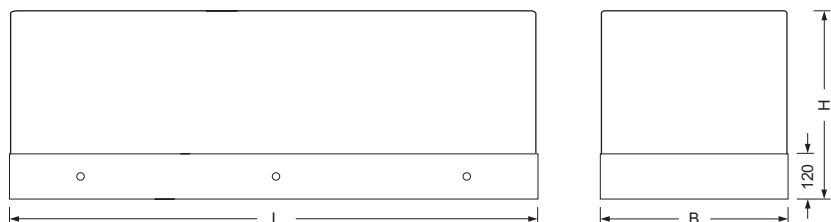
Modular RGBW LED with wide distributing lens optics for homogeneous appearance. Electronic driver with 4 separate DALI channels.

Rated life time = L70 B50 50.000h.

### Miscellaneous

Electrical connection via 5-pole plugin connection terminal; with integrated earth conductor connection and unlocking button, suitable for rigid and flexible cables up to 2.5mm<sup>2</sup>. Protected by internal weatherproof junction box.

Type	L	B	H	A1	A2	X	Y
light bench	1700	500	500	366	396	775	-130



Please refer to the current data and prices for LED luminaires at [www.lichtwerk.de](http://www.lichtwerk.de)



Type	Version	LED Specification	P <sub>sys</sub> (W)	Driver	Item-Number	Colour	kg
light bench	galvanized	LED 2100lm 840	37	ED	848 0014 100	<input type="checkbox"/>	86,2
	stainless steel V2A	LED 2100lm 840	37	ED	848 0014 120	<input type="checkbox"/>	86,2
light bench RGBW	galvanized	LED RGBW	53	DALI	848 0026 600	<input type="checkbox"/>	86,2
	stainless steel V2A	LED RGBW	53	DALI	848 0026 620	<input type="checkbox"/>	86,2











# Contacts

## HEAD OFFICE KOENIGSBERG



### SALES

T +49 9525 9827 0  
info@lichtwerk.de

### TECHNICAL SERVICE

T +49 9525 9827 1  
lichtplanung@lichtwerk.de

## SALES INTERNATIONAL/ SALES MANAGER



### Torsten Kießlich-Köcher

T +49 9525 89450  
F +49 9525 89444  
M +49 172 8682620  
torsten.kiesslich@lichtwerk.de



Australia, Bulgaria, Estonia, Greece, India,  
Latvia, Lithuania, Kanada, Litauen, New  
Zealand, Portugal, Romania, Slovenia, Spain,  
Ukraine, United Kingdom, USA, Zypern

### Stefan Nestmann

T +49 9525 89438  
F +49 9525 89444  
M +49 172 8670054  
stefan.nestmann@lichtwerk.de



Netherlands

### Reinhold Pfister

T +49 9525 89451  
F +49 9525 89444  
M +49 172 8670050  
reinhold.pfister@lichtwerk.de



Austria, Switzerland, Italy, Iceland, Serbia,  
Croatia, Czech Republic, Slovakia, Hungary

### Daniel Hau

T +49 9525 89657  
F +49 9525 89444  
M +49 160 7177734  
daniel.hau@lichtwerk.de



France, Luxembourg, Belgium, Denmark,  
Norway, Sweden, Finland, Poland, Middle East

## GERMAN SALES FORCE

### 01 MECKLENBURG-VORPOMMERN

Gritt Schlemminger  
M +49 151 14733968  
gritt.schlemminger@lichtwerk.de



### 02 HAMBURG, SCHLESWIG-HOLSTEIN

Michael Brott  
M +49 160 7177747  
michael.brott@lichtwerk.de



### 03 BREMEN

Andre Altmann  
M +49 160 7177746  
andre.altmann@lichtwerk.de



### 04 HANNOVER

Ralf Reichel  
M +49 160 7177738  
ralf.reichel@lichtwerk.de



### 05 SACHSEN

Jörg Irmisch  
M +49 172 8670062  
joerg.irmisch@lichtwerk.de



Jürgen Bergmann  
M +49 172 8670049  
juergen.bergmann@lichtwerk.de



### 06 THÜRINGEN

Jens Schlothauer  
M +49 151 14733955  
jens.schlothauer@lichtwerk.de



### 07 HESSEN

Jörg Wenderoth  
Industrievertretung  
Kirchweg 1  
34225 Baunatal  
T +49 5601 9999040  
info@wenderoth-iv.de



### 08 NORDRHEIN-WESTFALEN

Dominic Pauli  
M +49 160 7177737  
dominic.pauli@lichtwerk.de







**Daniel Pangritz**  
M +49 160 2022163  
daniel.pangritz@lichtwerk.de



**Marcel Hilke**  
M +49 160 7177745  
marcel.hilke@lichtwerk.de



## 09 RHEINLAND-PFALZ

**Bernd Oedekoven GmbH**  
Industrievertretung  
Rudolf-Diesel-Straße 11  
56220 Urmitz  
T +49 2630 96350  
info@oedekovengmbh.de



## 10 RHEIN-MAIN

**Markus Schimmer**  
M +49 151 14733980  
markus.schimmer@lichtwerk.de



## 11 NORDBAYERN

**Peter Gröger**  
M +49 172 8670045  
peter.groeger@lichtwerk.de



**Stephan Althaus**  
M +49 160 7177731  
stephan.althaus@lichtwerk.de



## 12 BAYERN-MITTE

**Bernhard Zirkelbach**  
M +49 172 8670047  
bernhard.zirkelbach@lichtwerk.de



## 13 SÜDBAYERN

**Holger Steinbauer**  
M +49 160 7177739  
holger.steinbauer@lichtwerk.de



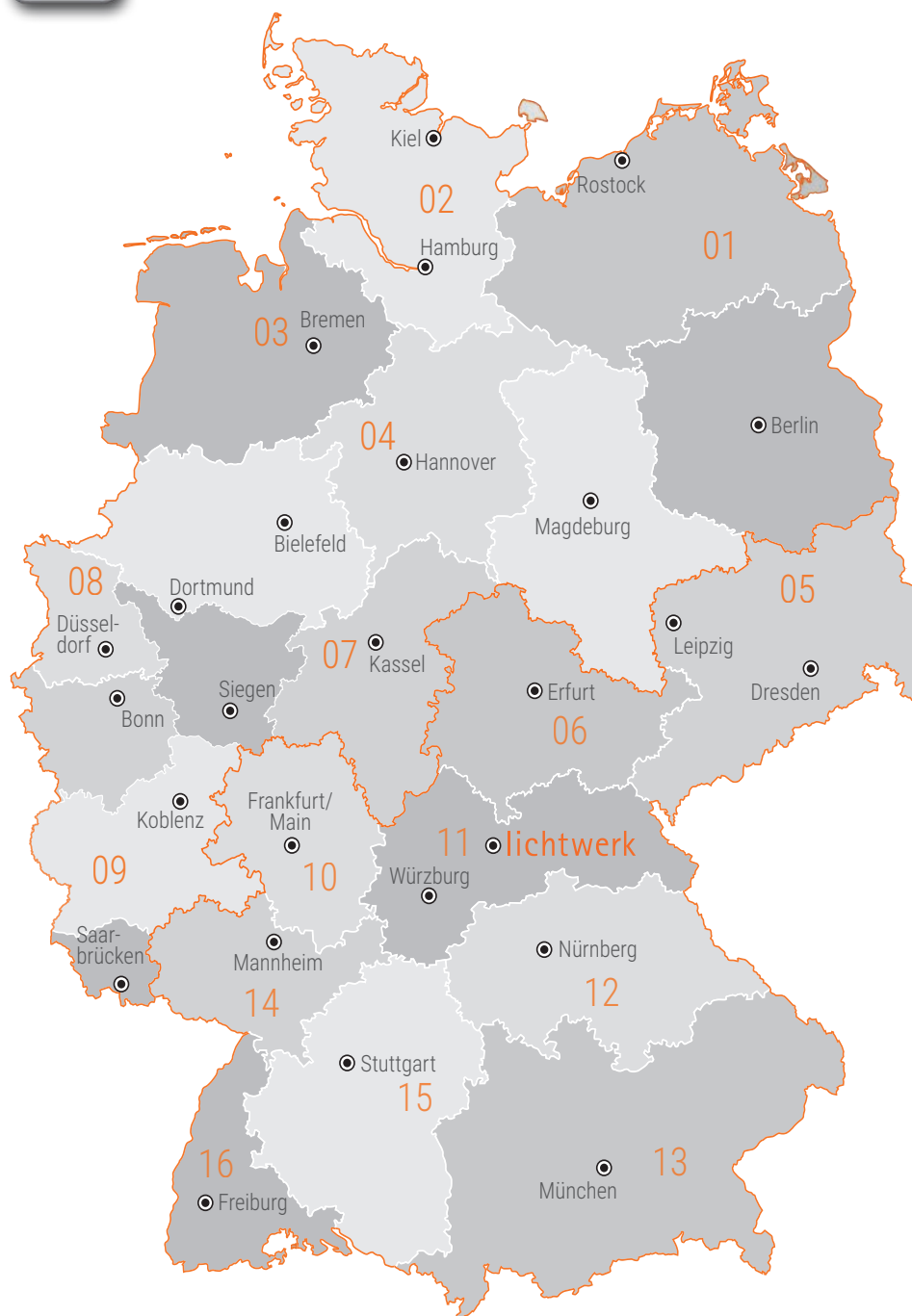
## 14 NORDBADEN

**Steffen Leuschel**  
M +49 160 7177740  
steffen.leuschel@lichtwerk.de



## 15 STUTT GART

**Frank Bossert**  
Industrievertretung  
Hofenerweg 17  
71686 Remseck  
T +49 711 57766960  
info@bossert-weissinger.de



## 16 SÜDBADEN

**Fred Abel GmbH**  
Industrievertretung  
Im Ebnet 1  
79238 Ehrenkirchen  
T +49 7633 95010  
info@fredabel.de

**lichtwerk**  
inspired by light

lichtwerk GmbH  
Hellinger Straße 3  
D 97486 Königsberg









SRAM, Schweinfurt @ lichtwerk

inspired by light



[www.lichtwerk.de](http://www.lichtwerk.de)