

lichtwerk

inspired by light

lichtwerk



SRAM, Schweinfurt @ lichtwerk



Flexible

The all-round inclusive package is our standard when it comes to defining our range of services. lichtwerk reacts flexibly to individual customer requirements.

Emotional

Light creates emotions and only when these satisfy the client's requirements does the lighting achieve the enthusiasm, which we set as our goal.

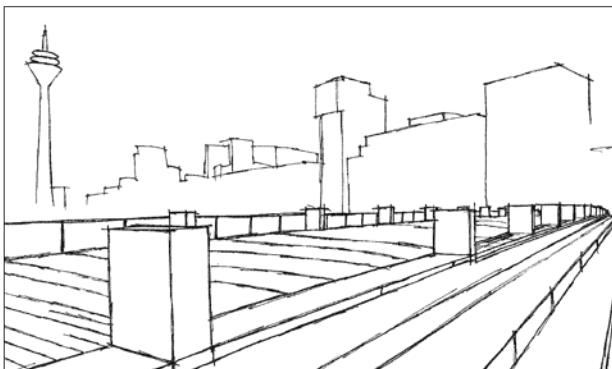
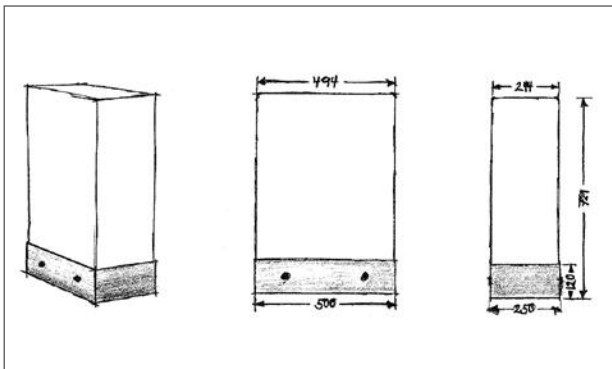
Creative

Due to the heterogeneous customer structure and changing challenges, lichtwerk is accustomed to always thinking new, innovatively and creatively.



Individual luminaires for attractive project solutions

Away from standard luminaires, we develop individual project luminaires, specifically for your lighting needs. In addition to our standard colours, a wide range of RAL colours is available for our high-quality matt textured paint. No wishes remain unfulfilled in the colour selection for your luminaires.



Medienhafen, Düsseldorf @ Tom Reindel, Düsseldorf

From the idea to the product

Inspired by light - Light is the passion, which inspires us over and over again. This enthusiasm makes us creative, lets us go outside the box and exploit the freedom given to its limits.

The flexibility in thinking, which characterizes our corporate philosophy, gives us the pragmatism for which we are appreciated. The key to solving these challenging tasks are flexibility and pragmatism.

Sophisticated projects often can't be realized with standard catalogue products, therefore custom-made solutions are needed.

To meet the requirements of these projects, creativity, high technical competence and an uncompromising customer orientation in consulting, planning and production is necessary - Therefore we have a company orientation, which makes it necessary to examine our own thinking and acting over and over again.

Artisan of light

We are such an artisan of light, able to act with flexibility, sense of lighting by intuition and conceptual thinking of projects, that clearly stand out from the mass market.



Sustainability - lighting for the future



With our efficient technologies, we set a clear signal on the subject of sustainability.

While sustainability used to mean primarily environmental protection, sustainable action today also takes economic and social aspects into account. Modern lighting technology makes a valuable contribution to this:

- efficient light sources,
- optimized luminaires and
- electronic control.

Our luminaire components conserve natural resources and are largely recyclable. At the same time, modern lighting technology makes visual tasks easier and promotes people's sense of well-being, for example with Human Centric Lighting concepts (HCL). A lighting control system ensures that light only switches on in sufficient quantity when it is required.

We are there for you

CONTACT Lighting planning



It all starts with the consultation during the project planning phase. Requirements are defined, framework conditions are established, and a selection is made.

Only when everything is perfectly coordinated the planned effect will be achieved. lichtwerk deals with the subject of lighting in a very emotional way and cultivates a similar relationship with its customers.

Together with you, we develop your individual project solution, so that the lighting achieves the enthusiasm that we set ourselves as our goal.

From planning to implementation, we focus on close cooperation with the client and the executing companies on site.





Table structure

The tabular structure enables an overview of the essential features.

Type	LED Specification	Item-number	the last digit of the article number indicates the housing colour					Luminaire net weight (without packaging)
Designation of the luminaire	Luminous flux lumen (lm) Colour rendering index RA Colour temperature Kelvin (K)	543 3044 10...	→	→	→	→	→	→
Type	LED Specification	P _{sys} (W)	Driver	Item-number	Colour	Colour	Colour	kg
Sample luminaire	LED 2400lm 840 LB	20	ET	543 3044 10...	■ ...5	□ ...1	■ ...4	3
	LED 4500lm 840 LB	41	DALI	543 3144 10...	■ ...5	□ ...1	■ ...4	3

P_{sys} | Lighting system performance

Driver

- ET | Electronic Driver, non dimmable
- DALI | Electronic Driver, DALI, dimmable
- DALI DT8 | Electronic Driver, DALI, dimmable, Change of light colour
- Tast dim | dimmable via push button
- NL-B | Emergency light single battery

Colour code/colour

- | aluminium natural anodized
- | traffic white (similar RAL 9016)
- | withe-aluminium (similar RAL 9006)
- | deep black (similar RAL 9017)
- | silver grey
- | stainless steel
- | grit grey
- cr | chrome
- si | silver matt
- sig | silver gloss
- tc | translucent
- cl | clear

NEW

Please refer to the current data and prices for LED luminaires at www.lichtwerk.de



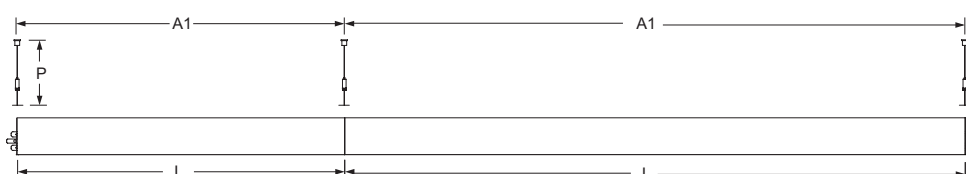
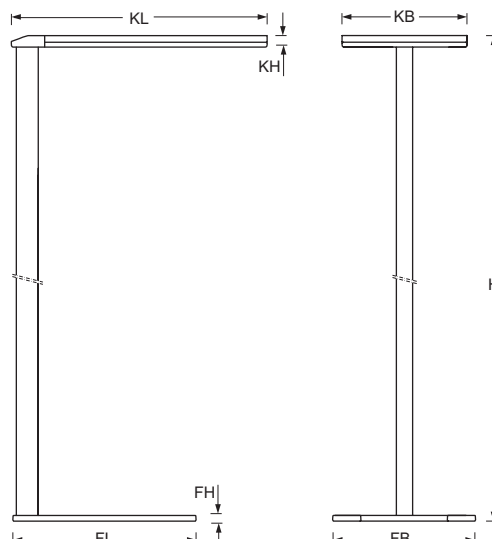
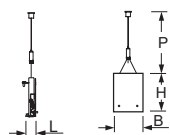
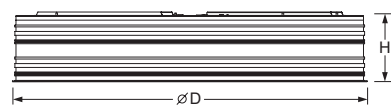
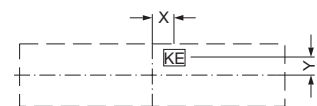
Because of the dynamics in the technical development especially in the field of LED modules and their drivers, the information in this paper can only be a snapshot of the current state and are therefore legally not binding. Please refer to our web site for current product specifications. The QR code on our product pages leads you directly to the respective product family.

EXCLUSION OF LIABILITY

Illustrations, dimensions and weights in our catalogues, price lists and quotations are non-binding. Subject to technical changes, errors and color deviations. All luminaires have been designed for 230V 50Hz mains connection and ambient conditions according to DIN EN 60598 unless otherwise stated, and are supplied without lamps unless otherwise stated.

Most of the indications with regard to certifications are presented in our catalogue in a general form. Verification with regard to products can be easily carried out on our website. We point out that the orderer recognises our delivery and payment conditions unless he/she objects in writing when sending his/her order.

Registration number: DE 40859830



Definition of measurement table variants

L | Length

□L | Length/Width for square luminaires

L2 | Additional length

B | Width

H | Height

ØD | Diameter

FL | Length of luminaire base

FB | Width of luminaire base

FD | Diameter of luminaire base

T | Depth

KE | Electrical feed in

KL | Length of luminaire head or ballast box

KB | Width of luminaire head or ballast box

KH | Height of luminaire head or ballast box

KD | Diameter of luminaire head or ballast box

A1 | Fixing distance in case of single mounting

A2 | Fixing distance between the luminaires in case of light run mounting

X | Distance from centre of the luminaire to the electrical feed in (x direction = length)

Y | Distance from centre of the luminaire to the electrical feed in (y direction = width)

SL | Length of cut out for recessed luminaires

SB | Width of cut out for recessed luminaires

SD | Diameter of cut out for recessed luminaires

e | Minimum necessary depth for luminaire mounting

ML | Modul (axis) Length

MB | Modul (axis) Width

P | Wire suspension

P min/max | Min./Max. length wire suspension

DS min/max | Min./Max. ceiling thickness in case of cut out ceilings



for ceilings with visible T-rails



for cut-out ceilings

Recessed luminaires

Surface mounted luminaires

Pendant luminaires

Phase-track and luminaires

Lighting systems

Downlights

Wall luminaires
Standing luminaires

Light furniture

Glass luminaires

Licht control

Information





WALL-/STANDING LUMINAIRES

Birke Elektroanlagen GmbH, Wunsiedel @ lichtwerk



Wall-/Standing luminaires



Wall luminaires from other chapters



Surface mounted luminaires

galant-pro-GPAK 118



galant-pro-GAKPC 122



Glass luminaires

syrma-W 456



serio-WIFA 424



rason-RSWIG 428



rason-RSSIMP 432



drop 126



scala-AG 136



linar image II-AG 144



corona-A 462

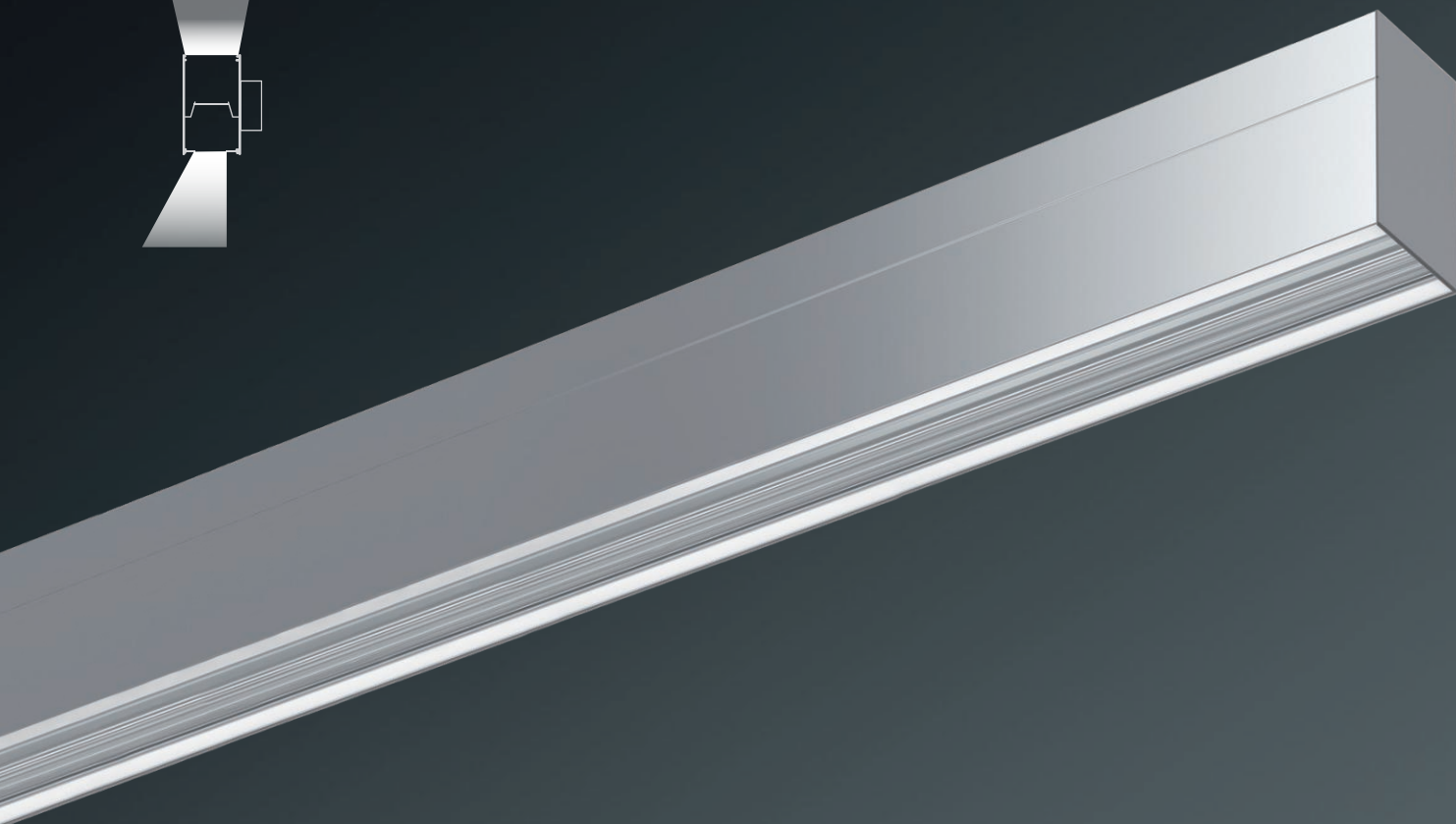


puck-A 468



dyski-A 474





serio-WIFA



Housing

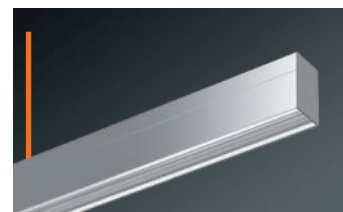
Aluminium profile, natural anodised. Face ends sheet steel, painted white aluminium. Also available in textured paint traffic white (similar to RAL 9016) or deep black (similar to RAL 9005). Other housing colours on request.

Lighting technology -WIFA

Direct/indirect distribution, DALI variant separately dimmable.
Direct asymmetric light distribution via Fresnel lens made from acrylic.
Indirect share via white-opal, satin-finished acrylic profile.
Rated life time = L80 B10 50.000h.
Light colour: 4000K. Optional: 3000K. Other light colours on request.

Miscellaneous

Electrical connection via 3-pole, for dimmable luminaires 5-pole connection terminal with plug-in contacts; with integrated protective earth conductor connection and release button, suitable for rigid and flexible conductors up to 2.5mm².



■ natural anodized

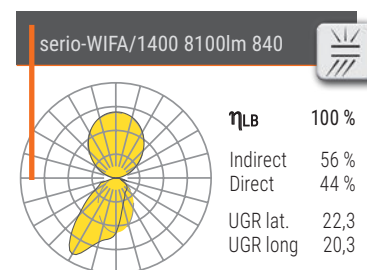
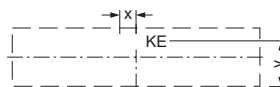
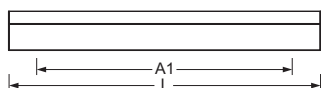


□ traffic white



■ deep black

Type	L	B	T	H	A1	X	X
serio-WIFA/0500	567	61	86	106	330	238	72
serio-WIFA/0800	847	61	86	106	610	0	72
serio-WIFA/1100	1127	61	86	106	890	0	72
serio-WIFA/1400	1407	61	86	106	1170	0	72
serio-WIFA/2200	2247	61	86	106	2010	0	72
serio-WIFA/2800	2807	61	86	106	2570	0	72



Please refer to the current data and prices for LED luminaires at www.lichtwerk.de



Type	LED Specification	P _{sys} (W)	Driver	Item-Number	Colour	Colour	Colour	kg
serio-WIFA/0500	LED 3200lm 840	27	ED	443 2144 18...	...0	...1	...4	3,0
	LED 3200lm 840	27	DALI	443 2146 68...	...0	...1	...4	3,0
serio-WIFA/0800	LED 4700lm 840	40	ED	443 3144 18...	...0	...1	...4	4,2
	LED 4700lm 840	40	DALI	443 3146 68...	...0	...1	...4	4,2
serio-WIFA/1100	LED 6300lm 840	54	ED	443 4144 18...	...0	...1	...4	5,7
	LED 6300lm 840	54	DALI	443 4146 68...	...0	...1	...4	5,7
serio-WIFA/1400	LED 8100lm 840	69	ED	443 5144 18...	...0	...1	...4	6,9
	LED 8100lm 840	69	DALI	443 5146 68...	...0	...1	...4	6,9
serio-WIFA/2200	LED 12600lm 840	108	ED	443 8144 18...	...0	...1	...4	11,3
	LED 12600lm 840	108	DALI	443 8146 68...	...0	...1	...4	11,3
serio-WIFA/2800	LED 16200lm 840	139	ED	443 0144 18...	...0	...1	...4	13,0
	LED 16200lm 840	139	DALI	443 0146 68...	...0	...1	...4	13,0









rason-RSWIG



Housing

Ultra-flat luminaire housing, aluminium profile, natural anodised, visible construction height 30mm; with continuous longitudinal groove, rounded towards the front of the luminaire.

Suitable for wall- and ceiling-mounting.

Lighting technology -RSWIG

Direct/indirect distribution.

Homogeneous illumination by satinised special acrylic panel, with high transmission; homogeneous light emission through lateral LED light coupling and fitted aluminium reflector in a highly reflective white coating, with micro-perforation for a moderate wall illumination.

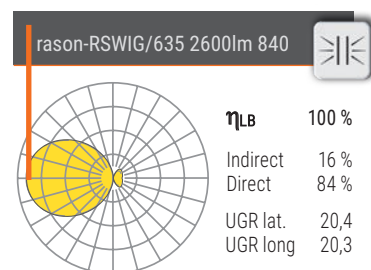
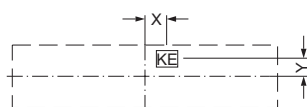
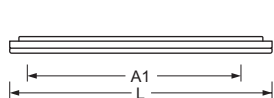
Rated life time = L80 B10 50.000h.

Light colour: 4000K. Optional: 3000K. Other light colours on request.

Miscellaneous

Electrical connection via three-pole or for dimmable luminaires, five-pole feed-in and connection terminal with plug-in technology, with integrated protective earth connection and unlocking button, suitable for rigid and flexible cables up to 2,5mm².





Type	L	B	H	A1	X	Y
rason-RSWIG/355	355	330	42	265	0	0
rason-RSWIG/635	635	330	42	548	0	0



■ rason-RSWIG/355

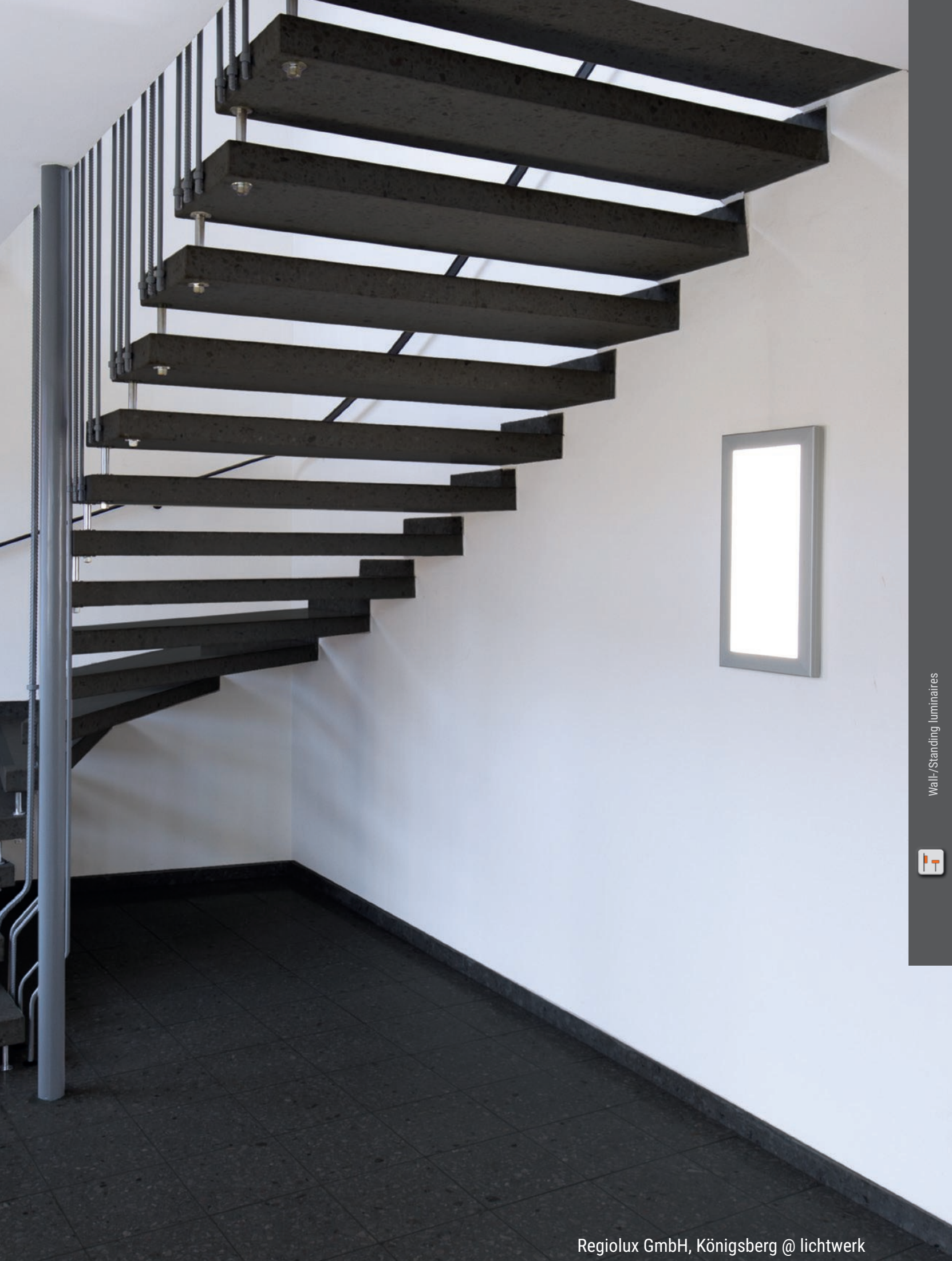
Please refer to the current data and prices for LED luminaires at www.lichtwerk.de



Type	LED Specification	P _{sys} (W)	Driver	Item-Number	Colour	
rason-RSWIG/355	LED 1300lm 840	12	ET	460 1034 115		2,4
rason-RSWIG/635	LED 2600lm 840	24	ET	461 1044 115		4,2
	LED 2600lm 840	24	DALI	461 1046 615		4,2









rason-RSSIMP



Housing

Standing luminaire with ultra-flat head. Luminaire head and column made of an extruded aluminium profile, natural anodized. Black switch. Stable, sand-cast base coloured black. Base coloured white aluminium available on request.

Lighting technology -RSSIMP

Direct/indirect light distribution.

Direct ratio glare control via PMMA microprism pane. Indirect ratio via special acrylic pane.

For VDU workstations $65^\circ < 3000 \text{ cd/m}^2$, $\text{UGR} \leq 16$ according to DIN EN 12464-1.

Rated life time = L80 B10 50.000h.

Light colour: 4000K. Optional: 3000K. Other light colours on request.

Tast dim

Direct and indirect ratio dimmable separately via integrated push button, 230V.

DALI M5S5

Luminaire master unit equipped with controller LC-OM DALIeco and sensor LC-OM DALIeco LS/PD LI for daylight and presence-dependent control. Direct and indirect ratio dimmable separately via integrated push button.

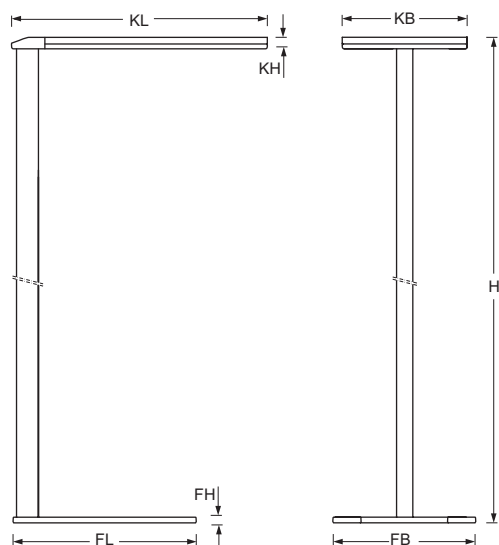
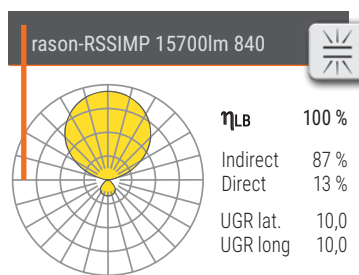
Miscellaneous

2,85m connection cable, black, with safety plug.

Accessories

Infrared remote control LC-OM Master Remote Kit for commissioning and infrared remote control LC-OM User Remote for operating the DALI M5S5 luminaire. Light control systems must be ordered separately.

Type	H	FL	FB	FH	KL	KB	KH
rason-RSSIMP	1950	490	380	18	680	330	30



Please refer to the current data and prices for LED luminaires at www.lichtwerk.de



Type	LED Specification	P _{sys} (W)	Driver	Item-Number	Colour	kg
rason-RSSIMP	LED 15700lm 840	103	ET	471 1304 175	■	18,4
	LED 15700lm 840	103	Tast dim	471 1306 575	■	18,4
	LED 15700lm 840	103	DALI M5S5	471 1308 175	■	18,4



LC-OM Master Remote



LC-OM User Remote

Accessories	Type	Details	Item-Number	Colour	kg
Light Control	LC-OM Master Remote PC Kit	Remote control IR for commissioning the DALIeco (M5S5) light control system	850 1041 100	■	0,11
	LC-OM User Remote	Remote control IR for the operation of the DALIeco (M5S5) light control system	850 1042 100	□	0,11







Contacts

HEAD OFFICE KOENIGSBERG



SALES

T +49 9525 9827 0
info@lichtwerk.de

TECHNICAL SERVICE

T +49 9525 9827 1
lichtplanung@lichtwerk.de

SALES INTERNATIONAL/ SALES MANAGER



Torsten Kießlich-Köcher

T +49 9525 89450
F +49 9525 89444
M +49 172 8682620
torsten.kiesslich@lichtwerk.de



Australia, Bulgaria, Estonia, Greece, India,
Latvia, Lithuania, Kanada, Litauen, New
Zealand, Portugal, Romania, Slovenia, Spain,
Ukraine, United Kingdom, USA, Zypern

Stefan Nestmann

T +49 9525 89438
F +49 9525 89444
M +49 172 8670054
stefan.nestmann@lichtwerk.de



Netherlands

Reinhold Pfister

T +49 9525 89451
F +49 9525 89444
M +49 172 8670050
reinhold.pfister@lichtwerk.de



Austria, Switzerland, Italy, Iceland, Serbia,
Croatia, Czech Republic, Slovakia, Hungary

Daniel Hau

T +49 9525 89657
F +49 9525 89444
M +49 160 7177734
daniel.hau@lichtwerk.de



France, Luxembourg, Belgium, Denmark,
Norway, Sweden, Finland, Poland, Middle East

GERMAN SALES FORCE

01 MECKLENBURG-VORPOMMERN

Gritt Schlemminger
M +49 151 14733968
gritt.schlemminger@lichtwerk.de



02 HAMBURG, SCHLESWIG-HOLSTEIN

Michael Brott
M +49 160 7177747
michael.brott@lichtwerk.de



03 BREMEN

Andre Altmann
M +49 160 7177746
andre.altmann@lichtwerk.de



04 HANNOVER

Ralf Reichel
M +49 160 7177738
ralf.reichel@lichtwerk.de



05 SACHSEN

Jörg Irmisch
M +49 172 8670062
joerg.irmisch@lichtwerk.de



Jürgen Bergmann
M +49 172 8670049
juergen.bergmann@lichtwerk.de



06 THÜRINGEN

Jens Schlothauer
M +49 151 14733955
jens.schlothauer@lichtwerk.de



07 HESSEN

Jörg Wenderoth
Industrievertretung
Kirchweg 1
34225 Baunatal
T +49 5601 9999040
info@wenderoth-iv.de



08 NORDRHEIN-WESTFALEN

Dominic Pauli
M +49 160 7177737
dominic.pauli@lichtwerk.de





Daniel Pangritz
M +49 160 2022163
daniel.pangritz@lichtwerk.de



Marcel Hilke
M +49 160 7177745
marcel.hilke@lichtwerk.de



09 RHEINLAND-PFALZ

Bernd Oedekoven GmbH
Industrievertretung
Rudolf-Diesel-Straße 11
56220 Urmitz
T +49 2630 96350
info@oedekovengmbh.de



10 RHEIN-MAIN

Markus Schimmer
M +49 151 14733980
markus.schimmer@lichtwerk.de



11 NORDBAYERN

Peter Gröger
M +49 172 8670045
peter.groeger@lichtwerk.de



Stephan Althaus
M +49 160 7177731
stephan.althaus@lichtwerk.de



12 BAYERN-MITTE

Bernhard Zirkelbach
M +49 172 8670047
bernhard.zirkelbach@lichtwerk.de



13 SÜDBAYERN

Holger Steinbauer
M +49 160 7177739
holger.steinbauer@lichtwerk.de



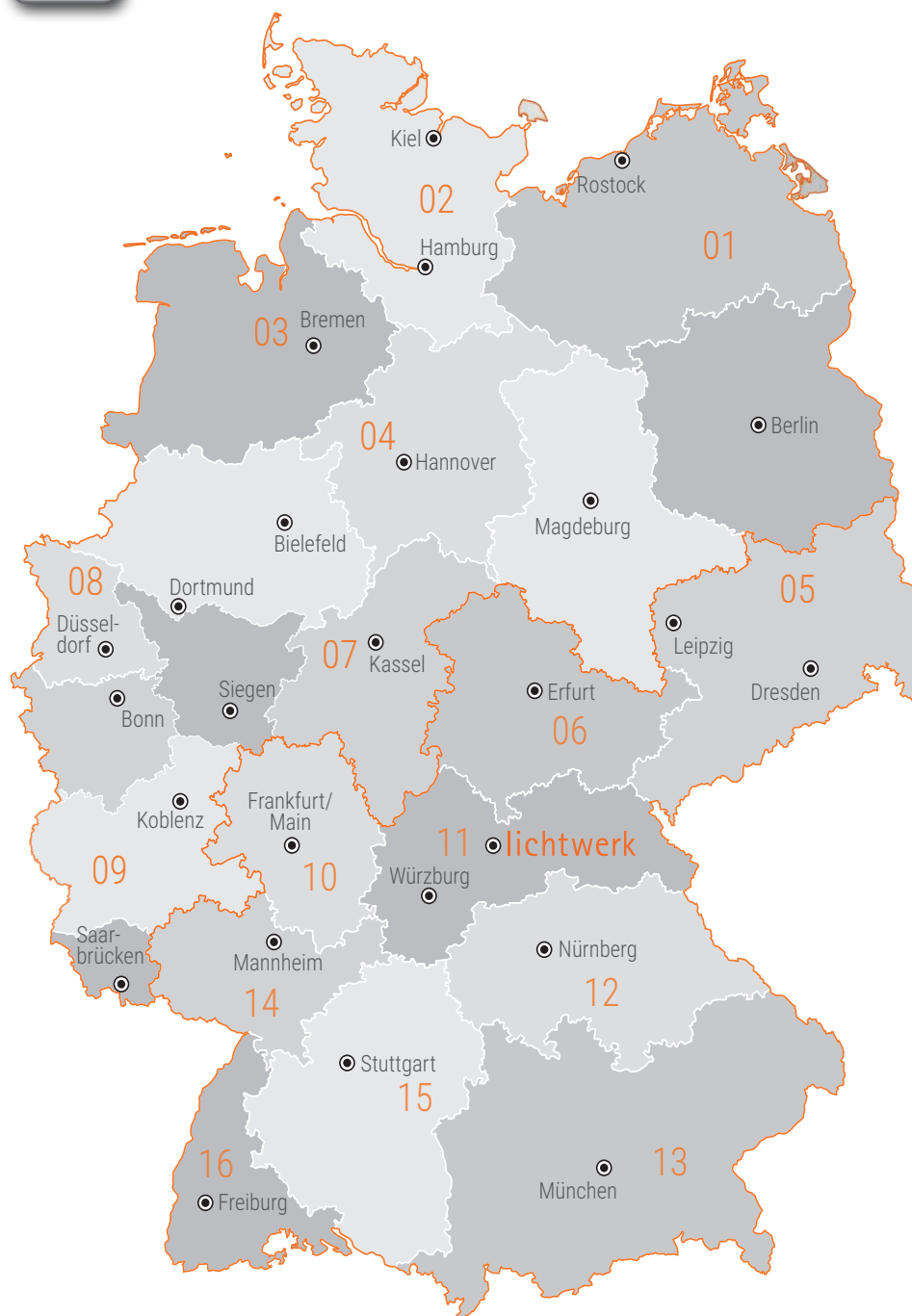
14 NORDBADEN

Steffen Leuschel
M +49 160 7177740
steffen.leuschel@lichtwerk.de



15 STUTT GART

Frank Bossert
Industrievertretung
Hofenerweg 17
71686 Remseck
T +49 711 57766960
info@bossert-weissinger.de



16 SÜDBADEN

Fred Abel GmbH
Industrievertretung
Im Ebnet 1
79238 Ehrenkirchen
T +49 7633 95010
info@fredabel.de

lichtwerk
inspired by light

lichtwerk GmbH
Hellinger Straße 3
D 97486 Königsberg







SRAM, Schweinfurt @ lichtwerk

inspired by light

www.lichtwerk.de