

lichtwerk

inspired by light

lichtwerk



SRAM, Schweinfurt @ lichtwerk



Flexible

The all-round inclusive package is our standard when it comes to defining our range of services. lichtwerk reacts flexibly to individual customer requirements.

Emotional

Light creates emotions and only when these satisfy the client's requirements does the lighting achieve the enthusiasm, which we set as our goal.

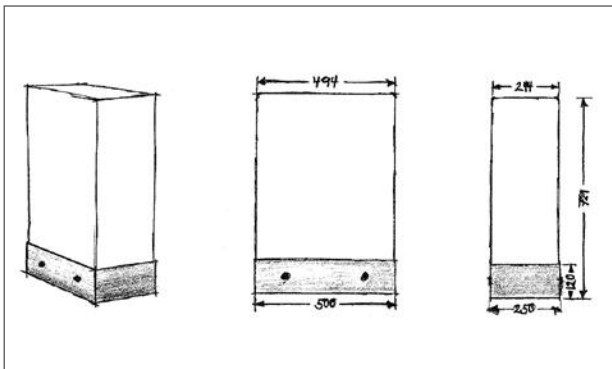
Creative

Due to the heterogeneous customer structure and changing challenges, lichtwerk is accustomed to always thinking new, innovatively and creatively.



Individual luminaires for attractive project solutions

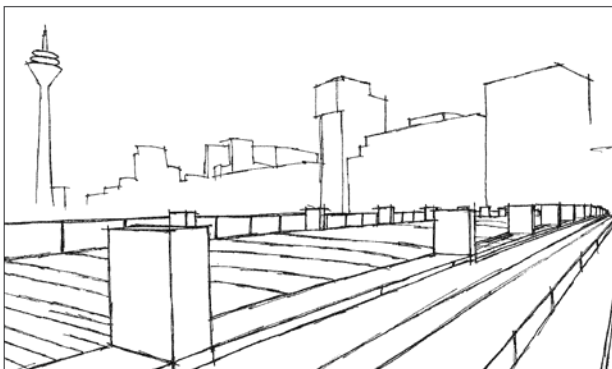
Away from standard luminaires, we develop individual project luminaires, specifically for your lighting needs. In addition to our standard colours, a wide range of RAL colours is available for our high-quality matt textured paint. No wishes remain unfulfilled in the colour selection for your luminaires.



From the idea to the product

Inspired by light - Light is the passion, which inspires us over and over again. This enthusiasm makes us creative, lets us go outside the box and exploit the freedom given to its limits.

The flexibility in thinking, which characterizes our corporate philosophy, gives us the pragmatism for which we are appreciated. The key to solving these challenging tasks are flexibility and pragmatism.



Sophisticated projects often can't be realized with standard catalogue products, therefore custom-made solutions are needed.

To meet the requirements of these projects, creativity, high technical competence and an uncompromising customer orientation in consulting, planning and production is necessary - Therefore we have a company orientation, which makes it necessary to examine our own thinking and acting over and over again.



Artisan of light

We are such an artisan of light, able to act with flexibility, sense of lighting by intuition and conceptual thinking of projects, that clearly stand out from the mass market.



Sustainability - lighting for the future



With our efficient technologies, we set a clear signal on the subject of sustainability.

While sustainability used to mean primarily environmental protection, sustainable action today also takes economic and social aspects into account. Modern lighting technology makes a valuable contribution to this:

- efficient light sources,
- optimized luminaires and
- electronic control.

Our luminaire components conserve natural resources and are largely recyclable. At the same time, modern lighting technology makes visual tasks easier and promotes people's sense of well-being, for example with Human Centric Lighting concepts (HCL). A lighting control system ensures that light only switches on in sufficient quantity when it is required.

We are there for you

CONTACT Lighting planning



It all starts with the consultation during the project planning phase. Requirements are defined, framework conditions are established, and a selection is made.

Only when everything is perfectly coordinated the planned effect will be achieved. lichtwerk deals with the subject of lighting in a very emotional way and cultivates a similar relationship with its customers.

Together with you, we develop your individual project solution, so that the lighting achieves the enthusiasm that we set ourselves as our goal.

From planning to implementation, we focus on close cooperation with the client and the executing companies on site.





Table structure

The tabular structure enables an overview of the essential features.

Type	LED Specification	Item-number	the last digit of the article number indicates the housing colour					Luminaire net weight (without packaging)
Designation of the luminaire	Luminous flux lumen (lm) Colour rendering index RA Colour temperature Kelvin (K)	543 3044 10...	→	→	→	→	→	→
Type	LED Specification	P _{sys} (W)	Driver	Item-number	Colour	Colour	Colour	kg
Sample luminaire	LED 2400lm 840 LB	20	ET	543 3044 10...	■ ...5	□ ...1	■ ...4	3
	LED 4500lm 840 LB	41	DALI	543 3144 10...	■ ...5	□ ...1	■ ...4	3

P_{sys} | Lighting system performance

Driver

- ET | Electronic Driver, non dimmable
- DALI | Electronic Driver, DALI, dimmable
- DALI DT8 | Electronic Driver, DALI, dimmable, Change of light colour
- Tast dim | dimmable via push button
- NL-B | Emergency light single battery

Colour code/colour

- | aluminium natural anodized
- | traffic white (similar RAL 9016)
- | withe-aluminium (similar RAL 9006)
- | deep black (similar RAL 9017)
- | silver grey
- | stainless steel
- | grit grey
- cr | chrome
- si | silver matt
- sig | silver gloss
- tc | translucent
- cl | clear

NEW

Please refer to the current data and prices for LED luminaires at www.lichtwerk.de



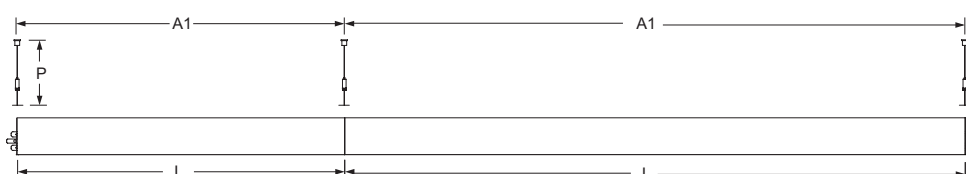
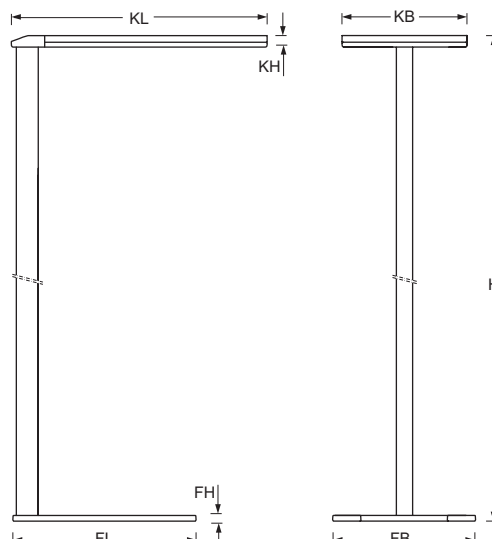
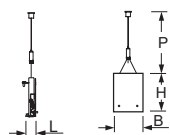
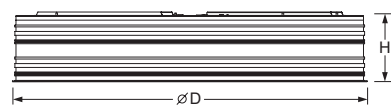
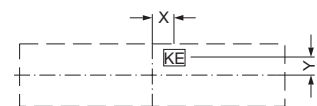
Because of the dynamics in the technical development especially in the field of LED modules and their drivers, the information in this paper can only be a snapshot of the current state and are therefore legally not binding. Please refer to our web site for current product specifications. The QR code on our product pages leads you directly to the respective product family.

EXCLUSION OF LIABILITY

Illustrations, dimensions and weights in our catalogues, price lists and quotations are non-binding. Subject to technical changes, errors and color deviations. All luminaires have been designed for 230V 50Hz mains connection and ambient conditions according to DIN EN 60598 unless otherwise stated, and are supplied without lamps unless otherwise stated.

Most of the indications with regard to certifications are presented in our catalogue in a general form. Verification with regard to products can be easily carried out on our website. We point out that the orderer recognises our delivery and payment conditions unless he/she objects in writing when sending his/her order.

Registration number: DE 40859830



Definition of measurement table variants

L | Length

□L | Length/Width for square luminaires

L2 | Additional length

B | Width

H | Height

ØD | Diameter

FL | Length of luminaire base

FB | Width of luminaire base

FD | Diameter of luminaire base

T | Depth

KE | Electrical feed in

KL | Length of luminaire head or ballast box

KB | Width of luminaire head or ballast box

KH | Height of luminaire head or ballast box

KD | Diameter of luminaire head or ballast box

A1 | Fixing distance in case of single mounting

A2 | Fixing distance between the luminaires in case of light run mounting

X | Distance from centre of the luminaire to the electrical feed in (x direction = length)

Y | Distance from centre of the luminaire to the electrical feed in (y direction = width)

SL | Length of cut out for recessed luminaires

SB | Width of cut out for recessed luminaires

SD | Diameter of cut out for recessed luminaires

e | Minimum necessary depth for luminaire mounting

ML | Modul (axis) Length

MB | Modul (axis) Width

P | Wire suspension

P min/max | Min./Max. length wire suspension

DS min/max | Min./Max. ceiling thickness in case of cut out ceilings



for ceilings with visible T-rails



for cut-out ceilings

Recessed luminaires

Surface mounted luminaires

Pendant luminaires

Phase-track and luminaires

Lighting systems

Downlights

Wall luminaires
Standing luminaires

Light furniture

Glass luminaires

Licht control

Information





DOWNLIGHTS

beo-EOSB/7x1

384

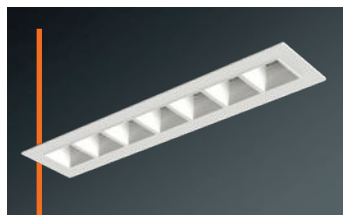


rotara-ROET/144

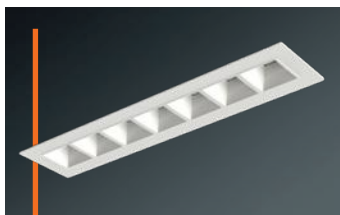
406



beo-EOSTB/7x1 386



beo-EOSLA/7x1 388



beo-EOSB/2x2 392



bota 195-BESB 396



bota 195-BESSB 398



vico-ESO 402



rotara-ROET/160 410



rotara-ROEQT/144 414



rotara-ROEQT/160 416



Downlights
from other chapters

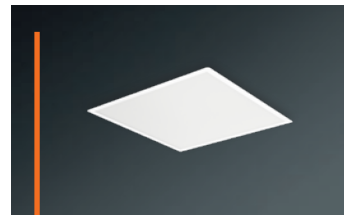


Recessed luminaires

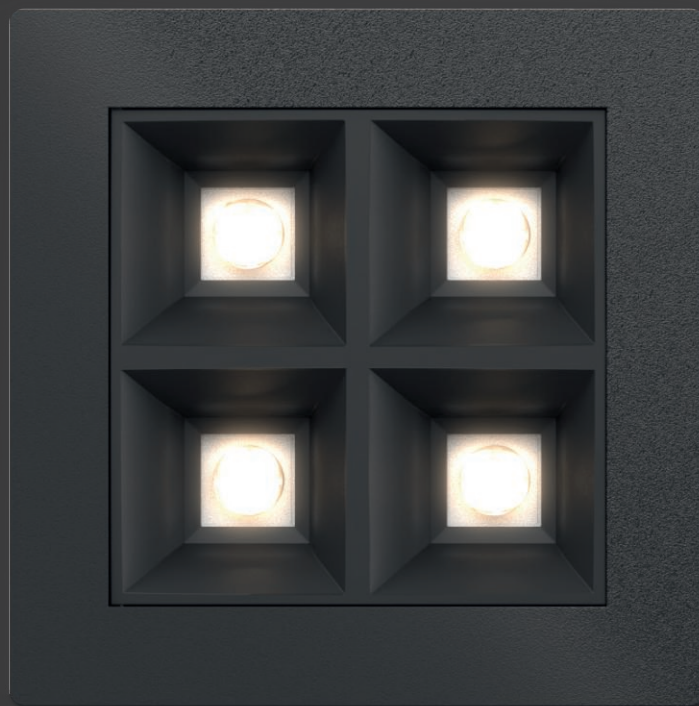
lopia R-EG 20



lopia Q-EG 28

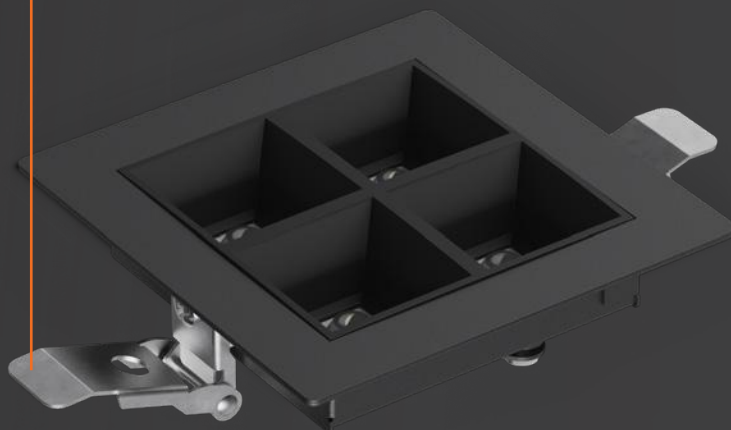


beo



Highly efficient combination
of micro-cell grid and
application-specific lens
technology.

Fixing springs for
toolless mounting.



Light as desired

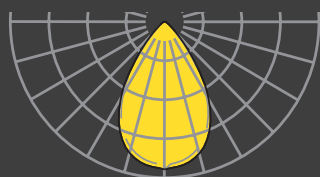
Highly efficient combination of micro-cell grid and application-specific lens technology.



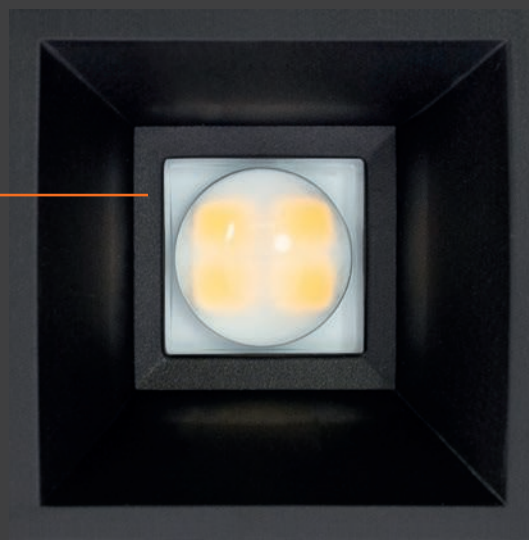
UGR19

3000
cd/m²

-EOSTB narrow-wide light distribution 50°

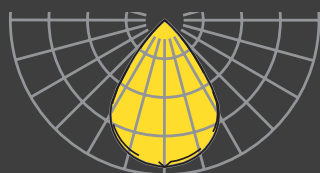


Narrow-wide light distribution
for office areas and for accentuation.

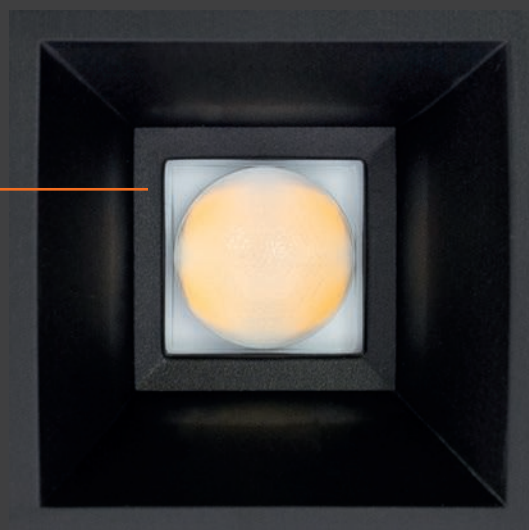


-EOSB wide light distribution

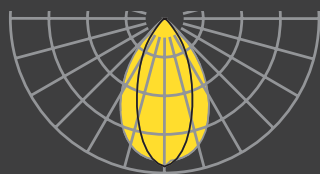
80°



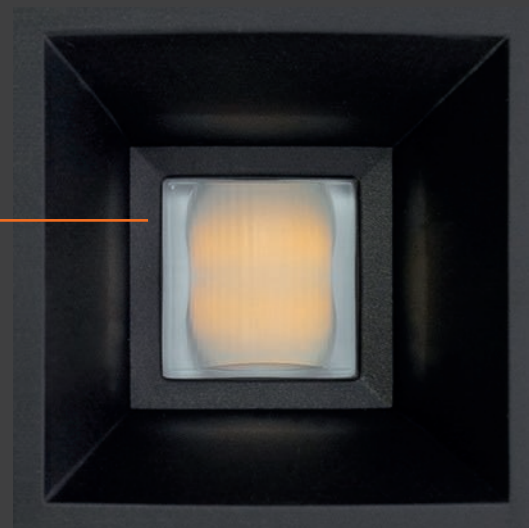
Homogeneous, wide-area basic
illumination in e.g. administration,
education, store, gastronomy.

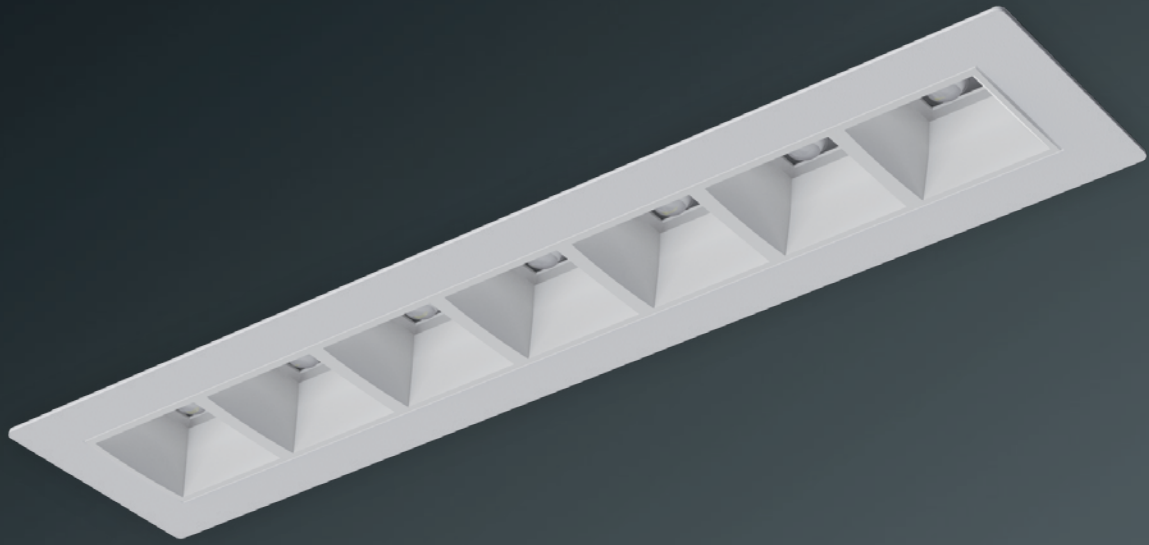


-EOSLA Linear asymmetric light distribution 40x70°



Linear asymmetric light distribution
for corridors, tables, peripheral
areas.





beo-EOSB 7x1



Housing

Rectangular sheet steel housing with minimalistic rim for cut-out ceilings. Textured paint traffic white (similar to RAL 9016) or deep black (similar to RAL 9005). Other RAL-colours according to RAL-colour palette P. 496. With fastening springs for toolless mounting.



Lighting technology -EOSB

Direct wide distribution.

Highly efficient combination of micro cell-grid in white, silver or black and wide distribution lens optics.



Micro cell-grid black
for VDU workstations according to DIN EN 12464-1, $65^\circ < 1000 \text{ cd/m}^2$.



Micro cell-grid silver
for VDU workstations according to DIN EN 12464-1, $65^\circ < 3000 \text{ cd/m}^2$.

Rated life time = L80 B10 50.000h.

Light colour: 4000K. Optional: 3000K. Other light colours on request.

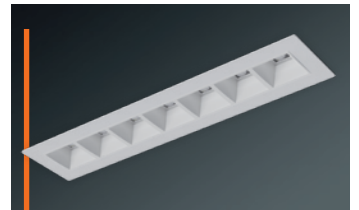


DALI-luminaires casambi ready

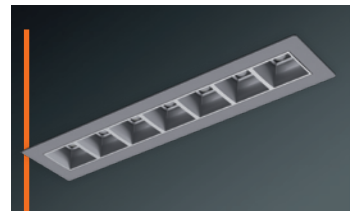
LC-LW Controller Box FLEX10M with integrated casambi module and further system components to be ordered separately P.484-487.

Miscellaneous

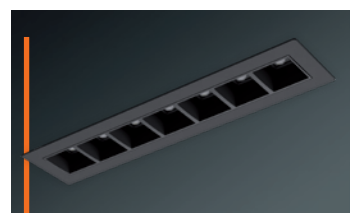
External supply unit wired with luminaire ready for operation. Electrical connection via three-pole or for dimmable luminaires five-pole terminal with plug-in contact.



□ □ traffic white | white

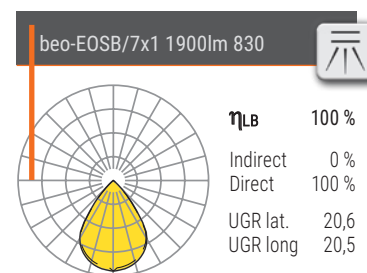
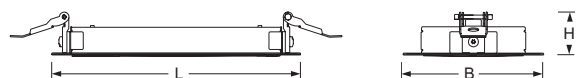


WB | SI white aluminium | silver




















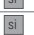








■ ■ deep black | black

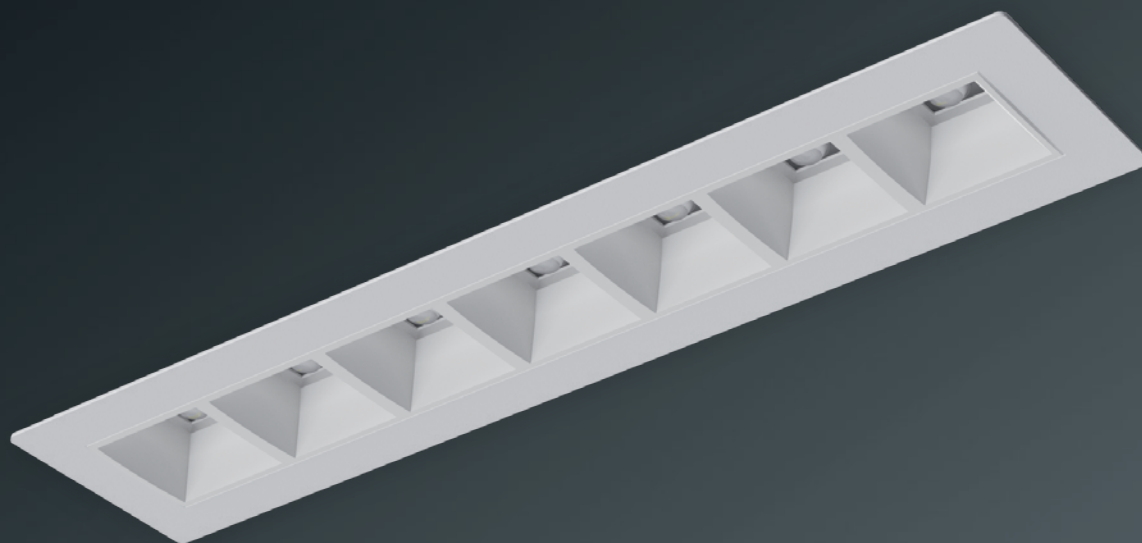
Type	L	B	H
beo-EOSB/7x1	310	71	34



Please refer to the current data and prices for LED luminaires at www.lichtwerk.de

Type	LED Specification	P _{sys} (W)	Driver	Item-Number	Colour		
beo-EOSB/7x1	LED 2200lm 840	16	ED	390 7844 100	 	on request	0,7
	LED 2200lm 840	16	DALI	390 7846 600	 	on request	0,7
	LED 2200lm 840	16	ED	390 7844 166	 	on request	0,7
	LED 2200lm 840	16	DALI	390 7846 666	 	on request	0,7
	LED 1900lm 840	16	ED	390 7844 144	 	on request	0,7
	LED 1900lm 840	16	DALI	390 7846 644	 	on request	0,7
beo-EOSB/7x1	LED 2100lm 830	16	ED	390 7834 100	 	on request	0,7
	LED 2100lm 830	16	DALI	390 7836 600	 	on request	0,7
	LED 2100lm 830	16	ED	390 7834 166	 	on request	0,7
	LED 2100lm 830	16	DALI	390 7836 666	 	on request	0,7
	LED 1800lm 830	16	ED	390 7834 144	 	on request	0,7
	LED 1800lm 830	16	DALI	390 7836 644	 	on request	0,7





beo-EOSTB 7x1



Housing

Rectangular sheet steel housing with minimalistic rim for cut-out ceilings. Textured paint traffic white (similar to RAL 9016) or deep black (similar to RAL 9005). Other RAL-colours according to RAL-colour palette P. 496. With fastening springs for toolless mounting.



Lighting technology -EOSTB

Direct narrow-wide distribution. Highly efficient combination of micro cell-grid in white, silver or black and narrow-wide distribution lens optics.



Micro cell-grid black for VDU workstations according to DIN EN 12464-1, $65^\circ < 1000 \text{ cd/m}^2$.



Micro cell-grid silver for VDU workstations according to DIN EN 12464-1, $65^\circ < 3000 \text{ cd/m}^2$.

All micro cell-grid $UGR \leq 19$ according to DIN EN 12464-1. Rated life time = L80 B10 50.000h. Light colour: 4000K. Optional: 3000K. Other light colours on request.

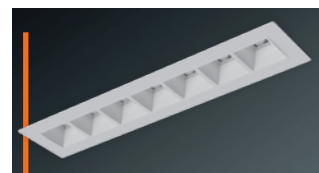


DALI-luminaires casambi ready

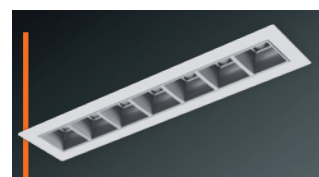
LC-LW Controller Box FLEX10M with integrated casambi module and further system components to be ordered separately P.484-487.

Miscellaneous

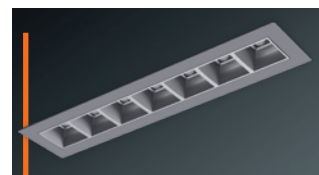
External supply unit wired with luminaire ready for operation. Electrical connection via three-pole or for dimmable luminaires five-pole terminal with plug-in contact.



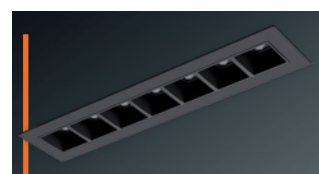
□ □ traffic white | white



□ ■ traffic white | silver

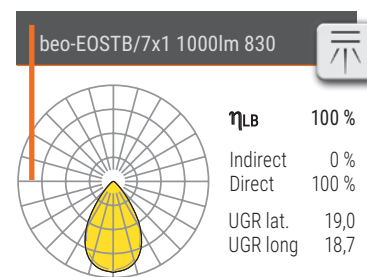
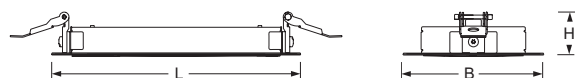


■ ■ white aluminium | silver



■ ■ deep black | black

Type	L	B	H
beo-EOSTB/7x1	310	71	34

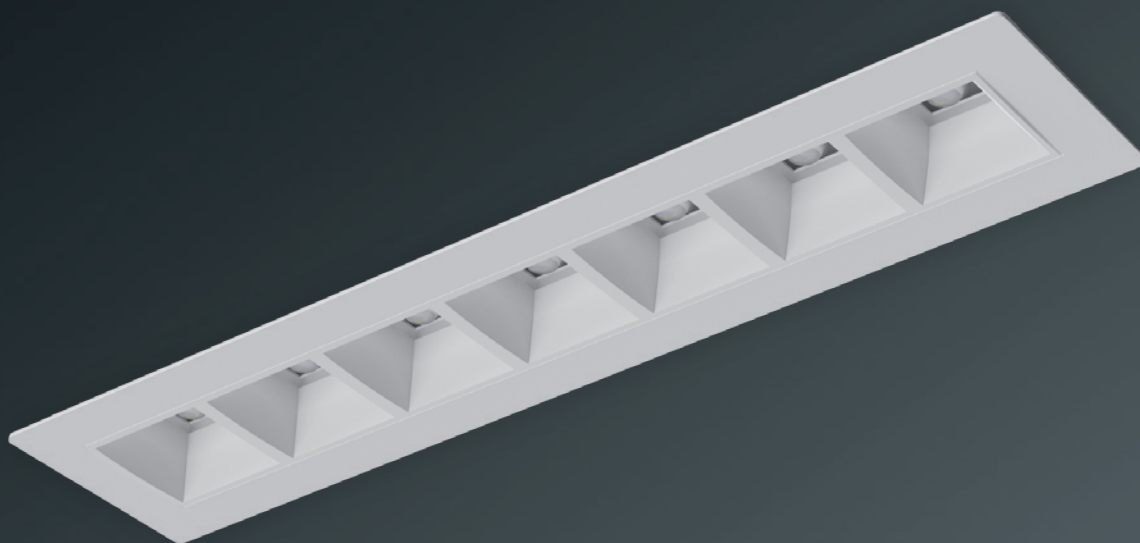


Please refer to the current data and prices for LED luminaires at www.lichtwerk.de



Type	LED Specification	P _{sys} (W)	Driver	Item-Number	Colour		
beo-EOSTB/7x1	LED 1100lm 840	7	ED	390 7544 100		on request	0,7
	LED 1100lm 840	7	DALI	390 7546 600		on request	0,7
	LED 1300lm 840	9	ED	390 7544 140		on request	0,7
	LED 1300lm 840	9	DALI	390 7546 640		on request	0,7
	LED 1300lm 840	9	ED	390 7544 166		on request	0,7
	LED 1300lm 840	9	DALI	390 7546 666		on request	0,7
	LED 1500lm 840	12	ED	390 7544 144		on request	0,7
	LED 1500lm 840	12	DALI	390 7546 644		on request	0,7
beo-EOSTB/7x1	LED 1000lm 830	7	ED	390 7534 100		on request	0,7
	LED 1000lm 830	7	DALI	390 7536 600		on request	0,7
	LED 1200lm 830	9	ED	390 7534 140		on request	0,7
	LED 1200lm 830	9	DALI	390 7536 640		on request	0,7
	LED 1200lm 830	9	ED	390 7534 166		on request	0,7
	LED 1200lm 830	9	DALI	390 7536 666		on request	0,7
	LED 1400lm 830	12	ED	390 7534 144		on request	0,7
	LED 1400lm 830	12	DALI	390 7536 644		on request	0,7





beo-EOSLA 7x1



Housing

Rectangular sheet steel housing with minimalistic rim for cut-out ceilings. Textured paint traffic white (similar to RAL 9016) or deep black (similar to RAL 9005). Other RAL-colours according to RAL-colour palette P. 496. With fastening springs for toolless mounting.



Lighting technology -EOSLA

Direct linear asymmetric light distribution. Highly efficient combination of micro cell-grid in white, silver or black and longitudinal asymmetric distribution lens optics.



Micro cell-grid black for VDU workstations according to DIN EN 12464-1, $65^\circ < 1000 \text{ cd/m}^2$.

Rated life time = L80 B10 50.000h.

Light colour: 4000K. Optional: 3000K. Other light colours on request.

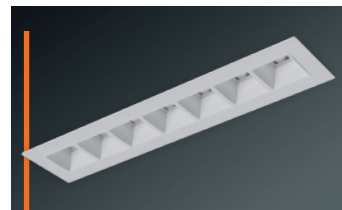


DALI-luminaires casambi ready

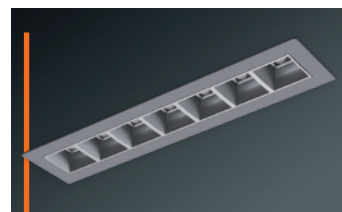
LC-LW Controller Box FLEX10M with integrated casambi module and further system components to be ordered separately P.484-487.

Miscellaneous

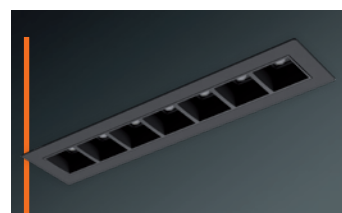
External supply unit wired with luminaire ready for operation. Electrical connection via three-pole or for dimmable luminaires five-pole terminal with plug-in contact.



□ □ traffic white | white

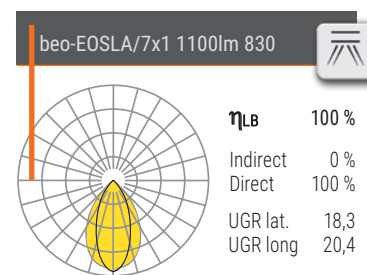
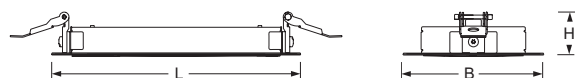


WB | SI white aluminium | silver



■ ■ deep black | black

Type	L	B	H
beo-EOSLA/7x1	310	71	34



Please refer to the current data and prices for LED luminaires at www.lichtwerk.de

Type	LED Specification	P _{sys} (W)	Driver	Item-Number	Colour		
beo-EOSLA/7x1	LED 1400lm 840	12	ED	390 7744 100		on request	0,7
	LED 1400lm 840	12	DALI	390 7746 600		on request	0,7
	LED 1500lm 840	12	ED	390 7744 166		on request	0,7
	LED 1500lm 840	12	DALI	390 7746 666		on request	0,7
	LED 1200lm 840	12	ED	390 7744 144		on request	0,7
	LED 1200lm 840	12	DALI	390 7746 644		on request	0,7
beo-EOSLA/7x1	LED 1300lm 830	12	ED	390 7734 100		on request	0,7
	LED 1300lm 830	12	DALI	390 7736 600		on request	0,7
	LED 1400lm 830	12	ED	390 7734 166		on request	0,7
	LED 1400lm 830	12	DALI	390 7736 666		on request	0,7
	LED 1100lm 830	12	ED	390 7734 144		on request	0,7
	LED 1100lm 830	12	DALI	390 7736 644		on request	0,7









beo-EOSB 2x2



Housing

Square sheet steel housing with minimalistic rim for cut-out ceilings. Textured paint traffic white (similar to RAL 9016) or deep black (similar to RAL 9005). Other RAL-colours according to RAL-colour palette P. 496. Fixing springs for toolless mounting.



Lighting technology -EOSB

Direct wide distribution.
Highly efficient combination of micro cell-grid in white, silver or black and wide distribution lens optics



Micro cell-grid black
for VDU workstations according to DIN EN 12464-1, $65^\circ < 1000 \text{ cd/m}^2$.

Rated life time = L80 B10 50.000h.
Light colour: 4000K. Optional: 3000K. Other light colours on request.



DALI-luminaires casambi ready

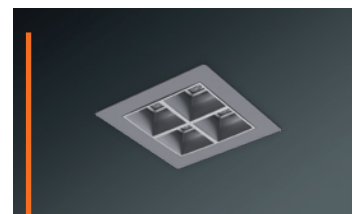
LC-LW Controller Box FLEX10M with integrated casambi module and further system components to be ordered separately P.484-487.

Miscellaneous

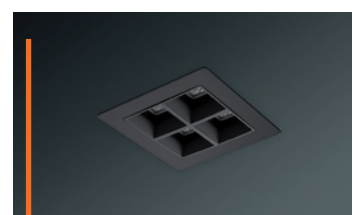
External supply unit wired with luminaire ready for operation. Electrical connection via three-pole or for dimmable luminaires five-pole terminal with plug-in contact.



□ □ traffic white | white

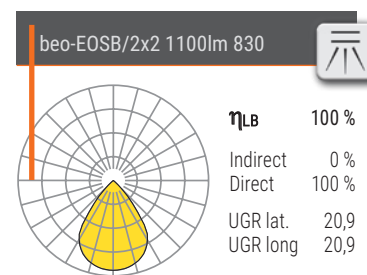


WB | SI white aluminium | silver















■ ■ deep black | black

Type	L	B	H
beo-EOSB/2x2	112	112	102



Please refer to the current data and prices for LED luminaires at www.lichtwerk.de



Type	LED Specification	P _{sys} (W)	Driver	Item-Number	Colour		
beo-EOSB/2x2	LED 1300lm 840	9	ED	390 2844 100		on request	0,4
	LED 1300lm 840	9	DALI	390 2846 600		on request	0,4
	LED 1200lm 840	9	ED	390 2844 166		on request	0,4
	LED 1200lm 840	9	DALI	390 2846 666		on request	0,4
	LED 1100lm 840	9	ED	390 2844 144		on request	0,4
	LED 1100lm 840	9	DALI	390 2846 644		on request	0,4
beo-EOSB/2x2	LED 1200lm 830	9	ED	390 2834 100		on request	0,4
	LED 1200lm 830	9	DALI	390 2836 600		on request	0,4
	LED 1200lm 830	9	ED	390 2834 166		on request	0,4
	LED 1200lm 830	9	DALI	390 2836 666		on request	0,4
	LED 1100lm 830	9	ED	390 2834 144		on request	0,4
	LED 1100lm 830	9	DALI	390 2836 644		on request	0,4









bota 195-BESB



Housing

Housing made of sheet steel with cover ring made of pressure-cast aluminium painted traffic white (similar to RAL 9016) or grit grey (similar to RAL 7032). With mounting springs for installation without tools, suitable for ceiling thickness 10-25mm.

Lighting technology -BESB

Direct wide distribution.

Light distribution using specular individually anodised reflector made of ultra-pure aluminium. Toolless reflector assembly via snap in spring system.

For VDU workstations according to DIN EN 12464-1, $65^\circ < 1000 \text{ cd/m}^2$.

Glare rating $\text{UGR} \leq 19$ according to DIN EN 12464-1 by variant 1300lm and 1900lm.

Rated life time = L80 B10 50.000h.

Light colour: 4000K. Optional: 3000K. Other light colours on request.



DALI-luminaires casambi ready

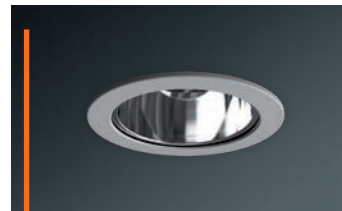
LC-LW Controller Box FLEX10M with integrated casambi module and further system components to be ordered separately P.484-487.

Miscellaneous




External supply unit wired with luminaire ready for operation. Electrical connection via three-pole or for dimmable luminaires five-pole terminal with plug-in contact.

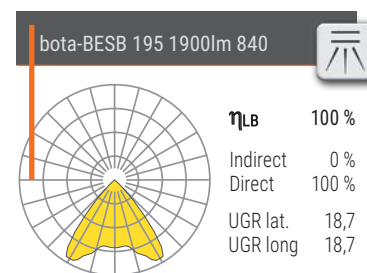
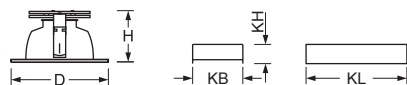


□ traffic white














■ grit grey

Type	LED Specification	Ceiling	DxH	KL	KB	KH	SD	e _{min}	DS min./max.
bota-BESB 195	LED 1300		246 x 113	167	146	48	229	165	10-25
	LED 1900		246 x 113	167	146	48	229	165	10-25
	LED 2900		246 x 117	167	146	48	229	165	10-25



Please refer to the current data and prices for LED luminaires at www.lichtwerk.de



Type	LED Specification	P _{sys} (W)	Driver	Item-Number	Colour	Colour	
bota-BESB 195	LED 1300lm 840	10	ED	879 0314 12...	 ...0	 ...5	0,7
	LED 1900lm 840	16	ED	879 0334 12...	 ...0	 ...5	0,8
	LED 1900lm 840	16	DALI	879 0336 62...	 ...0	 ...5	0,8
	LED 2900lm 840	23	ED	879 0354 12...	 ...0	 ...5	1,0
	LED 2900lm 840	23	DALI	879 0356 62...	 ...0	 ...5	1,0





bota 195-BESSB



Housing

Housing made of sheet steel with cover ring made of pressure-cast aluminium painted traffic white (similar to RAL 9016) or grit grey (similar to RAL 7032). With translucent cover made of safety glass IP54. Including mounting springs for installation without tools, suitable for ceiling thickness 10-25mm.

Lighting technology -BESSB

Direct wide distribution.

Light distribution via micro-structured, individually anodised reflector of ultra-pure aluminium. Toolless reflector assembly via snap in spring system. Rated life time = L80 B10 50.000h.

Light colour: 4000K. Optional: 3000K. Other light colours on request.



DALI-luminaires casambi ready

LC-LW Controller Box FLEX10M with integrated casambi module and further system components to be ordered separately P.484-487.

Miscellaneous




External supply unit wired with luminaire ready for operation. Electrical connection via three-pole or for dimmable luminaires five-pole terminal with plug-in contact.

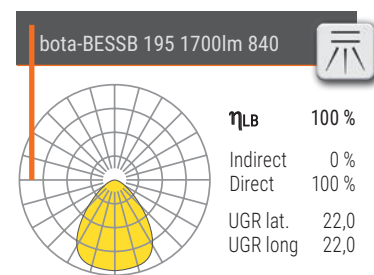
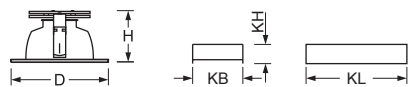


□ traffic white














■ grit grey

Type	LED Specification	Ceiling	DxH	KL	KB	KH	SD	e _{min}	DS min./max.
bota-BESSB 195	LED 1100		246 x 113	167	146	48	229	165	10-25
	LED 1700		246 x 113	167	146	48	229	165	10-25
	LED 2500		246 x 117	167	146	48	229	165	10-25



Please refer to the current data and prices for LED luminaires at www.lichtwerk.de



Type	LED Specification	P _{sys} (W)	Driver	Item-Number	Colour	Colour	
bota-BESSB 195	LED 1100lm 840	10	ED	879 1314 12...	 ...0	 ...5	0,9
	LED 1700lm 840	16	ED	879 1334 12...	 ...0	 ...5	1,0
	LED 1700lm 840	16	DALI	879 1336 62...	 ...0	 ...5	1,0
	LED 2500lm 840	23	ED	879 1354 12...	 ...0	 ...5	1,3
	LED 2500lm 840	23	DALI	879 1356 62...	 ...0	 ...5	1,3









vico-ESO



Housing

Housing made of pressure-cast aluminium, painted traffic white (similar to RAL 9016). Aluminium heat sink for effective passive cooling and recessed opal diffuser panel to break up the ceiling appearance. With fixing springs for installation without tools, suitable for ceiling thickness of 10mm-20mm.

Lighting technology -ESO

Direct wide distribution.

Light distribution via satined opal diffuser.

Rated life time = L80 B10 50.000h.

Light colour: 4000K or 3000K. Other light colours on request.






DALI-luminaries casambi ready

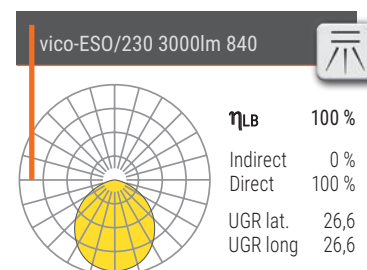
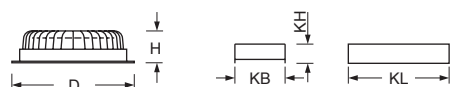
LC-LW Controller Box FLEX10M with integrated casambi module and further system components to be ordered separately P.484-487.

Miscellaneous

External driver, wired with luminaire ready for operation.


Electrical connection via 0,7m long connection line, 2x0,75mm² or for dimmable luminaires 2x0,5mm² + 2x0,75mm².


Type	Ceiling	DxH	KL	KB	KH	SD	e _{min}	DS min./max.
vico-ESO/140		140 x 45	240	30	21	95	125	10-20
vico-ESO/190		190 x 59	240	30	21	110	175	10-20
vico-ESO/230		230 x 59	240	30	21	110	215	10-20



Please refer to the current data and prices for LED luminaires at www.lichtwerk.de



Type	LED Specification	P _{sys} (W)	Driver	Item-Number	Colour	
vico-ESO/140	LED 1500lm 830	16	ED	379 1114 140	<input type="checkbox"/>	0,6
	LED 1500lm 830	16	DALI	379 1116 640	<input type="checkbox"/>	0,6
	LED 1500lm 840	16	ED	379 1104 140	<input type="checkbox"/>	0,6
	LED 1500lm 840	16	DALI	379 1106 640	<input type="checkbox"/>	0,6
vico-ESO/190	LED 2000lm 830	21	ED	379 2114 140	<input type="checkbox"/>	0,9
	LED 2000lm 830	21	DALI	379 2116 640	<input type="checkbox"/>	0,9
	LED 2000lm 840	21	ED	379 2104 140	<input type="checkbox"/>	0,9
	LED 2000lm 840	21	DALI	379 2106 640	<input type="checkbox"/>	0,9
vico-ESO/230	LED 3000lm 830	31	ED	379 3114 140	<input type="checkbox"/>	1,2
	LED 3000lm 830	31	DALI	379 3116 640	<input type="checkbox"/>	1,2
	LED 3000lm 840	31	ED	379 3104 140	<input type="checkbox"/>	1,2
	LED 3000lm 840	31	DALI	379 3106 640	<input type="checkbox"/>	1,2

Accessories	Type	Details	Item-Number	
Mounting reinforcement	vico-ESO 140	Insert for mineral fibre ceilings for vico-ESO 140; 625x625	379 1000 000	1,2
	vico-ESO/6 140	Insert for mineral fibre ceilings for vico-ESO/6 140; 600x600	379 1600 000	1,2
	vico-ESO 190	Insert for mineral fibre ceilings for vico-ESO 190; 625x625	379 2000 000	1,2
	vico-ESO/6 190	Insert for mineral fibre ceilings for vico-ESO/6 190; 600x600	379 2600 000	1,2
	vico-ESO 230	Insert for mineral fibre ceilings for vico-ESO 230; 625x625	379 3000 000	1,2
	vico-ESO/6 230	Insert for mineral fibre ceilings for vico-ESO/6 230; 600x600	379 3600 000	1,2







rotara-ROET/144



Housing

Housing made of pressure-cast aluminium, heat sink for effective passive cooling; powder-coated; round body. Reflector unit gimbal-mounted, with fixing springs for installation without tools, suitable for ceiling thickness 10mm-20mm.

Lighting technology -ROET

Direct narrow distribution.

Light distribution via matt segmented reflector made of highly-efficient MIRO-SILVER aluminium with an reflection ratio of 99,8%; beam angle 30°; clear safety glass. For VDU workstations 65° < 3000cd/m², UGR ≤ 19 according to DIN EN 12464-1. Rated life time = L80 B10 50.000h. Light colour: 4000K or 3000K. Other light colours on request.



DALI-luminaires casambi ready


LC-LW Controller Box FLEX10M with integrated casambi module and further system components to be ordered separately P.484-487.

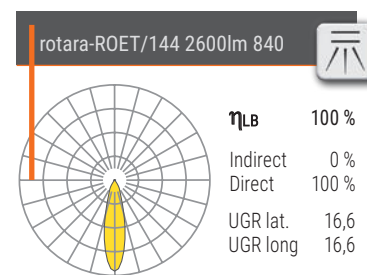
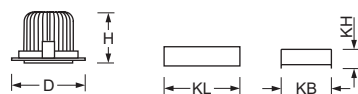
Miscellaneous

External driver, wired with luminaire ready for operation. Electrical connection via 0,7m long connection line, 2x0,75mm² or for dimmable luminaires 2x0,5mm² + 2x0,75mm².

Accessories

Replacement reflector 40°, highly specular faceted must be ordered separately.

Type	Ceiling	DxH	KL	KB	KH	e	SD	DS min./max.
ROET/144		138x94	115	53	23	140	120	10-20





Please refer to the current data and prices for LED luminaires at www.lichtwerk.de



Type	LED Specification	α	P _{sys} (W)	Driver	Item-Number	Colour	
rotara-ROET/144	LED 2500lm 830	30°	23	ED	337 0034 130	<input type="checkbox"/>	0,4
	LED 2500lm 830	30°	23	DALI	337 0036 630	<input type="checkbox"/>	0,4
	LED 2600lm 840	30°	23	ED	337 0044 130	<input type="checkbox"/>	0,4
	LED 2600lm 840	30°	23	DALI	337 0046 630	<input type="checkbox"/>	0,4



Replacement reflector 40°

Accessories	Type	Details	Item-Number	Colour	
Replacement reflector	RO/144-LED 40°	Beam angle 40°, for ROE./144	321 4014 140		0,1









rotara-ROET/160



Housing

Housing made of pressure-cast aluminium, heat sink for effective passive cooling; powder-coated; round body. Reflector unit gimbal-mounted, with fixing springs for installation without tools, suitable for ceiling thickness 10mm-20mm.

Lighting technology -ROET

Direct narrow distribution.

Light distribution via highly specular faceted reflector made of highly-efficient MIRO-SILVER aluminium with an reflection ratio of 99,8%; beam angle 30°; clear safety glass. For VDU workstations $65^\circ < 1000 \text{ cd/m}^2$, $\text{UGR} \leq 16$ according to DIN EN 12464-1. Rated life time = L80 B10 50.000h. Light colour: 4000K or 3000K. Other light colours on request.



DALI-luminaries casambi ready


LC-LW Controller Box FLEX10M with integrated casambi module and further system components to be ordered separately P.484-487.

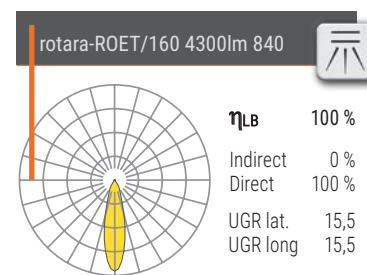
Miscellaneous

External driver, wired with luminaire ready for operation.
Electrical connection via 0,7m long connection line, $2 \times 0,75 \text{ mm}^2$ or for dimmable luminaires $2 \times 0,5 \text{ mm}^2 + 2 \times 0,75 \text{ mm}^2$.

Accessories


Replacement reflector 60°, matt segmented must be ordered separately.

Type	Ceiling	DxH	KL	KB	KH	e	SD	DS min./max.
ROET/160		182x119	170	45	35	160	170	10-20





Please refer to the current data and prices for LED luminaires at www.lichtwerk.de



Type	LED Specification	α	P _{sys} (W)	Driver	Item-Number	Colour	
rotara-ROET/160	LED 4100lm 830	30°	36	ED	337 0054 130	<input type="checkbox"/>	1,7
	LED 4100lm 830	30°	36	DALI	337 0056 630	<input type="checkbox"/>	1,7
	LED 4300lm 840	30°	36	ED	337 0064 130	<input type="checkbox"/>	1,7
	LED 4300lm 840	30°	36	DALI	337 0066 630	<input type="checkbox"/>	1,7



Replacement reflector 60°

Accessories	Type	Details	Item-Number	Colour	
Replacement reflector	RO/160-LED 60°	Beam angle 60°, for ROE./160	321 5014 140		0,1







rotara-ROEQT/144



Housing

Housing made of pressure-cast aluminium, heat sink for effective passive cooling; powder-coated; square body. Reflector unit gimbal-mounted, with fixing springs for installation without tools, suitable for ceiling thickness 10mm-20mm.

Lighting technology -ROEQT

Direct narrow distribution.

Light distribution via matt segmented reflector made of highly-efficient

MIRO-SILVER aluminium with an reflection ratio of 99,8%;

beam angle 30°; clear safety glass.

For VDU workstations $65^\circ < 3000 \text{ cd/m}^2$, $\text{UGR} \leq 19$ according to DIN EN 12464-1.

Rated life time = L80 B10 50.000h.

Light colour: 4000K or 3000K. Other light colours on request.



DALI-luminaries casambi ready

LC-LW Controller Box FLEX10M with integrated casambi module and further system components to be ordered separately P.484-487.

Miscellaneous

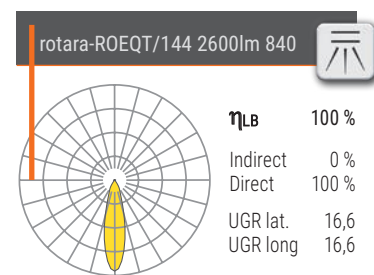
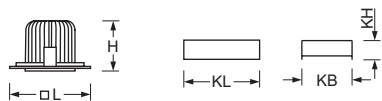
External driver, wired with luminaire ready for operation.

Electrical connection via 0,7m long connection line, $2 \times 0,75 \text{ mm}^2$ or on dimmable luminaires $2 \times 0,5 \text{ mm}^2 + 2 \times 0,75 \text{ mm}^2$.

Accessories


Replacement reflector 40°, highly specular faceted must be ordered separately.

Type	Ceiling	LxBxH	KL	KB	KH	e	SLxSB	DS min./max.
ROEQT/144		151x151x94	115	53	23	140	135x135	10-20





Please refer to the current data and prices for LED luminaires at www.lichtwerk.de



Type	LED Specification	α	P _{sys} (W)	Driver	Item-Number	Colour	
rotara-ROEQT/144	LED 2500lm 830	30°	23	ED	338 0034 130	<input type="checkbox"/>	0,4
	LED 2500lm 830	30°	23	DALI	338 0036 630	<input type="checkbox"/>	0,4
	LED 2600lm 840	30°	23	ED	338 0044 130	<input type="checkbox"/>	0,4
	LED 2600lm 840	30°	23	DALI	338 0046 630	<input type="checkbox"/>	0,4



Replacement reflector 40°

Accessories	Type	Details	Item-Number	Colour	
Replacement reflector	RO/144-LED 40°	Beam angle 40°, for ROE./144	321 4014 140		0,1





rotara-ROEQT/160



Housing

Housing made of pressure-cast aluminium, heat sink for effective passive cooling; powder-coated; square body. Reflector unit gimbal-mounted, with fixing springs for installation without tools, suitable for ceiling thickness 10mm-20mm.

Lighting technology -ROEQT

Direct narrow distribution.

Light distribution via highly specular faceted reflector made of highly-efficient MIRO-SILVER aluminium with a reflection ratio of 99,8%; beam angle 30°; clear safety glass. For VDU workstations $65^\circ < 1000 \text{ cd/m}^2$,

UGR ≤ 16 according to DIN EN 12464-1.

Rated life time = L80 B10 50.000h.

Light colour: 4000K or 3000K. Other light colours on request.



DALI-luminaires casambi ready

LC-LW Controller Box FLEX10M with integrated casambi module and further system components to be ordered separately P.484-487.


Miscellaneous

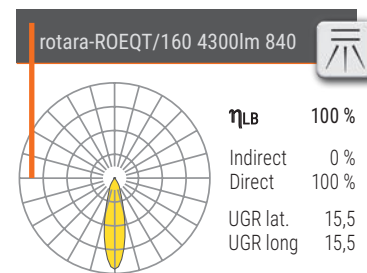
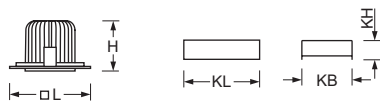
External driver, wired with luminaire ready for operation.

Electrical connection via 0,7m long connection line, $2 \times 0,75 \text{ mm}^2$ or on dimmable luminaires $2 \times 0,5 \text{ mm}^2 + 2 \times 0,75 \text{ mm}^2$.

Accessories


Replacement reflector 60°, matt segmented must be ordered separately.

Type	Ceiling	LxBxH	KL	KB	KH	e	SLxSB	DS min./max.
ROEQT/160		175x175x119	170	45	35	160	155x160	10-20



Please refer to the current data and prices for LED luminaires at www.lichtwerk.de



Type	LED Specification	α	P _{sys} (W)	Driver	Item-Number	Colour	
rotara-ROEQT/160	LED 4100lm 830	30°	36	ED	338 0054 130	<input type="checkbox"/>	1,7
	LED 4100lm 830	30°	36	DALI	338 0056 630	<input type="checkbox"/>	1,7
	LED 4300lm 840	30°	36	ED	338 0064 130	<input type="checkbox"/>	1,7
	LED 4300lm 840	30°	36	DALI	338 0066 630	<input type="checkbox"/>	1,7



Replacement reflector 60°

Accessories	Type	Details	Item-Number	Colour	
Replacement reflector	RO/160-LED 60°	Beam angle 60°, for ROE./160	321 5014 140		0,1







Contacts

HEAD OFFICE KOENIGSBERG



SALES

T +49 9525 9827 0
info@lichtwerk.de

TECHNICAL SERVICE

T +49 9525 9827 1
lichtplanung@lichtwerk.de

SALES INTERNATIONAL/ SALES MANAGER



Torsten Kießlich-Köcher

T +49 9525 89450
F +49 9525 89444
M +49 172 8682620
torsten.kiesslich@lichtwerk.de



Australia, Bulgaria, Estonia, Greece, India,
Latvia, Lithuania, Kanada, Litauen, New
Zealand, Portugal, Romania, Slovenia, Spain,
Ukraine, United Kingdom, USA, Zypern

Stefan Nestmann

T +49 9525 89438
F +49 9525 89444
M +49 172 8670054
stefan.nestmann@lichtwerk.de



Netherlands

Reinhold Pfister

T +49 9525 89451
F +49 9525 89444
M +49 172 8670050
reinhold.pfister@lichtwerk.de



Austria, Switzerland, Italy, Iceland, Serbia,
Croatia, Czech Republic, Slovakia, Hungary

Daniel Hau

T +49 9525 89657
F +49 9525 89444
M +49 160 7177734
daniel.hau@lichtwerk.de



France, Luxembourg, Belgium, Denmark,
Norway, Sweden, Finland, Poland, Middle East

GERMAN SALES FORCE

01 MECKLENBURG-VORPOMMERN

Gritt Schlemminger
M +49 151 14733968
gritt.schlemminger@lichtwerk.de



02 HAMBURG, SCHLESWIG-HOLSTEIN

Michael Brott
M +49 160 7177747
michael.brott@lichtwerk.de



03 BREMEN

Andre Altmann
M +49 160 7177746
andre.altmann@lichtwerk.de



04 HANNOVER

Ralf Reichel
M +49 160 7177738
ralf.reichel@lichtwerk.de



05 SACHSEN

Jörg Irmisch
M +49 172 8670062
joerg.irmisch@lichtwerk.de



Jürgen Bergmann
M +49 172 8670049
juergen.bergmann@lichtwerk.de



06 THÜRINGEN

Jens Schlothauer
M +49 151 14733955
jens.schlothauer@lichtwerk.de



07 HESSEN

Jörg Wenderoth
Industrievertretung
Kirchweg 1
34225 Baunatal
T +49 5601 9999040
info@wenderoth-iv.de



08 NORDRHEIN-WESTFALEN

Dominic Pauli
M +49 160 7177737
dominic.pauli@lichtwerk.de





Daniel Pangritz
M +49 160 2022163
daniel.pangritz@lichtwerk.de



Marcel Hilke
M +49 160 7177745
marcel.hilke@lichtwerk.de



09 RHEINLAND-PFALZ

Bernd Oedekoven GmbH
Industrievertretung
Rudolf-Diesel-Straße 11
56220 Urmitz
T +49 2630 96350
info@oedekovengmbh.de



10 RHEIN-MAIN

Markus Schimmer
M +49 151 14733980
markus.schimmer@lichtwerk.de



11 NORDBAYERN

Peter Gröger
M +49 172 8670045
peter.groeger@lichtwerk.de



Stephan Althaus
M +49 160 7177731
stephan.althaus@lichtwerk.de



12 BAYERN-MITTE

Bernhard Zirkelbach
M +49 172 8670047
bernhard.zirkelbach@lichtwerk.de



13 SÜDBAYERN

Holger Steinbauer
M +49 160 7177739
holger.steinbauer@lichtwerk.de



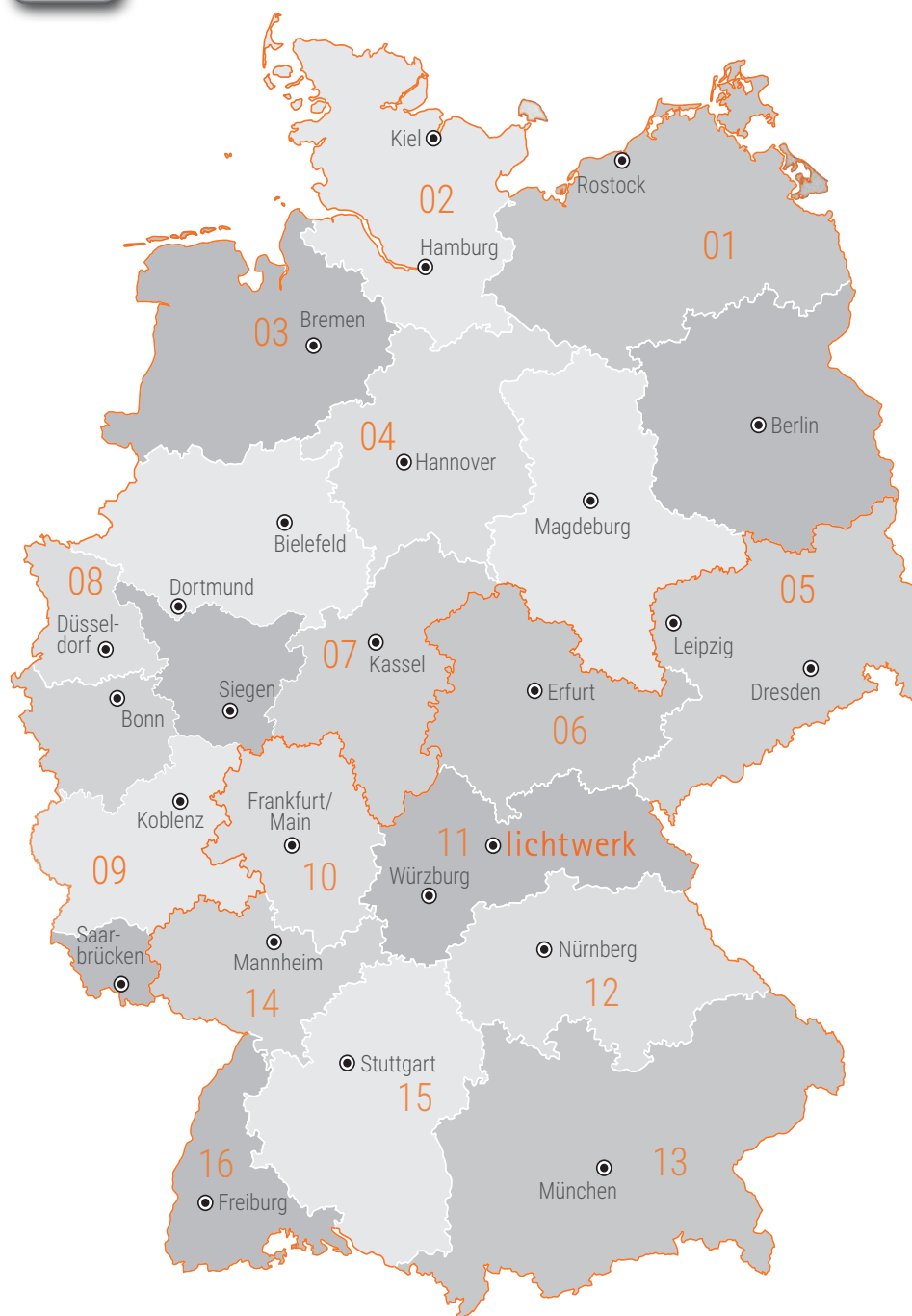
14 NORDBADEN

Steffen Leuschel
M +49 160 7177740
steffen.leuschel@lichtwerk.de



15 STUTT GART

Frank Bossert
Industrievertretung
Hofenerweg 17
71686 Remseck
T +49 711 57766960
info@bossert-weissinger.de



16 SÜDBADEN

Fred Abel GmbH
Industrievertretung
Im Ebnet 1
79238 Ehrenkirchen
T +49 7633 95010
info@fredabel.de

lichtwerk
inspired by light

lichtwerk GmbH
Hellinger Straße 3
D 97486 Königsberg







SRAM, Schweinfurt @ lichtwerk

inspired by light

www.lichtwerk.de